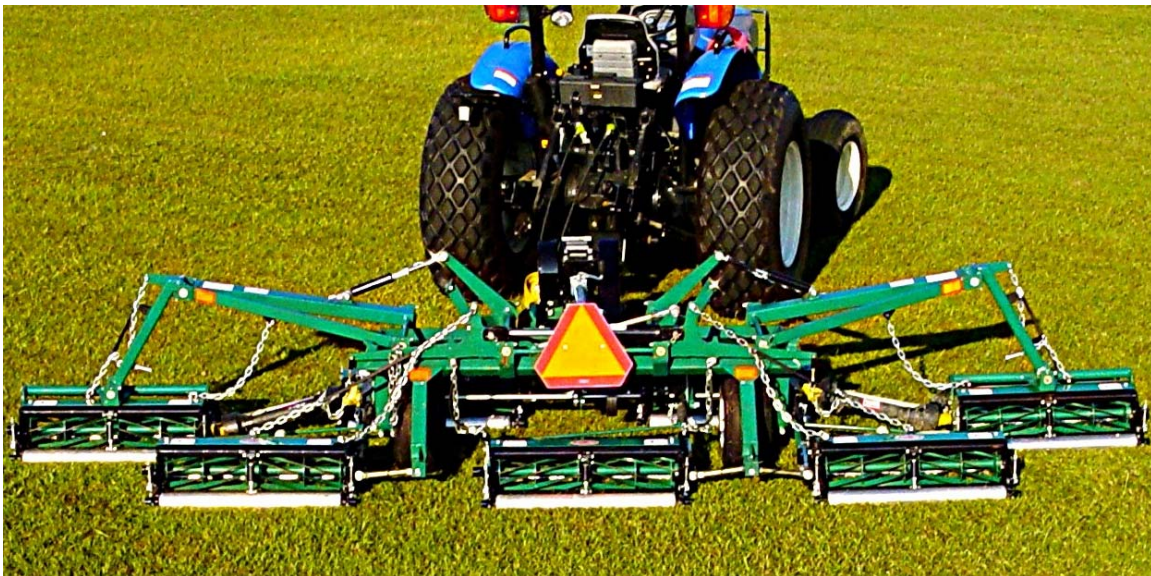




Reel Mower

TRM 5138 and TRM 7192



Parts Manual

Locke Turf

307 Highway 52E, Opp, Alabama 36467 (334) 493-1300

General Information

Mower Layout

Please note that “Left” and “Right” are determined by standing at the rear of the mower and facing forward.

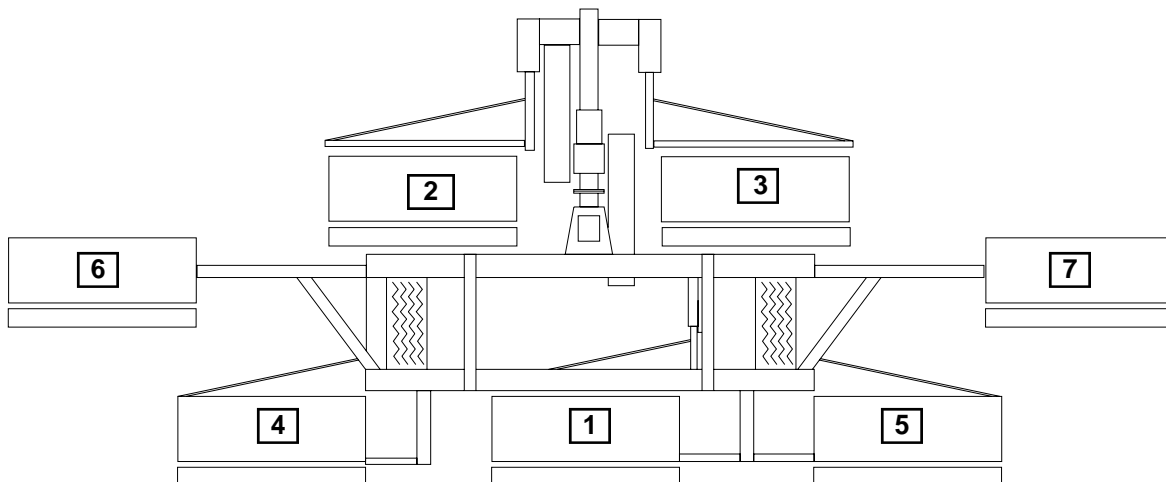
Mowing units are numbered from 1 to 7, as shown. Note that 5 reel mowers do not use units 6 & 7 or any of the required mechanisms to attach them.

Quantities

Quantities shown are for each sub-assembly rather than for the complete mower.

Illustration

This illustration is to identify the Reel by number.



Note:

HHCS - Hex Head Cap Screw

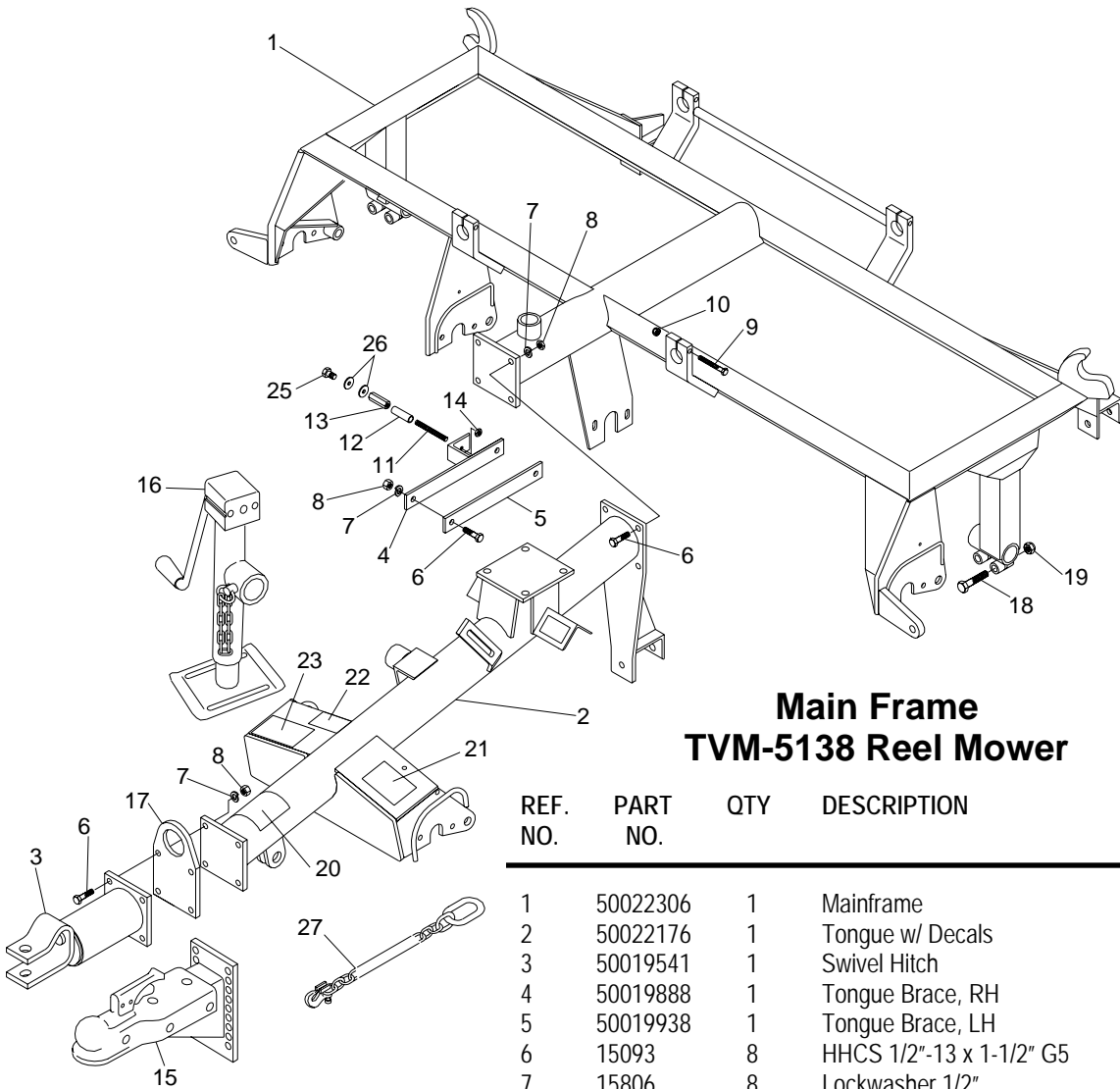
CB - Carriage Bolt

**TRM-3083
Reel Mower
Alphabetical Index**

Note: All parts that are available for repair parts are not listed in this index. Check parts listed to find unlisted parts that attach or are work in relation to listed parts.

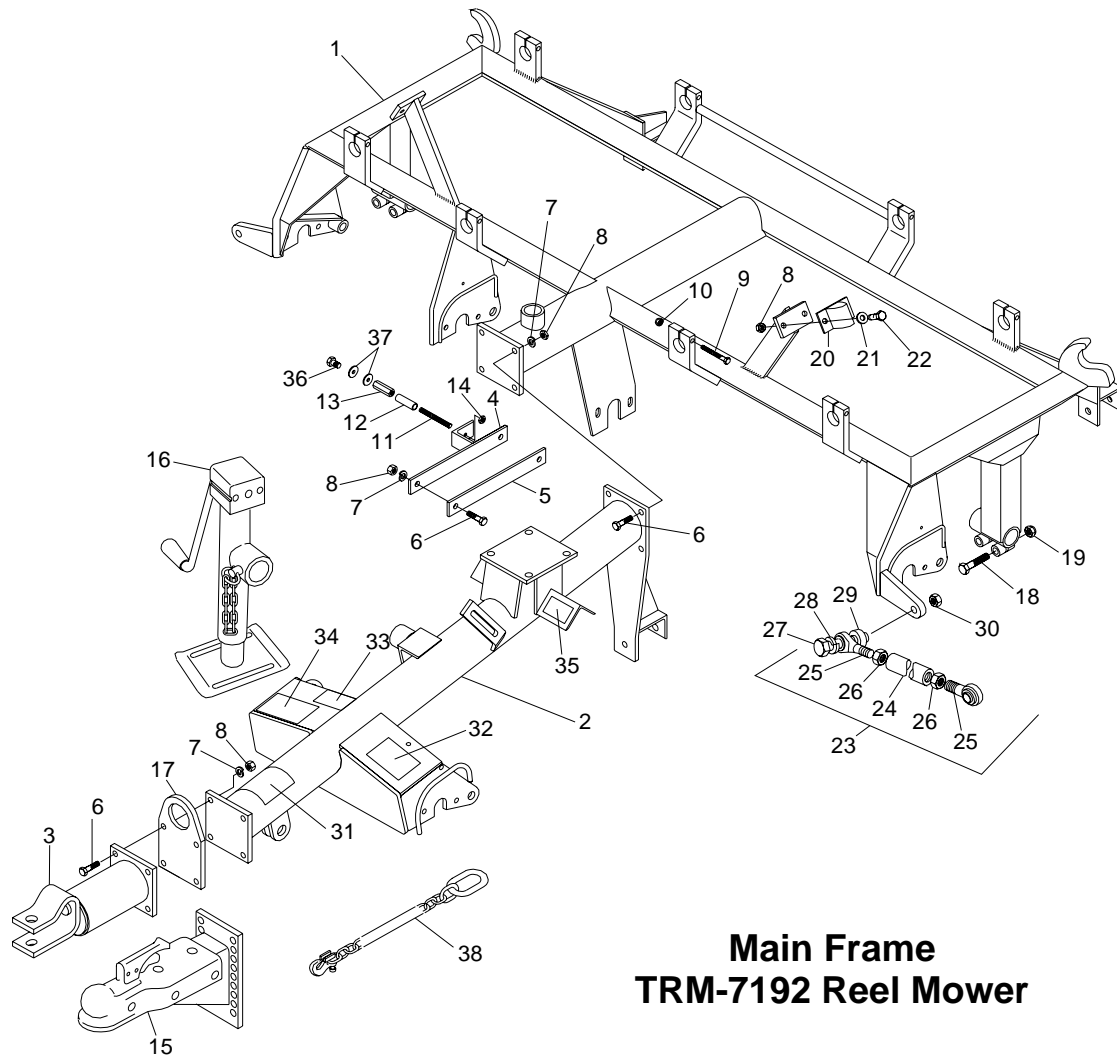
Description	Section
Mainframe & related Parts	1
Shielding	2
Drives, Gearbox, Belts, Driveshaft	3
Wheels, Axles, Hubs	4
Hydraulics	5
Mowing Units	6
Backlapper	7
Decals	8

Parts Description	Page No.
Axle Assy. - Transport	4-1
Backlapper Assy.	7-1
Bearing - Reel	6-1
Belt - V-Belt	3-1
Binder and Chain Kit	7-4
Brace - Tongue	1-1
Bracket - Roller Mount	6-5
Bushing - Roller Adapter	6-5
Chains - Lift (TRM-5138 5-Gang)	1-2
Chains - Lift (TRM-7192 7-Gang)	1-3
Compensator, Dual #1 to #5 and #2 to #3	1-3
Compensator, Single #4	1-4
Cutting Units	6-2, 6-3
Cylinder, Hydraulic	5-1
Damper Assy. (TRM-7192 7- Gang)	1-5
Decal Kit	8-1, 8-2
Driveshaft - Input CV Tractor to Implement	3-3
Equalizer (TRM-5138 5-Gang)	1-3
Equalizer (TRM-7192 7-Gang)	1-4
Fittings - Hydraulic	5-1
Gearbox & Related Parts	3-1
Hitch - Ball Type	1-1
Hitch - Swivel	1-1
Hose Holder	1-1
Hose - Hydraulic	5-1
Housing - Reel Bearing	6-1
Hub Assy. - Transport	4-1
Idler Assy. - Belt	3-6
Jackshaft Assy. - Front	3-4
Jackshaft Assy. - Rear	3-5
Jackstand	1-1
Lift Arms - (TRM-5138)	1-3
Lift Arms - (TRM-7192)	1-4
Lift, Wing	1-2
Mainframe (TRM-5138 5-Gang)	1-1
Mainframe (TRM-7192 7-Gang)	1-2
Roller Assemblies	6-5
Seal Kit - Hydraulic Cylinder	5-1
Sheaves - From Gearbox	3-1
Shields - Driveshaft & Gearbox	2-1
Shields - LH / RH Drive Guards	2-1
Shield - V-Belt Guard	2-2
Stabilizer Arm	6-4
Telescoping Arm	6-4
Tie Rod Assy. Compensator	1-3
Toe Guard	6-4
Tongue	1-1
Track Removal Brush	7-2, 7-3
Wheel Assy.	4-1



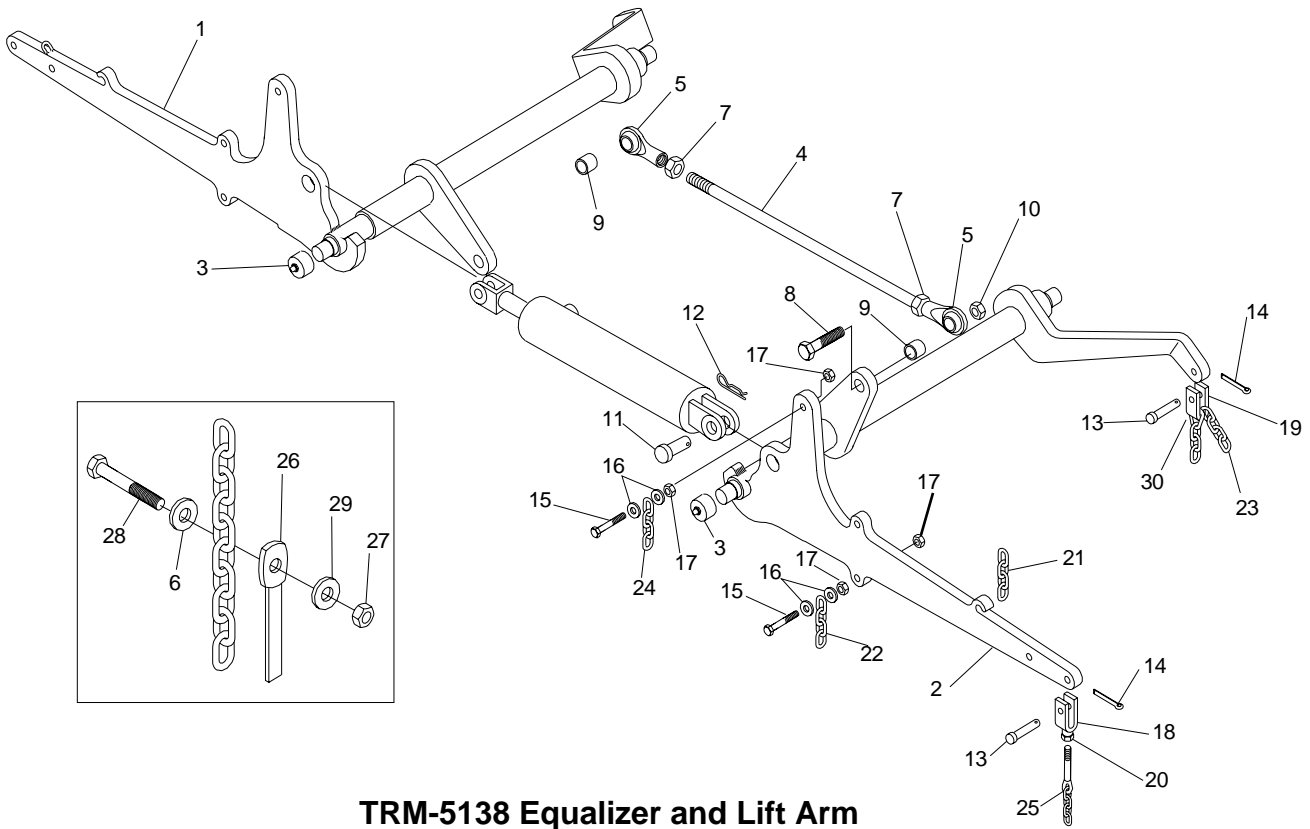
Main Frame TVM-5138 Reel Mower

REF. NO.	PART NO.	QTY	DESCRIPTION
1	50022306	1	Mainframe
2	50022176	1	Tongue w/ Decals
3	50019541	1	Swivel Hitch
4	50019888	1	Tongue Brace, RH
5	50019938	1	Tongue Brace, LH
6	15093	8	HHCS 1/2"-13 x 1-1/2" G5
7	15806	8	Lockwasher 1/2"
8	8151600	8	Hex Nut 1/2"
9	19055	4	HHCS 3/8"-16 x 3" G5
10	44601	3	Hex Nut - Nylock 3/8"-16
11	50019944	1	Stud, Belt Guard
12	50022437	1	Spacer, RH Shield
13	44600	1	Nut, Coupling 3/8"-16 x 1-3/4" Lg
14	10151200	1	Jam Nut 3/8"-16
15	50019542	1	Ball Hitch Assembly
16	50022109	1	Jackstand Assembly
17	50019877	1	Hose Holder Assembly
18	19065	4	HHCS 1/2"-13 x 2-1/2" G5
19	44539	4	Hex Nut - Nylock 1/2"-13
20	50022073	1	Warning Decal
21	50022081	1	Notice Decal
22	50022067	1	Flag Decal
23	50022070	1	Warning Decal
24	50022066	2	Danger Decal
25	19100	1	HHCS 3/8"-16 x 3/4"
26	15915	2	Flatwasher 3/8"
27	91091	1	Safety Tow Chain



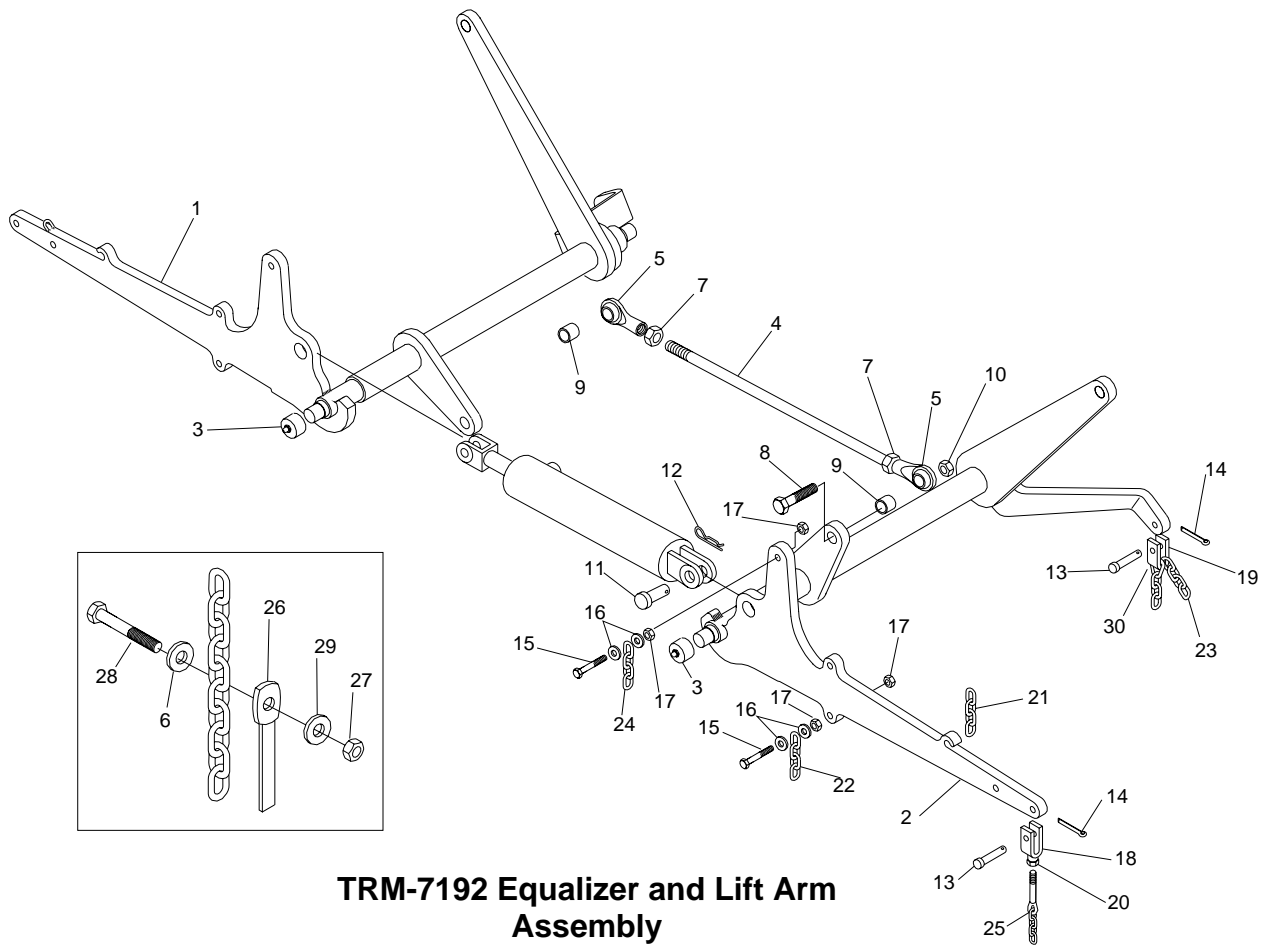
Main Frame TRM-7192 Reel Mower

REF. NO.	PART NO.	QTY	DESCRIPTION	REF. NO.	PART NO.	QTY	DESCRIPTION
1	50022062	1	Mainframe	21	15916	4	Flatwasher 1/2"
2	50022176	1	Tongue w/ Decals	22	20054	4	HHCS 1/2"-13 x 1" G5
3	50019541	1	Swivel Hitch	23	50019871	2	Outer Tie Rod Assembly
4	50019888	1	Tongue Brace, RH	24	50019869	1	Outer Tie Rod Tube
5	50019938	1	Tongue Brace, LH	25	50019870	1	Rod End RH 5/8"-18M x 5/8"B
6	15093	8	HHCS 1/2"-13 x 1-1/2" G5	50019868	1	Rod End LH 5/8"-18M x 5/8"B	
7	15806	8	Lockwasher 1/2"	26	44743	2	Hex Nut 5/8" RH
8	8151600	12	Hex Nut 1/2"	44710	2	Hex Nut 5/8" LH	
9	19055	4	HHCS 3/8"-16 x 3" G5	27	44008	2	HHCS 5/8"-11 x 2-1/2" G5
10	44601	3	Hex Nut 1/2"	28	19486	1	Lockwasher 5/8"
11	50019944	1	Stud, Belt Guard	29	50019875	1	Tie Rod Spacer
12	50022437	1	Spacer, RH Shield	30	15563	1	Hex Nut 5/8"-11 G5
13	44600	1	Nut, Coupling 3/8"-16 x 1-3/4"	31	50022073	1	Caution Decal
14	10151200	1	Jam Nut 3/8"-16	32	50022081	1	Notice Decal
15	50019542	1	Ball Hitch Assembly	33	50022067	1	Flag Decal
16	50022109	1	Jackstand Assembly	34	50022070	1	Warning Decal
17	50019877	1	Hose Holder Assembly	35	50022066	2	Danger Decal
18	19065	4	HHCS 1/2"-13 x 2-1/2" G5	36	19100	1	HHCS 3/8"-16 x 3/4"
19	44539	4	Hex Nut, Nylock 1/2"-13	37	15915	2	Flatwasher 3/8"
20	50022005	2	Rubber Bumper	38	91091	1	Safety Tow Chain



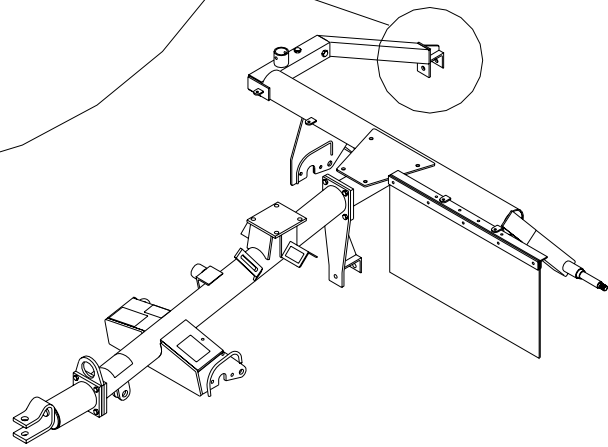
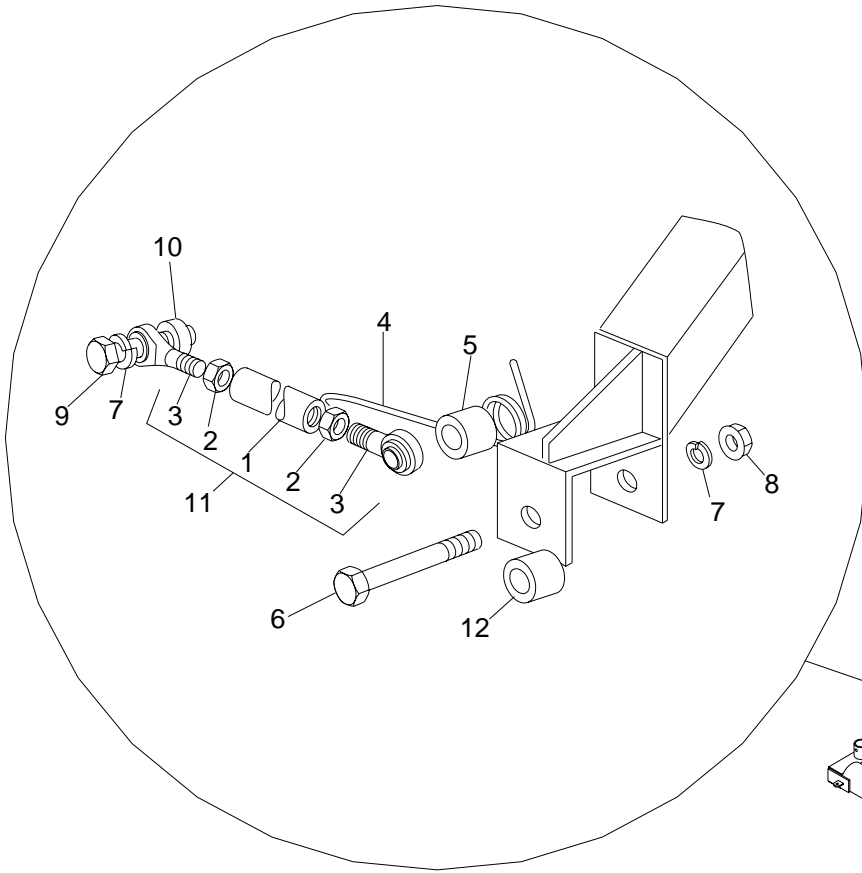
TRM-5138 Equalizer and Lift Arm Assembly

REF. NO.	PART NO.	QTY	DESCRIPTION	REF. NO.	PART NO.	QTY	DESCRIPTION
1	50022328	1	Lift Arm (5 Gang) RH	17	10151200	6	Jam Nut 3/8"-16
2	50022329	1	Lift Arm (5 Gang) LH	18	50019916	2	Clevis Yoke w/ Hole
3	50019948	4	Bearing Cup Assembly	19	50019915	2	Clevis Yoke
4	50019873	1	Synchronizing Rod	20	8111200	2	Hex Nut 3/8"-16
5	50019872	2	Rod End RH 3/4"-16 3/4"B	21	50019952	2	Transport Lock Chain
6	44567	4	Washer 1/4"	22	50019949	1	Lift Chain #1
7	44606	2	Jam Nut 3/4"-16	23	50019893	2	Lift Chain #2 & #3 Outer
8	19021	2	HHCS 3/4"-10 x 3"	24	50019950	2	Lift Chain #4 & #5 Inner
9	50019914	2	Spacer	25	50019895	2	Lift Chain #4 & #5 Outer
10	19517	2	Hex Nut 3/4"-10	26	50022099	4	Polly Strap 9"
11	50019659	2	Clevis Pin 1" x 2-3/4"	27	50022100	2	Polly Strap 15"
12		2	Presto Pin 3/16"	28	44566	4	Hex Nut, Nylock 1/4"-20
13	44716	4	Clevis Pin 3/8" x 1-1/2"	29	44579	4	HHCS 1/4"-20 x 1-1/2"
14	15668	4	Cotter Pin 5/32" x 1"	30	44567	4	Flatwasher 1/4"
15	44174	4	HHCS 3/8"-16 x 1-3/4"		50019939	2	Lift Chain #2 & #3 Inner
16	15915	8	Flatwasher 3/8"				



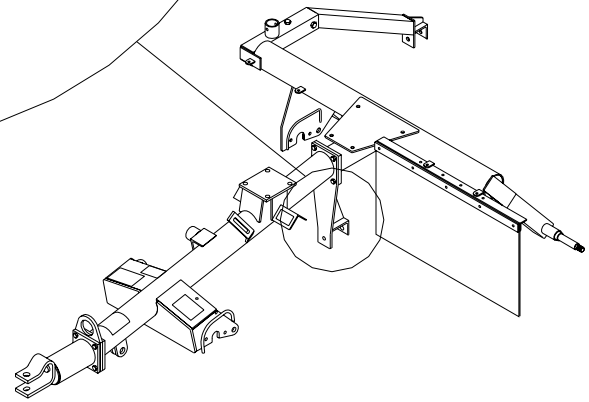
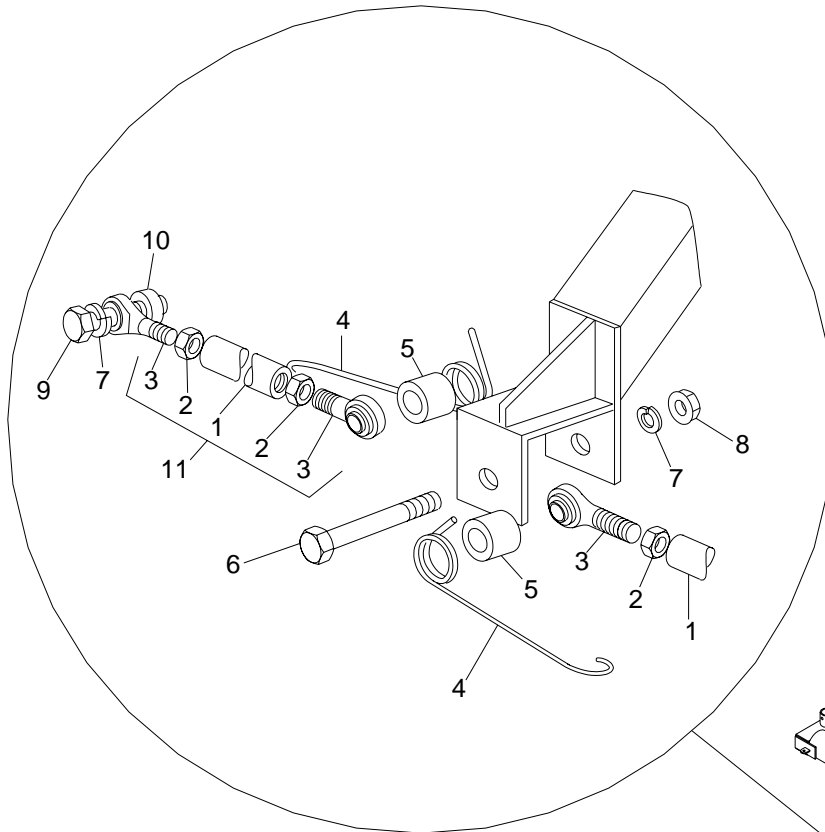
TRM-7192 Equalizer and Lift Arm Assembly

REF. NO.	PART NO.	QTY	DESCRIPTION	REF. NO.	PART NO.	QTY	DESCRIPTION
1	50019909	1	Lift Arm (7 Gang) RH	17	10151200	6	Jam Nut 3/8"-16
2	50019906	1	Lift Arm (7 Gang) LH	18	50019916	2	Clevis Yoke w/ Hole
3	50019948	4	Bearing Cup Assembly	19	50019915	2	Clevis Yoke
4	50019873	1	Synchronizing Rod	20	8111200	2	Hex Nut 3/8"-16
5	50019872	2	Rod End RH 3/4"-16 3/4"B	21	50019952	2	Transport Lock Chain
6	44567	4	Washer 1/4"	22	50019949	1	Lift Chain #1
7	44606	2	Jam Nut 3/4"-16	23	50019893	2	Lift Chain #2 & #3 Outer
8	19021	2	HHCS 3/4"-10 x 3"	24	50019950	2	Lift Chain #4 & #5 Inner
9	50019914	2	Spacer	25	50019895	2	Lift Chain #4 & #5 Outer
10	19517	2	Hex Nut 3/4"-10	26	50022099	4	Polly Strap 9"
11	50019659	2	Clevis Pin 1" x 2-3/4"	27	50022100	2	Polly Strap 15"
12		2	Presto Pin 3/16"	28	44566	4	Hex Nut, Nylock 1/4"-20
13	44716	4	Clevis Pin 3/8" x 1-1/2"	29	44579	4	HHCS 1/4"-20 x 1-1/2"
14	15668	4	Cotter Pin 5/32" x 1"	30	44567	4	Flatwasher 1/4"
15	44174	4	HHCS 3/8"-16 x 1-3/4"		50019939	2	Lift Chain #2 & #3 Inner
16	15915	8	Flatwasher 3/8"				



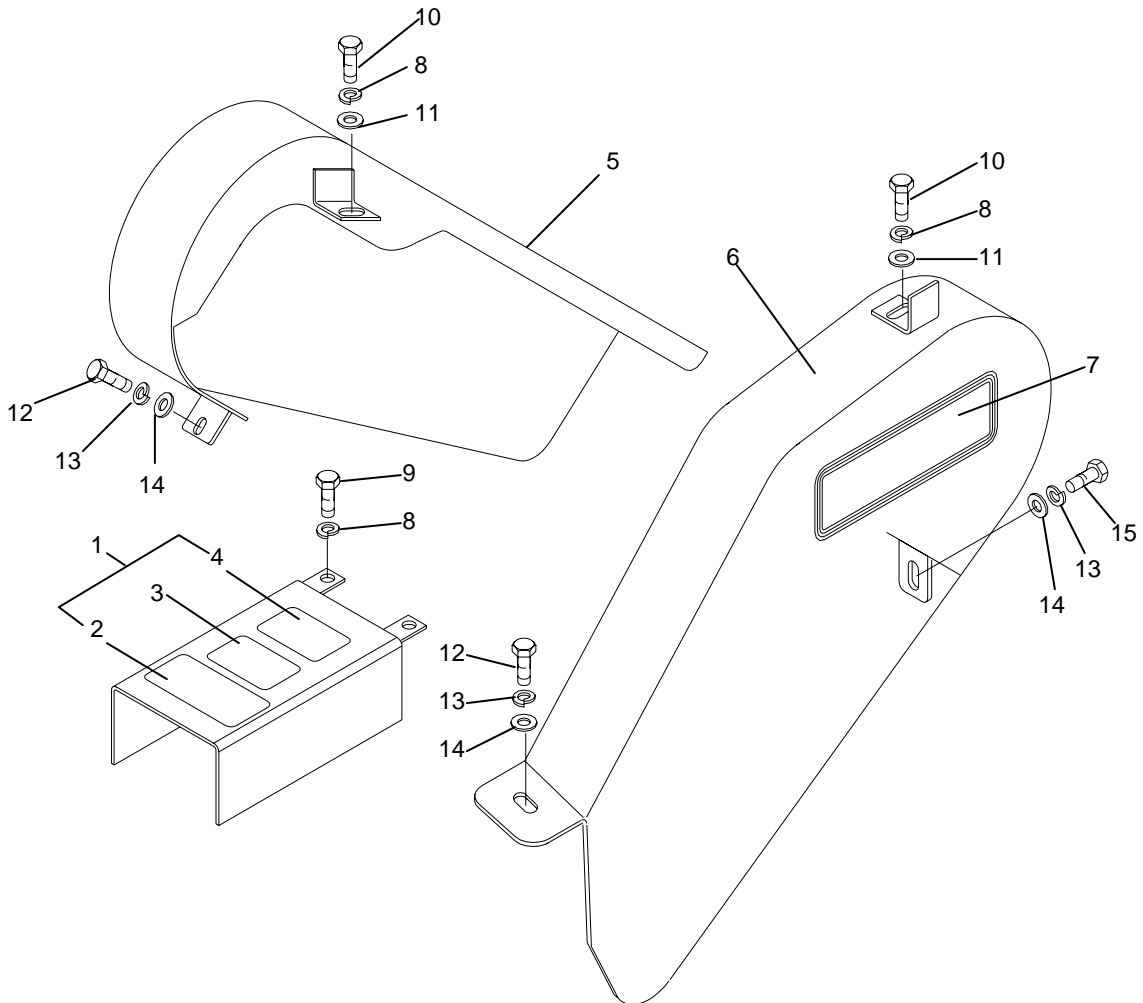
**Single Compensator and Tie Rod Assemblies
Reel Unit No. 4**

REF. NO.	PART NO.	QTY	DESCRIPTION
1	50019910	1	Tie Rod
2	44743	1	Hex Nut 5/8"-18 UNF RH Thd
	44710	1	Hex Nut 5/8"-18 UNF LH Thd
3	50019870	1	Rod End 5/8" Bore w/Rh Thread 5/8"-18
	50019868	1	Rod End 5/8" Bore w/LH Thread 5/8"-18
4	50022083	1	Compensator Spring 1/4"
5	50019940	1	Spacer 7/8" Thick
6	44168	1	HHCS 5/8"-11 x 3-3/4" Gr.5
7	19486	1	Lockwasher 5/8"
8	15563	1	Hex Nut 5/8"-11
9	20947	1	HHCS 5/8"-11 x 2" Gr.5
10	50019875	1	Tie Rod Spacer
11	50019911	1	Tie Rod Assy.
12	50019941	1	Spacer 5/8" Thick



**Dual Compensator and Tie Rod
Assemblies
Reel Units 1 to 5 & 2 to 3**

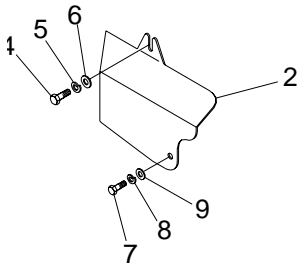
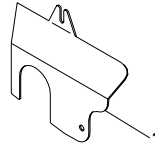
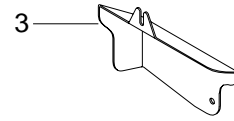
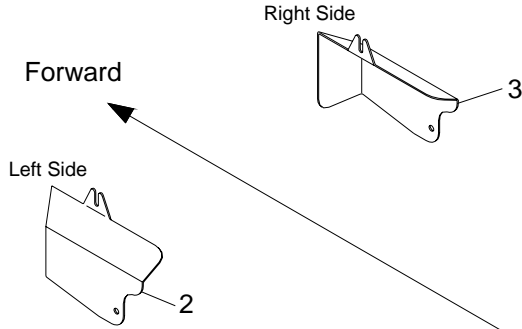
REF. NO.	PART NO.	QTY	DESCRIPTION
1	50019910	1	Tie Rod
2	44743	1	Hex Nut 5/8"-18 UNF RH Thd
	44710	1	Hex Nut 5/8"-18 UNF LH Thd
3	50019870	1	Rod End 5/8" Bore w/Rh Thread 5/8"-18
	50019868	1	Rod End 5/8" Bore w/LH Thread 5/8"-18
4	50022083	1	Compensator Spring 1/4"
5	50019940	1	Spacer 7/8" Thick
6	44625	1	HHCS 5/8"-11 x 4-3/4" Gr.5
7	19486	1	Lockwasher 5/8"
8	15563	1	Hex Nut 5/8"-11
9	20947	1	HHCS 5/8"-11 x 2" Gr.5
10	50019875	1	Tie Rod Spacer
11	50019911	1	Tie Rod Assy.



Primary Guards

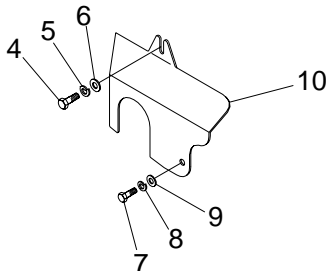
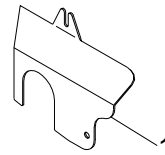
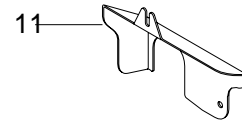
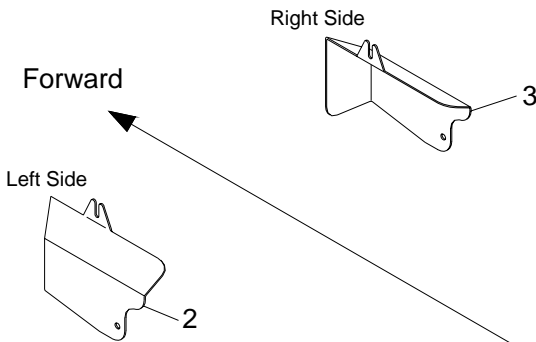
REF. NO.	PART NO.	QTY	DESCRIPTION
1	50022175	1	Guard w/Decals - Driveshaft
2	50022072	1	Danger Decal
3	50022074	1	Decal - Notice to Owner
4	50022065	1	Danger Decal (Spanish)
5	50019968	1	R.H. Drive Guard
6	50019971	1	L.H. Drive Guard
7	50100034	2	Model Decal TVM-5130
	50100033	2	Model Decal TVM-3077
8	15806	4	Lockwasher 1/2"
9	44588	2	HHCS 1/2"-13 x 3/4" Gr.5
10	20054	2	HHCS 1/2"-13 x 1" Gr.5
11	15829	2	Flatwasher 1/2"
12	20035	2	HHCS 3/8"-16 x 1/2"
13	15812	3	Lockwasher 3/8"
14	15830	3	Flatwasher 3/8"
15	1161006	1	HHCS 5/16"-18 x 3/4"

V-Belt Guards TRM-5138

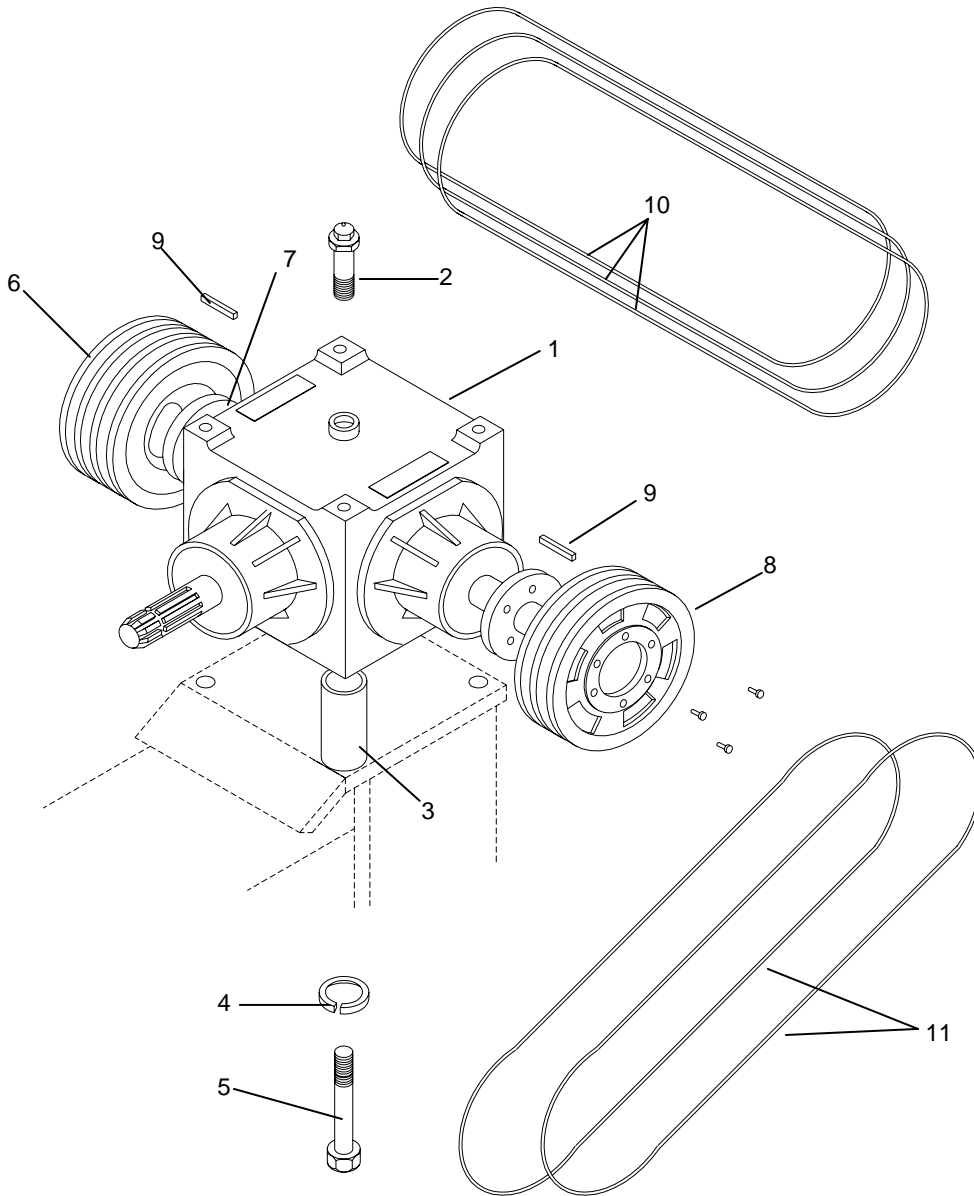


REF. NO.	PART NO.	QTY	DESCRIPTION
1	50019931	1	Guard, Center Rear #1
2	50019933	1	Guard, LH Outside #2
3	50019934	1	Guard, RH Outside #3
4	1161006	5	HHCS 5/16"-18 x 3/4"
5	15808	5	Lockwasher 5/16"
6	15907	5	Flatwasher 5/16"
7	20009	5	HHCS 1/4"-20 x 1/2"
8	15905	5	Lockwasher 1/4"
9	44567	5	Flatwasher 1/4"

V-Belt Guards TRM-7192

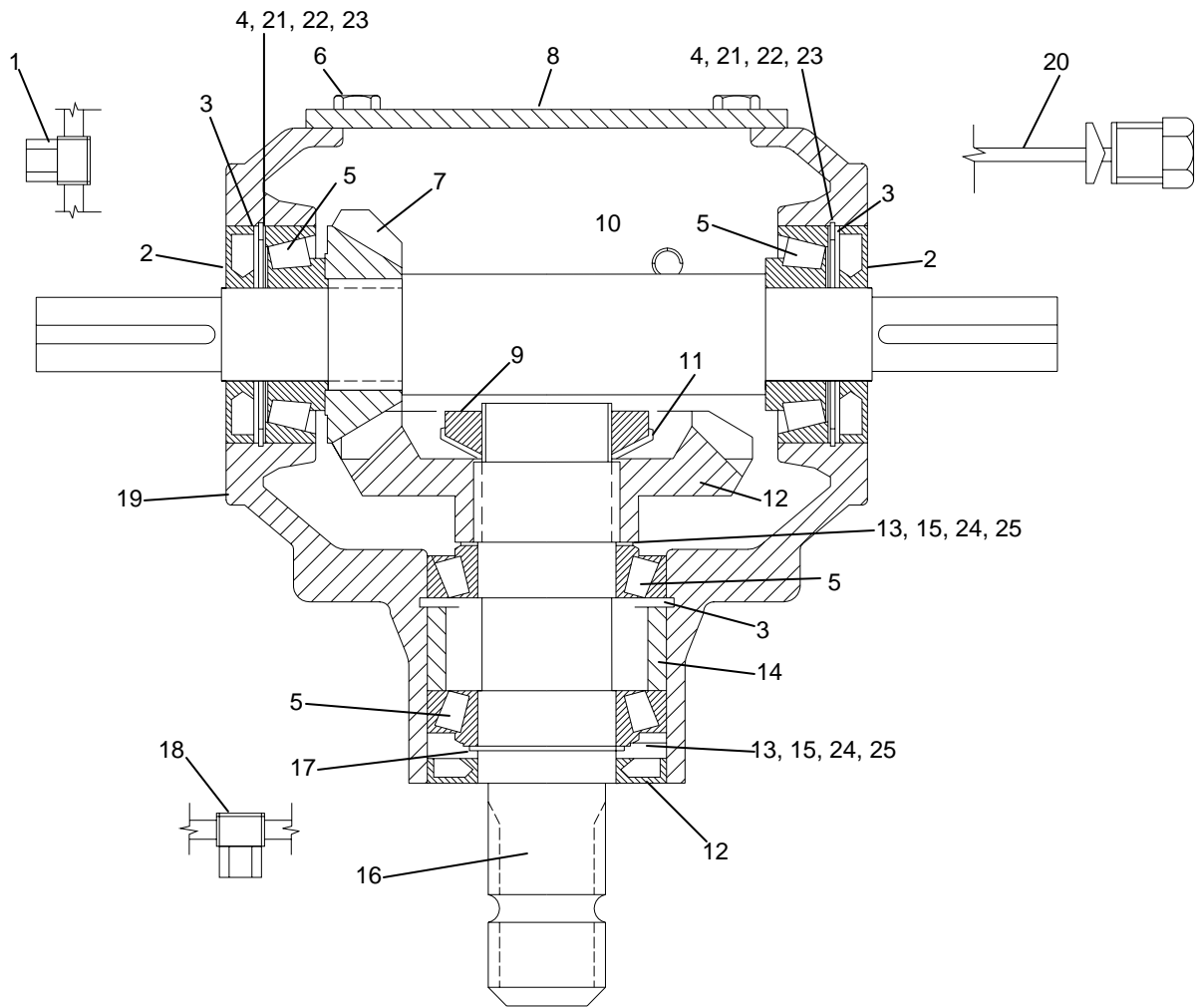


REF. NO.	PART NO.	QTY	DESCRIPTION
1	50019931	1	Guard, Center Rear #1
2	50019933	1	Guard, LH Outside #2
3	50019934	1	Guard, RH Outside #3
4	1161006	5	HHCS 5/16"-18 x 3/4"
5	15808	5	Lockwasher 5/16"
6	15907	5	Flatwasher 5/16"
7	20009	5	HHCS 1/4"-20 x 1/2"
8	15905	5	Lockwasher 1/4"
9	44567	5	Flatwasher 1/4"
10	50019936	1	Guard, LH Outside #4
11	50019937	1	Guard, RH Outside #5



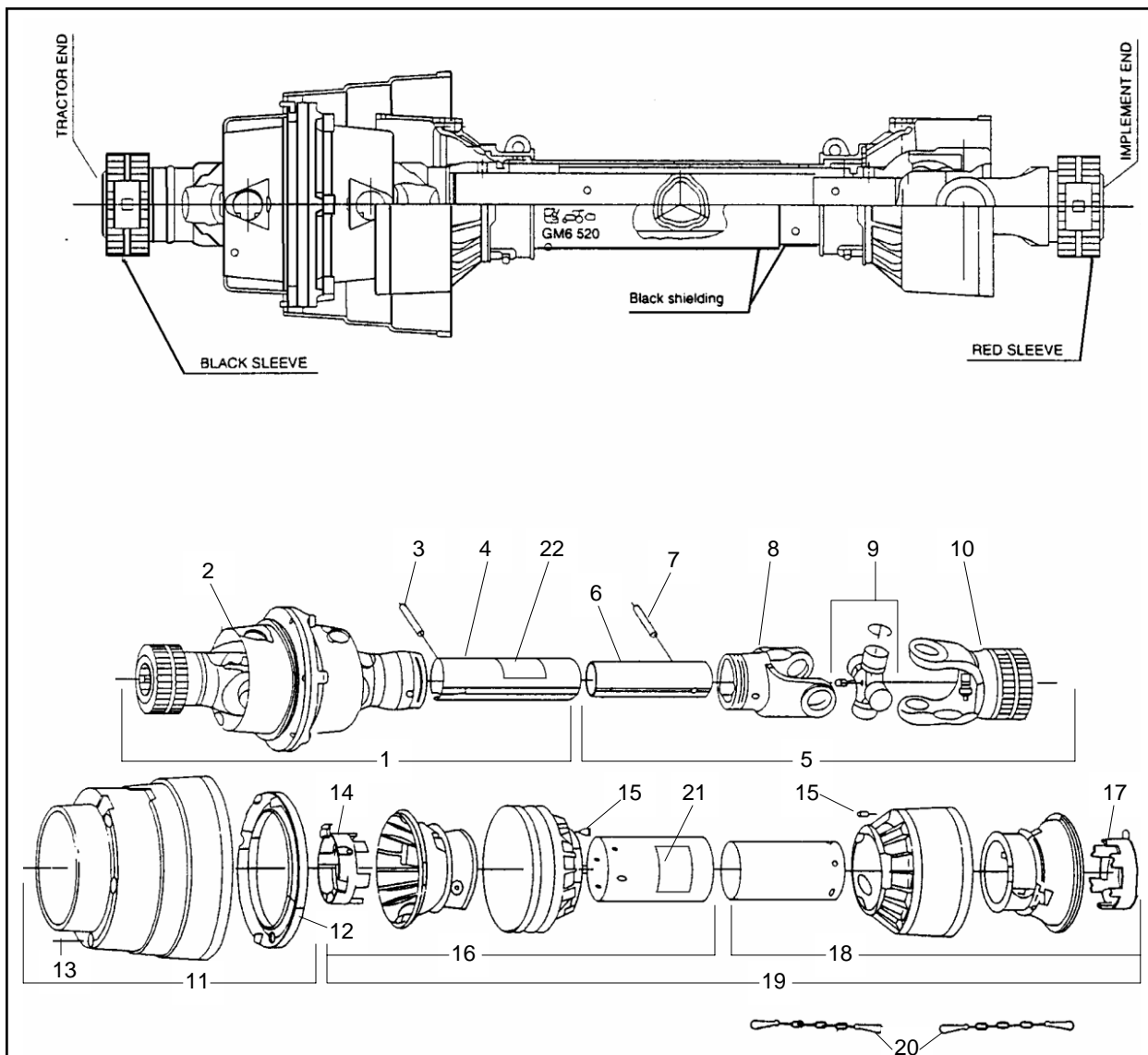
**V-Belt Guards
TRM-7192**

REF. NO.	PART NO.	QTY	DESCRIPTION
1	50022102	1	Gearbox Assy.
2	50022324	1	Vent Plug
3	50019943	1	Spacer, Gearbox
4	15806	4	Lockwasher 1/2"
5	20864	4	HHCS 1/2"-13 x 3"
6	50022085	1	Pulley, 2 Belt 7" Dia.
7	50022107	1	Bushing, Tapered Split SK 1-1/8"
8	50022086	1	Pulley, 1 Belt 7" Dia.
9	50022108	1	Bushing, Tapered Split SDS 1-1/8"
10	65485	2	Key 2"
11	50022096	2	"V" - Belt B-78
12	50022098	1	"V" - Belt B-70



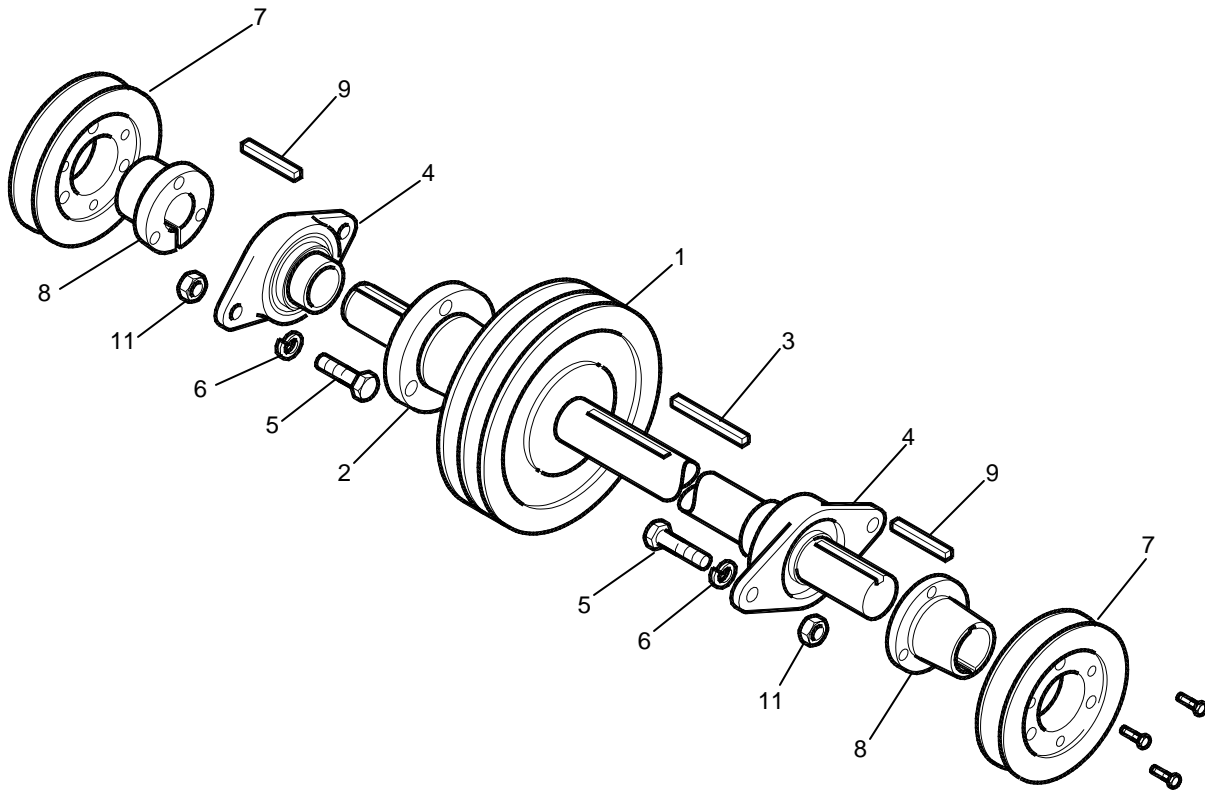
50022102 Gearbox Assembly
TVM-5130
Manufactured by Comer

REF. NO.	PART NO.	QTY	DESCRIPTION	REF. NO.	PART NO.	QTY	DESCRIPTION
1	70292	1	Oil Plug 3/8"	14	50022321	1	Spacer
2	70108	3	Oil Seal 35 x 72 x 10mm	15	70331	2	Shim 35.3 x 48 x .5
3	70133	3	Snap Ring 72 UNI7437	16	50022322	1	Shaft 1-3/8"
4	70642	2	Shim 60.3 x 71.7 x 1	17	70841	1	Snap Ring 35
5	70797	4	Bearing 30207	18	F7502880	1	Plug 1/4"
6	70903	4	Bolt M8 x 14 Gr.8.8	19	50022323	1	Casing
7	50022316	1	Pinion Z15 M5.7	20	50022324	1	Oil Level Plug
8	50022317	1	Cover	21	70639	2	Shim 60.3 x 71.7 x .3
9	70470	1	Locknut M35 x 1.5	22	70640	2	Shim 60.3 x 71.7 x .4
10	50022318	1	Shaft	23	70641	2	Shim 60.3 x 71.7 x .5
11	50022319	1	Spring Washer	24	70329	2	Shim 35.3 x 48 x .3
12	50022320	1	Crown Wheel Z22 M5.7	25	70330	2	Shim 35.3 x 48 x .4
13	70332	2	Shim 35.3 x 48 x 1.3				



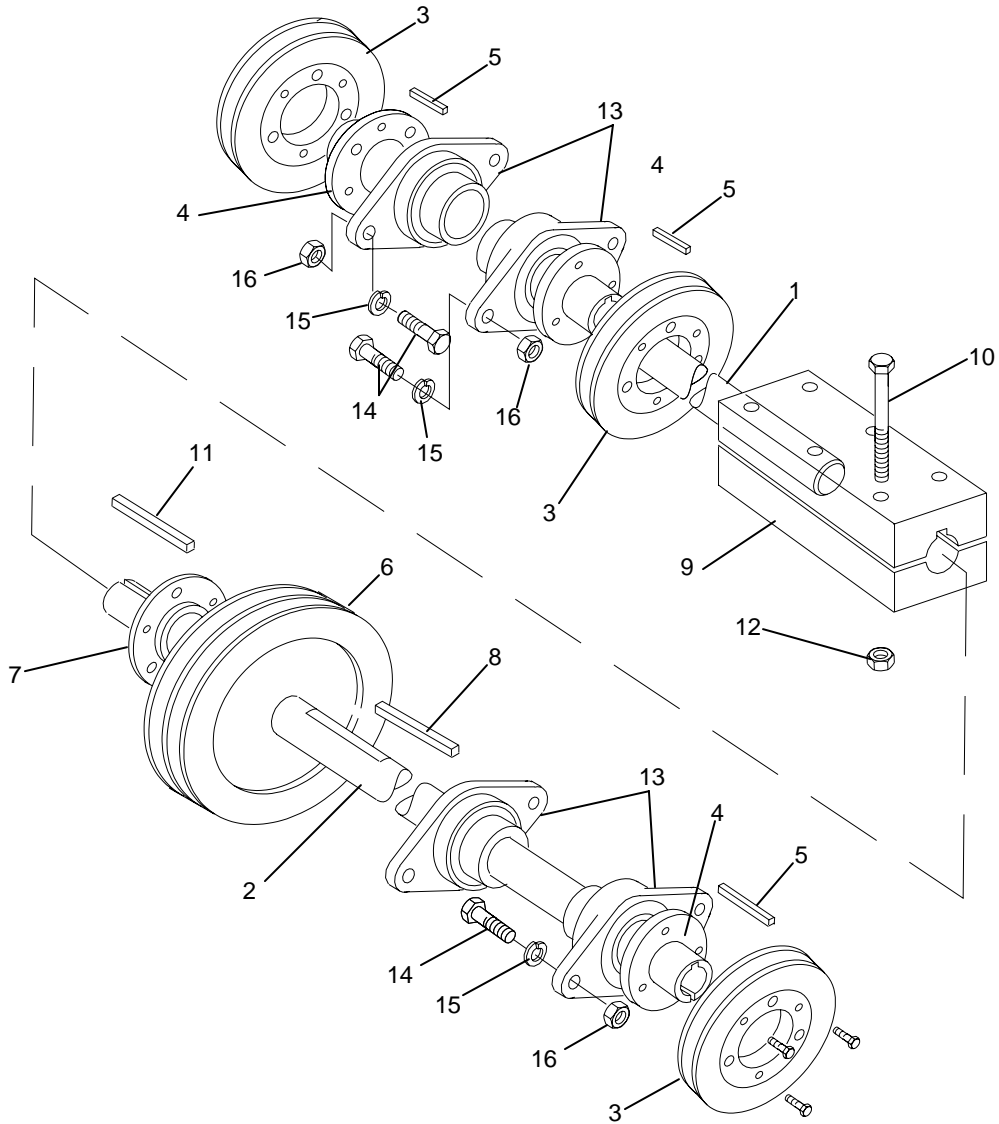
50022104 P.T.O. Shaft and Parts

REF. NO.	PART NO.	QTY	DESCRIPTION	REF. NO.	PART NO.	QTY	DESCRIPTION
1	50022676	1	Half Shaft, Outer	12	50022686	1	Bearing, Soft Cone
2	50022677	1	CV Joint Assembly	13	50022687	6	Screw, Self Tapping
3	50022678	1	Roll Pin 8mm x 65mm	14	50022688	1	Bearing, Shield Tube Outer
4	50022679	1	Outer Tube	15	50022669	2	Lock Pin
5	50022680	1	Half Shaft, Inner	16	50022675	1	Outer Half Shaft Shield
6	50022681	1	Inner Tube	17	50022689	1	Bearing, Shield Tube, Inner
7	50022682	1	Roll Pin 8mm x 55mm	18	50022690	1	Inner Half Shaft Shield
8	50022692	1	Yoke, Inner Tube	19	50022691	1	Complete Shield
9	64694	1	Cross Bearing Kit	20	50022673	3	Safety Chain
10	50022684	1	Yoke, Implement End	21	78608	1	Danger Decal
11	50022685	1	Wide Angle Shield	22	78786	1	Danger Decal



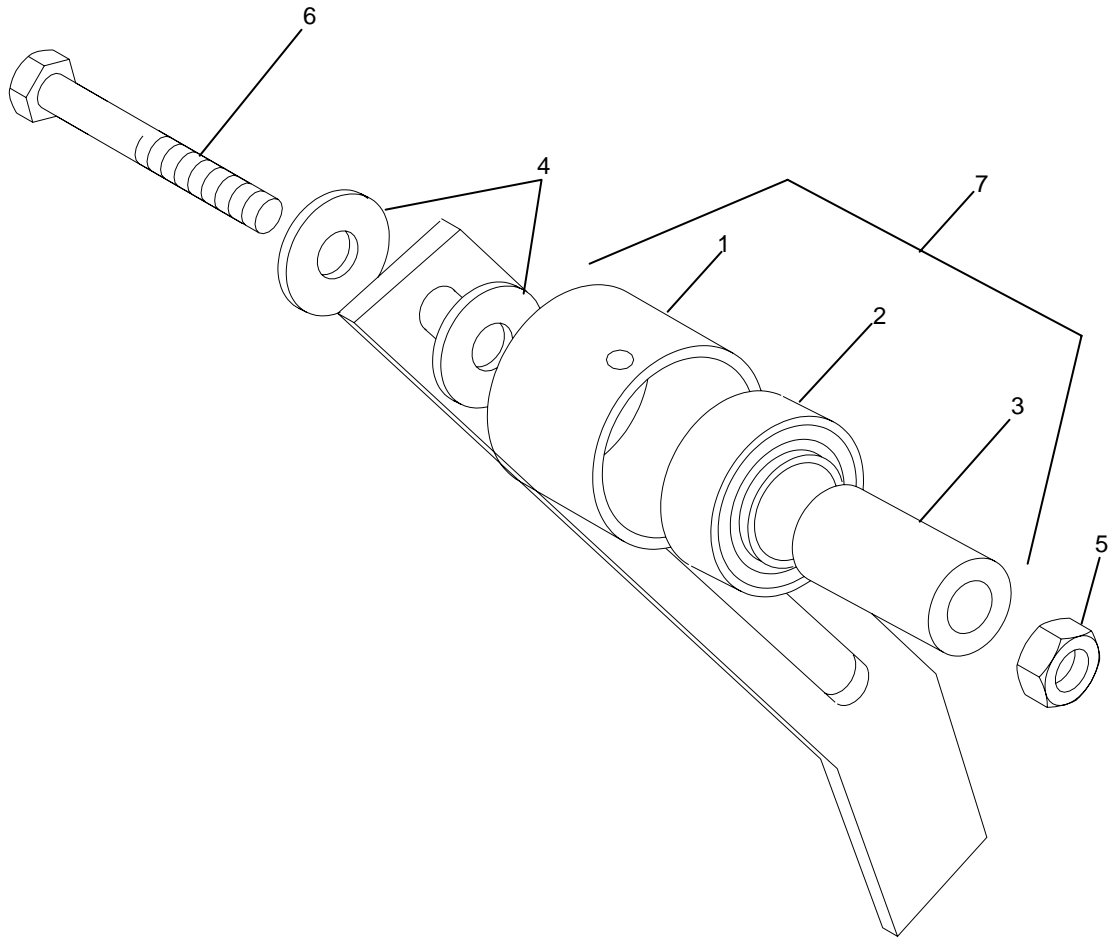
Front Jackshaft Assembly
TVM-5130 & TVM-3077

REF. NO.	PART NO.	QTY	DESCRIPTION
1	50022087	1	Pulley 2 Belt 6.6PD
2	50022106	1	Bushing Split Taper SDS 1"
3	65484	1	Key 2"
4	50022101	2	Bearing 1" 2 Hole Flange
5	44614	4	HHCS 7/16"-14 x 1-1/4" Gr.5
6	15819	4	Lockwasher 7/16"
7		2	Pulley 1 Belt 4.4 PD
8	50022105	2	Bushing Split Taper SH 1"
9	93810	2	Key 1" x 1/4"
10	50019878	1	Front Jackshaft
11	8151400	4	Hex Nut 7/16"-14 Gr.5



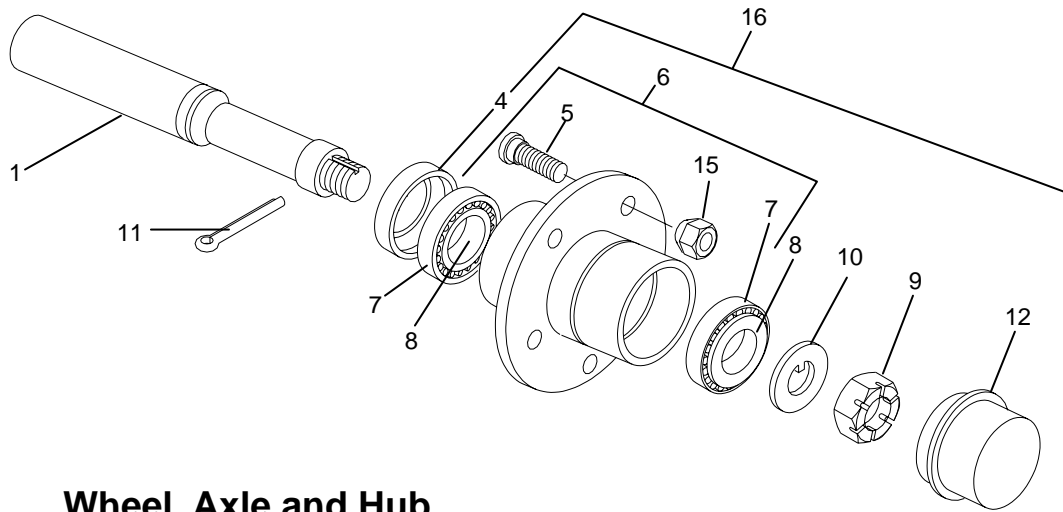
Rear Jackshaft Assembly

REF. NO.	PART NO.	QTY	DESCRIPTION	REF. NO.	PART NO.	QTY	DESCRIPTION
1	50022327	1	RH Rear Jackshaft	9	50019999	1	Jackshaft Coupling Assy.
2	50019883	1	LH Rear Jackshaft	10	20504	6	HHCS 5-16"-18 x 2-1/2"
3	50022084	3	Pulley, 1 Belt 4.4 PD	11	50019885	1	Key 5"
4	50022105	1	Bushing, Split Taper SH 1"	12	44553	6	Hex Nut, Nylock 5/16"-18
5	93810	5	Key 1" x 1/4"	13	50022101	3	Bearing 1", 2 Bolt Flange
6	50022419	1	Pulley, 3 Belt 6.6 PD	14	44614	6	HHCS 7/16"-14 x 1-1/4"
7	50022428	1	Bushing, Split Taper SD 1"	15	15819	6	Lockwasher 7/16"
8	50019884	1	3" Key	16	8151400	6	Hex Nut 7/16"-14

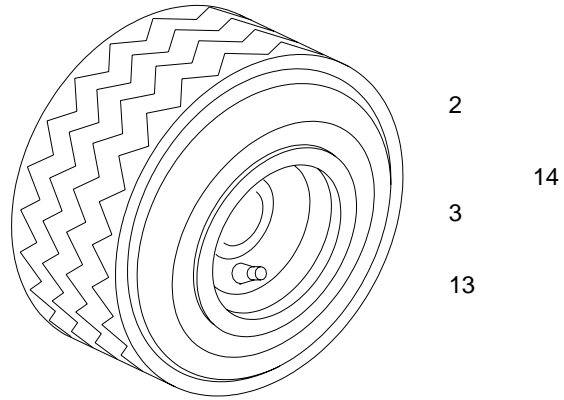


Belt Idler Assembly

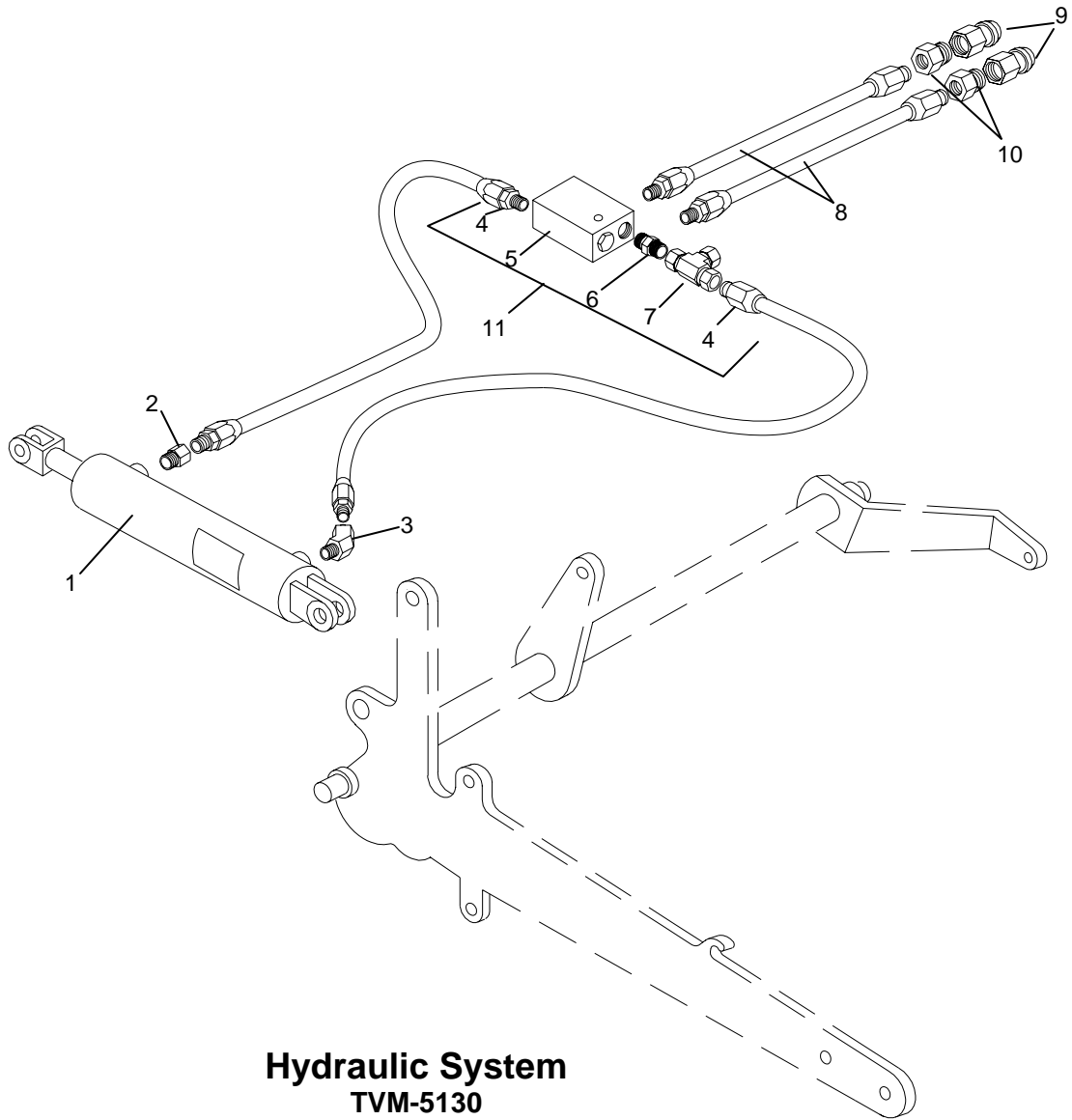
REF. NO.	PART NO.	QTY	DESCRIPTION
1	50019889	1	Idler Shell 2-1/2"
	50019912	1	Idler Shell 2"
2	50019890	1	Bearing, 1" ID x 52 mm OD
3	50019891	1	Bushing 1" OD x 2"
4	15829	2	Flatwasher 1/2"
5	44539	1	Nylock Hex Nut 1/2"-13
6	20864	1	HHCS 1/2"-13 x 3" Gr.5
7	50019892	1	Belt Drive Idler Assy. 2-1/2"
	50019913	1	Belt Drive Idler Assy. 2"



Wheel, Axle and Hub Assembly

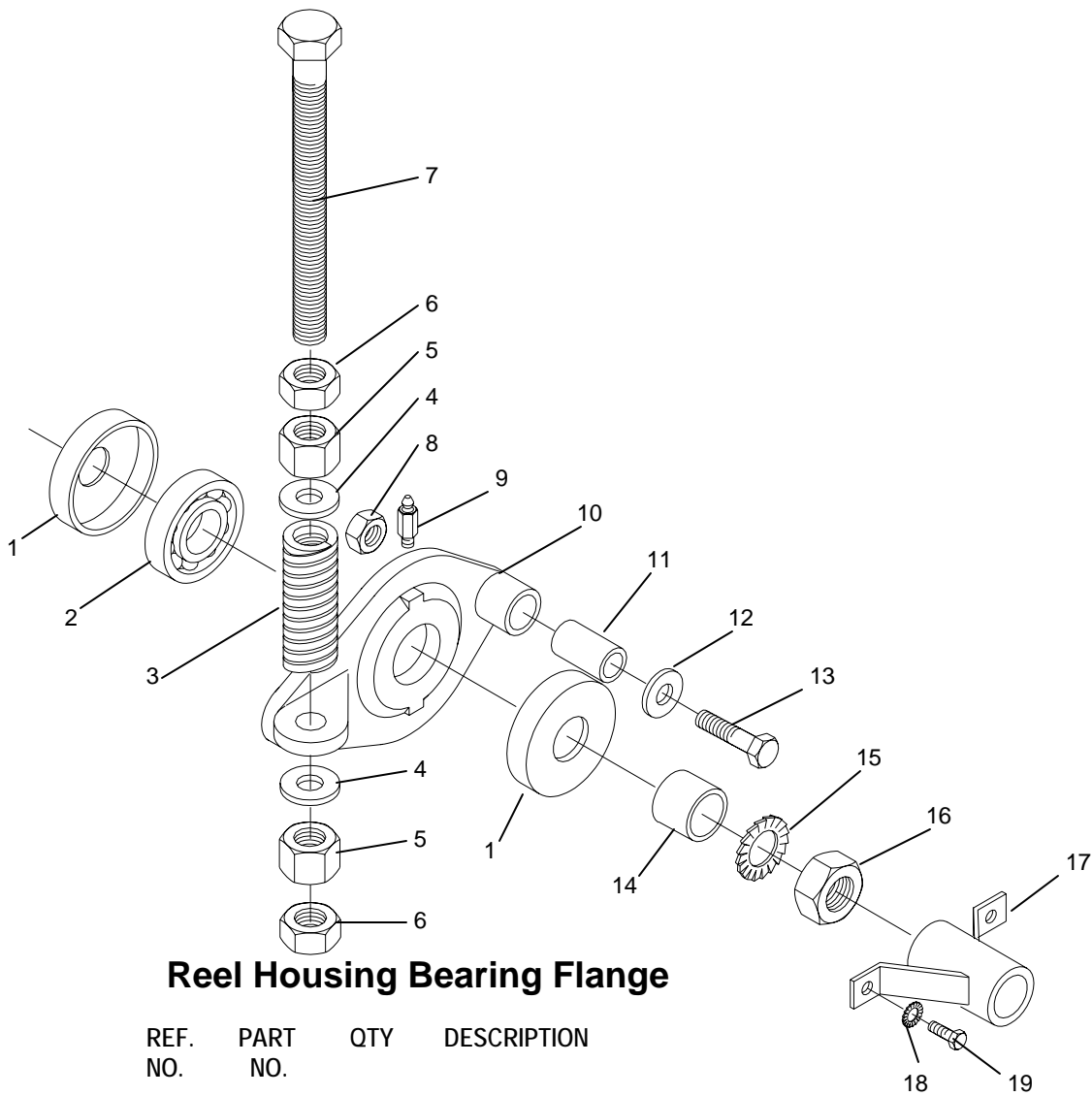


REF. NO.	PART NO.	QTY	DESCRIPTION
1	50019879	1	Axle 10"
2	50022630	1	Tire, 18 x 8.5 x 8 (Ribbed) TVM-5130
	50022625	1	Tire, 18 x 8.5 x 8 (Highway) TVM-5130
	50022628	1	Tire, 16 x 6.5 x 8 (Ribbed) TVM-3077
3	50022626	1	Wheel 8 x 7-5 Bolt, TVM-5130
	50022629	1	Wheel 8 x 5-3/8", 5 Bolt, TVM-3077
4	50022632	1	Seal
5	52012	5	Wheel Stud 1/2"-20 x 1-7/8"
6	50022631	1	Hub w/ Cups
7	170	2	Bearing Cup L44610
8	22	2	Bearing Cone L44643
9	120	1	Castle Nut 3/4"-16
10	50019662	1	Keyed Washer 3/4"
11	20166	1	Cotter Pin 1/8" x 1-1/4"
12	50022633	1	Dust Cap
13	50022627	1	Valve Stem
14	50022178	1	Ribbed Tire & Wheel Assy. TVM-5130
	50019920	1	Highway Tire & Wheel Assy. TVM-5130
	50022364	1	Highway Tire & Wheel Assy. TVM-3077
15	15515	5	Lug Nut, 1/2"-20 UNF
16	50022095	1	Hub Assy.



Hydraulic System TVM-5130

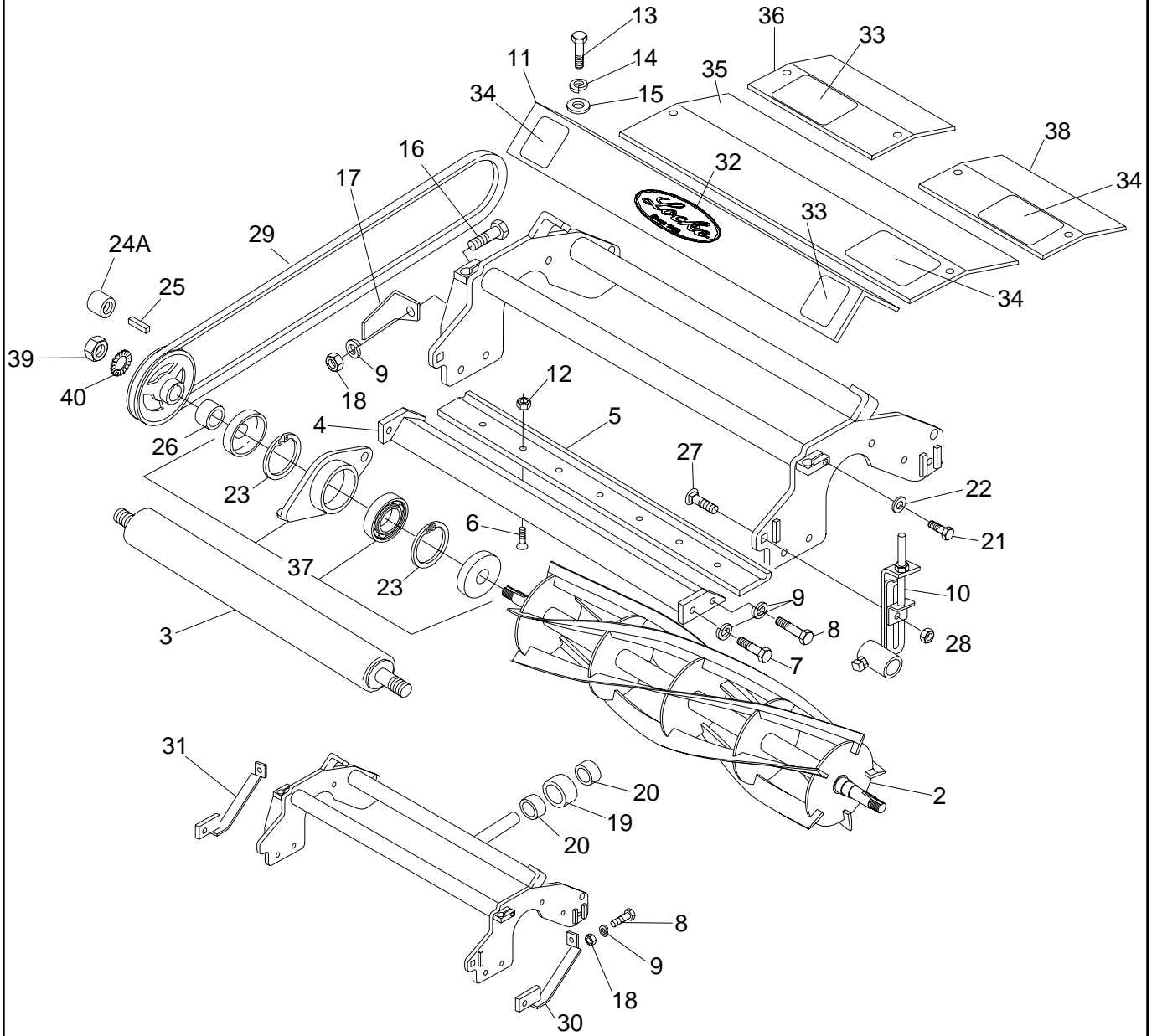
REF. NO.	PART NO.	QTY	DESCRIPTION
1	50022177	1	Hydraulic Cylinder 2-1/2" Bore x 10" Stroke x 1" Rod Dia. W/ Decal
	50022590	1	Seal repair Kit for 50022177 Hydraulic Cylinder
2	50022093	1	AD 1/4" NPTF x 1/4" NPTM -1/32" ORFC
3	50022094	1	Elbow 45° 1/4" NPTF x 1/4" NPTM
4	50019926	2	Hose Assembly 18" 1/4" NPTM ends
5	50019925	1	Check Valve
6	50019927	1	AD 1/4" NPTM Close Nipple
7	50019928	1	TE 1/4" NPTF Adaptor Tee
8	50022091	2	Hose Assembly 120"
9	50022092	2	QD Adaptor
10	50022090	2	AD 1/2" NPTM x 1/4" NPTF
11	50019929	1	Check Valve Assy.
12	50022079	1	Caution Decal



Reel Housing Bearing Flange

REF. NO.	PART NO.	QTY	DESCRIPTION
1	50022187	2	Oil Seal CR11392 Reel Bearing
2	50022189	1	Bearing
3	50022186	1	Reel Adjuster Compression Spring
4	20748	2	Flatwasher 5/8" SAE CP
5	44743	2	Hex Nut 5/8"-18
6	15653	2	Jam Nut 5/8"-18
7	44628	1	Adjustment Screw 5/8" NF x 8" G5
8	10151400	1	Jam Nut 7/16"-14
9	50022184	1	Grease Fitting Extended 1/4"-20
10	50022146	1	Bearing Housing, Reel Bearing
11	50022188	1	Pivot Bushing
12	15915	1	Flatwasher 3/8"
13	50022143	1	Reel Housing Pivot Bolt 7/16"-14
14	50022124	1	Reel Idler, End Spacer
15	44612	1	Lockwasher 3/4" External
16	44606	1	Jam Nut 3/4"-16
17	50022133	1	Safety Cup, Reel Shaft
18	44611	1	Lockwasher 3/8" External
19	20035	1	HHCS 3/8"-16 x 1/2"

Cutting Unit

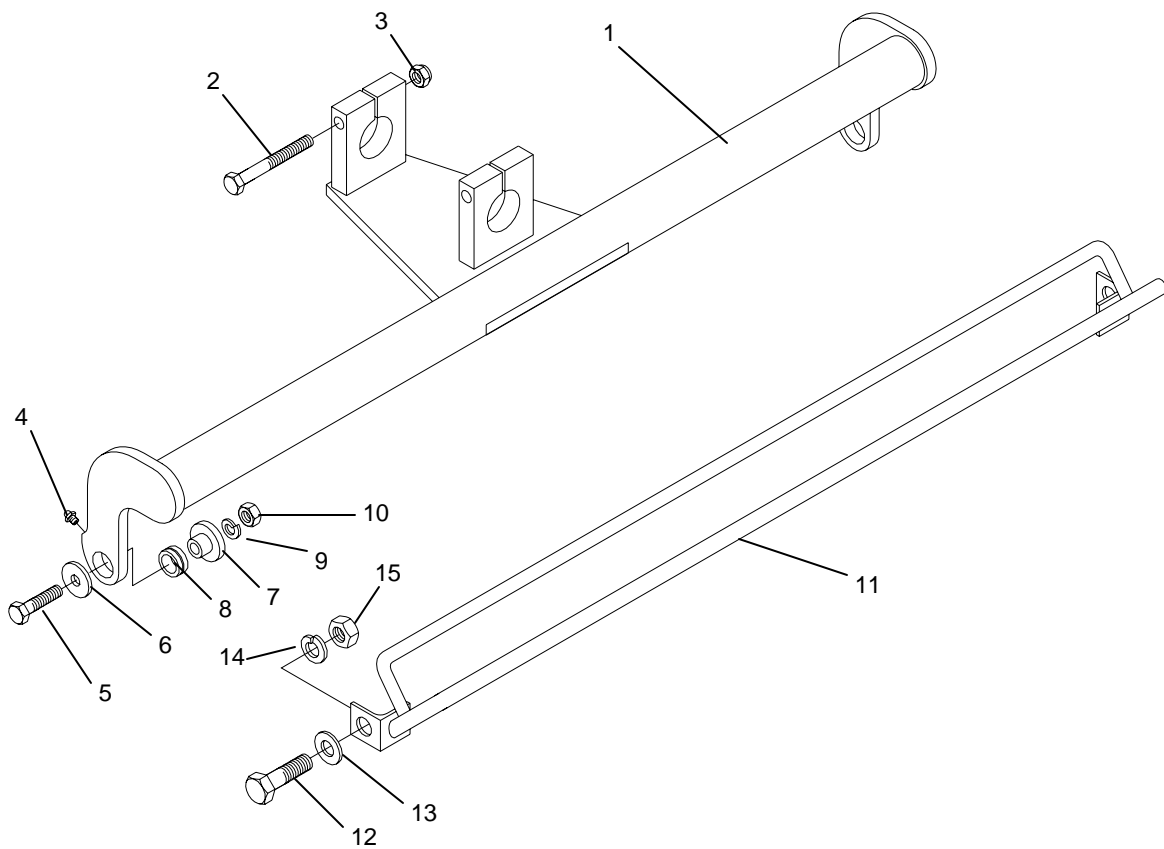


Cutting Unit

REF. NO.	PART NO.	QTY	DESCRIPTION
1	50022183	1	Reel Frame Unit #1
	50022205	1	Reel Frame Unit #2
	50022207	1	Reel Frame Unit #3
	50022211	1	Reel Frame Unit #4
	50022215	1	Reel Frame Unit #5
	50022225	1	Reel Frame Unit #6 - Single Roller
	50022226	1	Reel Frame Unit #7 - Single Roller
	50022219	1	Reel Frame Unit #6 - Double Roller
	50022221	1	Reel Frame Unit #7 - Double Roller
2	50019828	1	Reel, 4 Blade
	50019830	1	Reel, 5 Blade
	50019832	1	Reel, 6 Blade
	50019834	1	Reel, 7 Blade
	50019836	1	Reel, 8 Blade
	50019838	1	Reel, 9 Blade
3	50022191	1	Smooth Roller Assembly
	50022202	1	Grooved Roller Assembly
4	50022138	1	Bed Knife Holder (Bed Bar)
5	50022134	1	ARF Low Cut Bedknife
6	44552	7	Bedknife Screw 5/16"-18 x 1"
7	44610	2	HHCS 7/16"-14 x 1" Gr8
8	44614	2	HHCS 7/16"-14 x 1-1/4" Gr8
9	15819	7	Lockwasher 7/16"
10	50022154	1	Roller Bracket Assy. LH (1&2 Roller)
	50022156	1	Roller Bracket Assy. RH (1&2 Roller)
11	50022325	1	Top Shield, Mowing Unit (1)
	50022284	1	Top Shield, Mowing Unit (2&3)
	50022285	1	Top Shield, Mowing Unit (4)
	50022286	1	Top Shield, Mowing Unit (5)
12	44553	7	Hex Nut, Nylock 5/16"-18
13	1161006	2	HHCS 5/16"-18 x 3/4"
14	15808	2	Lockwasher 5/16"
15	15907	2	Flatwasher 5/16"
16	1161416	2	HHCS 7/16"-14 x 1-3/4" - 1 Roller
	44614	1	HHCS 7/16"-14 x 1-3/4" - 2 Roller
17	50022125	1	Pulley Scraper, RH (#1,2,4)
	50022126	1	Pulley Scraper, LH (#3,5)
18	8151400	3	Hex Nut 7/16"-14 Gr8
19	50022212	1	Nylon Roller
20	50022213	2	Set Collar
21	20034	2	HHCS 3/8"-16 x 1" Gr8
22	15812	2	Lockwasher 3/8"
23	50022185	2	Retaining Ring 2-1/2" Internal
24	50019951	1	Drive Sheave - Reel
24A	50022826	1	Shaft Extension for Reels 6 & 7 (TRM-7192)
25	20337	1	Square Key 1" x 4"
26	50022121	1	Reel Drive Side Spacer
27	5161614	2	Carriage Bolt 1/2"-13 x 1-1/2"
28	44539	3	Hex Nut, Nylock 1/2"-13
29	50022097	1	Belt - V B64 Reel Drive
30	50022119	1	Skid Shoe, RH
31	50022120	1	Skid Shoe, LH
32	500033	1	Locke Decal
33	50022077	1	Danger Decal
34	50022075	2	Danger Decal
35	50022287	1	Top Shield Mowing Unit #6 - 2 Rollers
	50022288	1	Top Shield Mowing Unit #7 - 2 Rollers
36	50022290	1	Top Shield Mowing Unit #6 & 7 - 1 Roller RH
37		A/R	Refer to Reel Bearing Housing Flange Parts Breakdown
38	50022289	1	Top Shield Mounting Unit #6 & 7 - 1 Roller LH
39	44606	1	Jam Nut 3/4" NF CP
40	44162	1	Star Lockwasher 3/4" Ext.

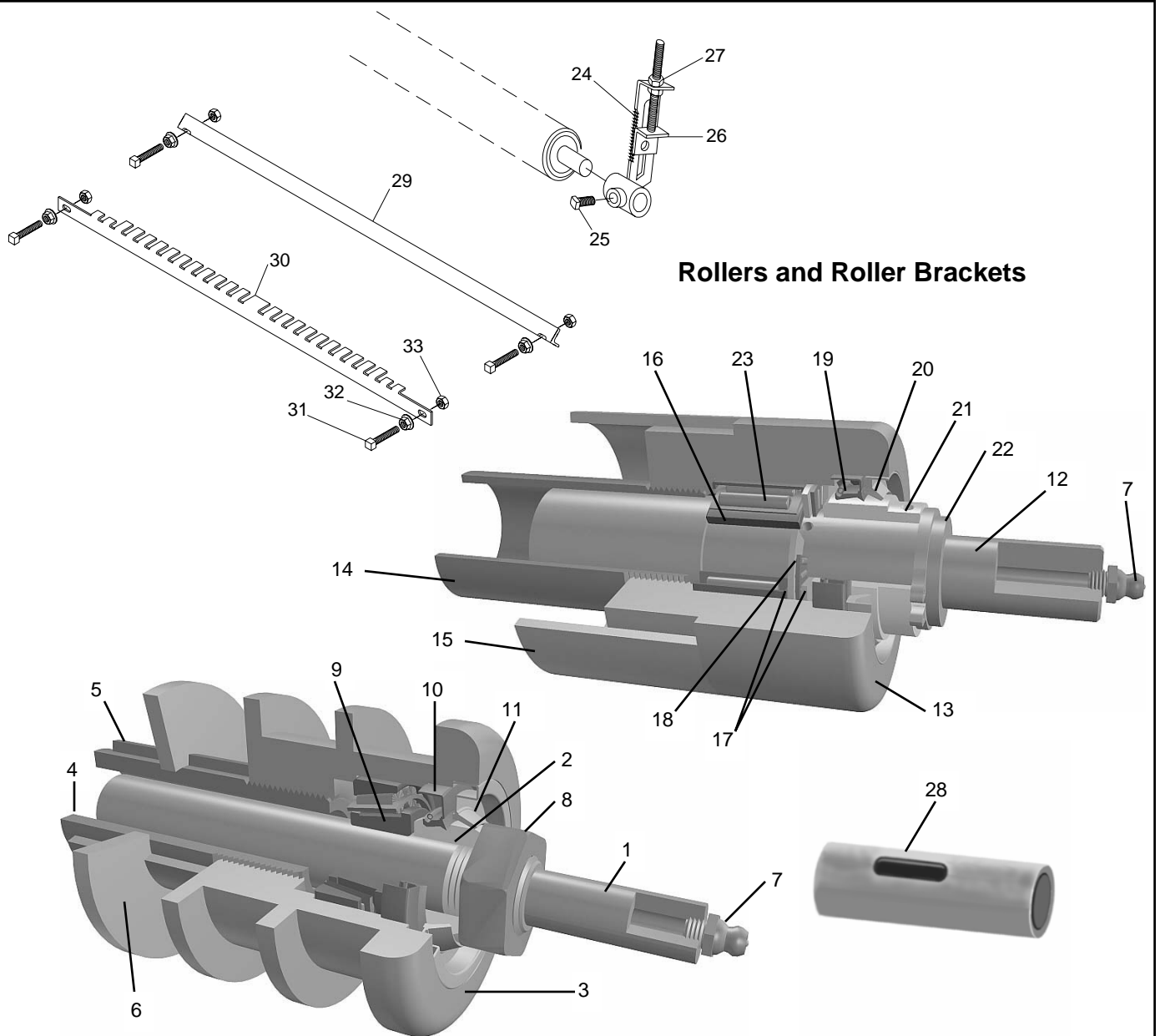
Cutting Unit V-Reel

REF. NO.	PART NO.	QTY	DESCRIPTION	REF. NO.	PART NO.	QTY	DESCRIPTION
1	50035249	1	TRM-V Reel Weldment, 10 Blade	25	15808	2	Lockwasher 5/16" CP
	50035256	1	TRM-V Reel Weldment, 8 Blade	26	15907	2	Flatwasher 5/16" USS CP
2	50033911	1	TRM-V Reel Frame Weldment, #1	27	19100	6	HHCS 3/8" x 3/4" CP G5
	50033912	1	TRM-V Reel Frame Weldment, #2	28	15812	6	Lockwasher 3/8" CP
	50033916	1	TRM-V Reel Frame Weldment, #3	29	15830	4	Flatwasher 3/8" SAE CP
	50033917	1	TRM-V Reel Frame Weldment, #4	30	15597	1	Hex Nut 3/8" NF CP
	50033918	1	TRM-V Reel Frame Weldment, #5	31	50035241	2	Washer, Fender .375 ID x 1.25 OD
	50033919	1	TRM-V Reel Frame Weldment, #6	32	10151200	1	Jam Nut 3/8"-16 CP
	50035210	1	TRM-V Reel Frame Weldment, #7	33	44612	2	Star Lockwasher 3/4" Ext.
			Double Roller	34	50023877	1	Spring, Compression
	50035244	1	TRM-V Reel Frame Weldment, #6	35	44621	9	Serrated Flange Hex Nut 3/8" CP
			Single Roller	36	44673	2	Set Screw 3/8" x 2" CP G8
	50035245	1	TRM-V Reel Frame Weldment, #7	37	44889	2	Set Screw 3/8" x 1-1/2" CP G8
			Single Roller	38	44608	4	Jam Nut 1/2" CP NF
3	50033889	1	Skid Shoe, Left Hand	39	50030140	1	V-Reel Decal
4	50033890	1	Skid Shoe, Right Hand	40	50022075	1	Danger Decal
5	50033885	2	Bearing Housing	41	50022077	1	Danger Decal
6	50036105	1	Top Shield, TRM-V Reel #1	42	500034	1	Locke Decal
	50036106	1	Top Shield, TRM-V Reel #2,3	43	20110	2	HHCS 1/2" x 2" G5 ZP
	50036107	1	Top Shield, TRM-V Reel #4	44	20881	1	HHCS 3/8" x 1-1/2" G5 ZP
	50036108	1	Top Shield, TRM-V Reel #5	45	50036135	2	Bed Bar Spacer
	50036109	1	Top Shield, TRM-V Reel #6 Double	46	50022097	1	Belt - V B64 Reel Drive
	50036110	1	Top Shield, TRM-V Reel #7 Double	47	8151400	1	Hex Nut 7/16"-14 G5
	50036111	1	Top Shield, TRM-V Reel #6 Single	48	15819	1	Lockwasher 7/16"
	50036112	1	Top Shield, TRM-V Reel #7 Single	49	50022125	1	Pulley Scraper, RH (#1,2,4)
7	93810	1	Key, 1/4" sq. x 1"	50	1161416	1	Pulley Scraper, LH (#3,5)
8	50019951	1	Sheave. 7/8" Bore x 4.40 PD				HHCS 7/16"-14 x 1-3/4" Single Roller
9	50022189	2	Bearing, Reel		44614	1	HHCS 7/16"-14 x 1-1/4" Double Roller
10	50022187	4	Oil Seal	51	50022154	1	Roller Bracket Assy. LH (1& 2 Roller)
11	50022185	2	Retaining Ring		50022156	1	Roller Bracket Assy. RH (1 & 2 Roller)
12	50022184	2	Grease Fitting, 1/4"-28 (Extended)	52	44539	2	Hex Nut, Nylock 1/2"-13
13	44606	2	Jam Nut 3/4" NF CP	53	5161614	2	Carriage Bolt 1/2"-13 x 1-1/2"
14	50022121	1	Spacer, Drive Side	54	50022826	1	Shaft Extension for Reels 6 & 7 (TRM-7192 Only)
15	50022124	1	Spacer, Reel End		50036135	1	Bed Bar Assembly (55-58)
16	50022133	1	Safety Cup Weldment	55	44552	7	Flat Head Screw 5/16" x 1"
17	50025702	1	Rod End, 3/8"-24 Male Right Hand	56	44553	7	Hex Nut 5/16" CP Nylock
18	50035220	2	Rod End, High Strength 1/2"-20 Male Right Hand	57	50022134	1	Bedknife
19	50022191	1	Smooth Roller Assembly	58	50033880	1	Bed Bar
	50022202	1	Grooved Roller Assembly				
20	50033906	1	Trunion				
21	50033903	1	Adjuster Inner Tube				
22	50033904	1	Spacer Tube				
23	50033909	1	Adjuster Screw Weldment				
24	1141006	2	HHCS 5/16" x 3/4"				



**Pivoting Arm (2 Rollers only Reels 6&7)
Toe Guard (Only on Reels 6&7)**

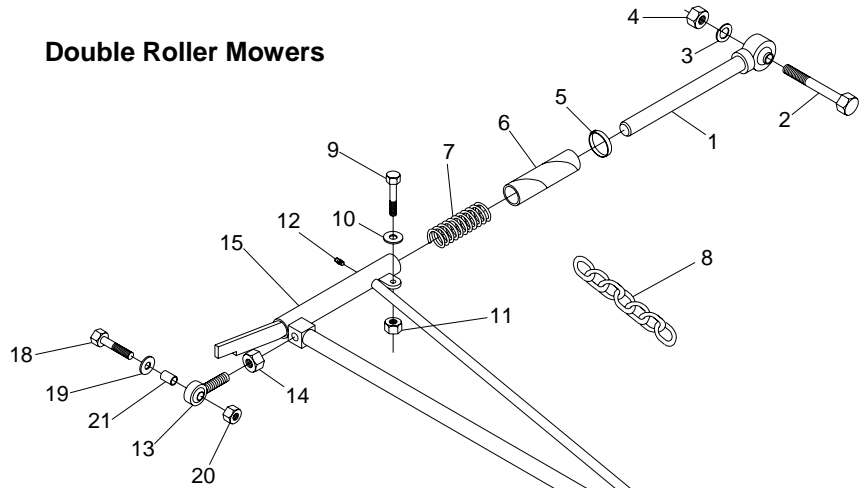
REF. NO.	PART NO.	QTY	DESCRIPTION
1	50022015	1	Pivoting Arm, for 2 Roller Only
2	19055	2	HHCS 3/8"-16 x 3" Gr5
3	44601	2	Hex Nut, Nylock 3/8"-16
4	50019776	2	Grease Fitting
5	20881	2	HHCS 3/8"-16 x 1-1/2"
6	15830	2	Flatwasher 3/8"
7	50022000	2	Brass Bushing
8	50022009	2	Pivot Bushing Race
9	15812	2	Lockwasher 3/8"
10	10151200	2	Jam Nut 3/8"-16
11	50022229	1	Toe Guard Assembly
12	15093	2	HHCS 1/2" x 1-1/2"
13	15916	2	Flatwasher 1/2"
14	15806	2	Lockwasher 1/2"
15	8151600	2	Hex Nut 1/2"



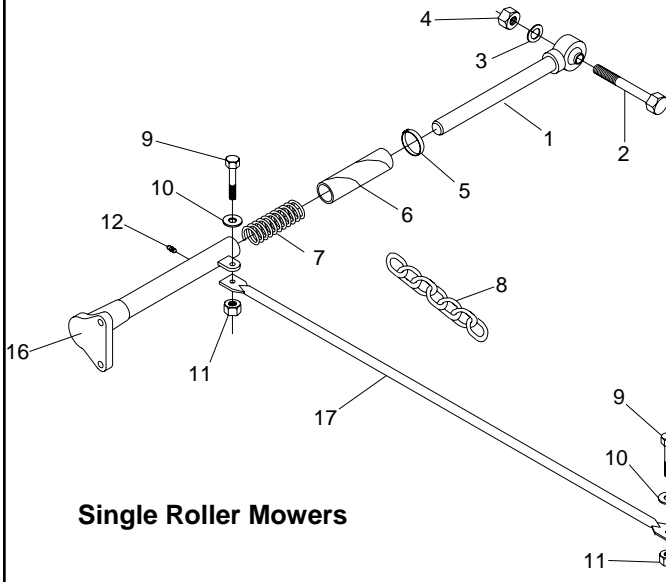
Rollers and Roller Brackets

REF. NO.	PART NO.	QTY	DESCRIPTION	REF. NO.	PART NO.	QTY	DESCRIPTION
1	50022596	1	Roller Shaft, Grooved Roller	18	50022612	2	Thrust Bearing
2	50022597	2	Wear Sleeve	19	50022613	2	Grease Seal, Smooth Roller
3	50022598	2	Roller, End Grooved Roller	20	50022614	2	Dust Seal, Smooth Roller
4	50022599	1	Inner Tube, Grooved Roller	21	50022606	2	Wear Sleeve, Smooth Roller
5	50022600	A/R	Spacer	22	50022615	2	Retaining Ring
6	50022601	A/R	Washer	23	50022616	2	Bearing, Needle
7	449	2	Grease Fitting	24	50022155	1	Roller Bracket, RH
8	44606	2	Jam Nut, 3/4"-16		50022150	1	Roller Bracket, LH
9	50022602	2	Bearing Set	25	18141206	2	Set Screw 3/8"-16 x 3/4"
10	50022603	2	Grease Set	26	50022153	2	Roller Bracket Adjuster
11	50022604	2	Dust Set	27	8151200	4	Hex Nut 3/8"-16
12	50022605	1	Roller Shaft, Smooth Roller	28	50022203	2	Adapter Bushing
13	50022607	2	Roller End, Smooth Roller	29	50022735	1	Scraper, Smooth Roller
14	50022608	1	Inner Tube	30	50022734	1	Scraper, Grooved Roller
15	50022609	1	Outer Tube	31	44643	2	Set Screw 3/8" x 2-1/4"
16	50022610	2	Bearing Inner Race	32	44621	2	Flanged Hex Nut 3/8"
17	50022611	4	Thrust Bearing Race	33	15597	2	Hex Nut 3/8"

Double Roller Mowers

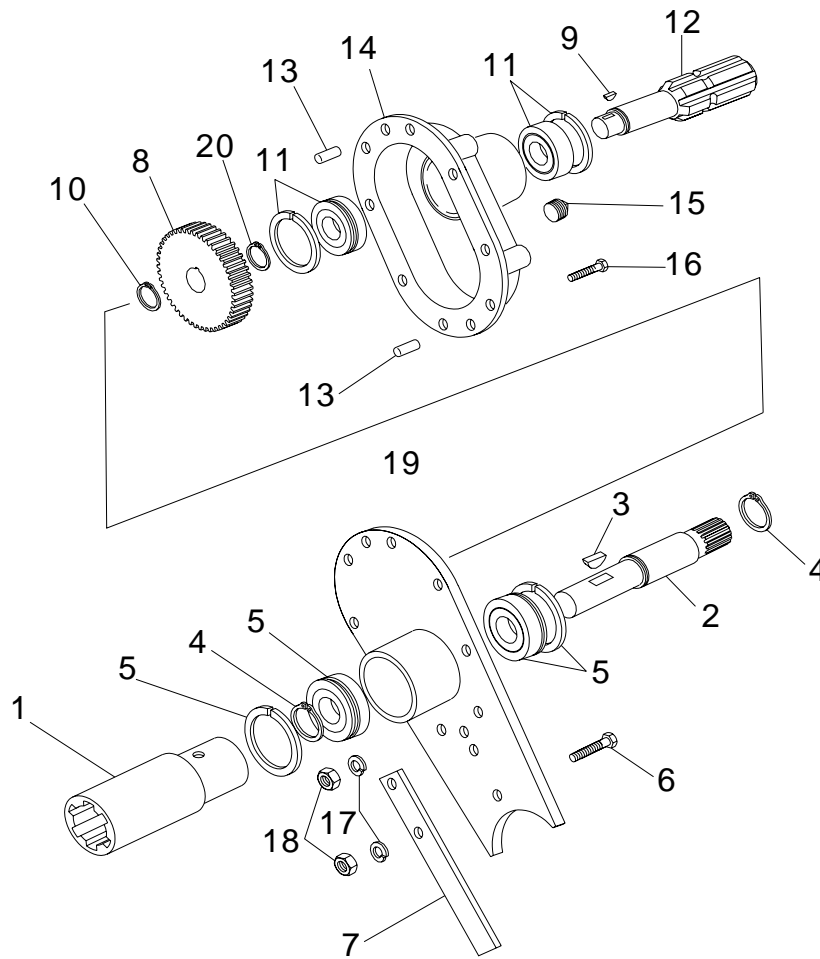


Stabilizer Arm and Telescoping Arm



Single Roller Mowers

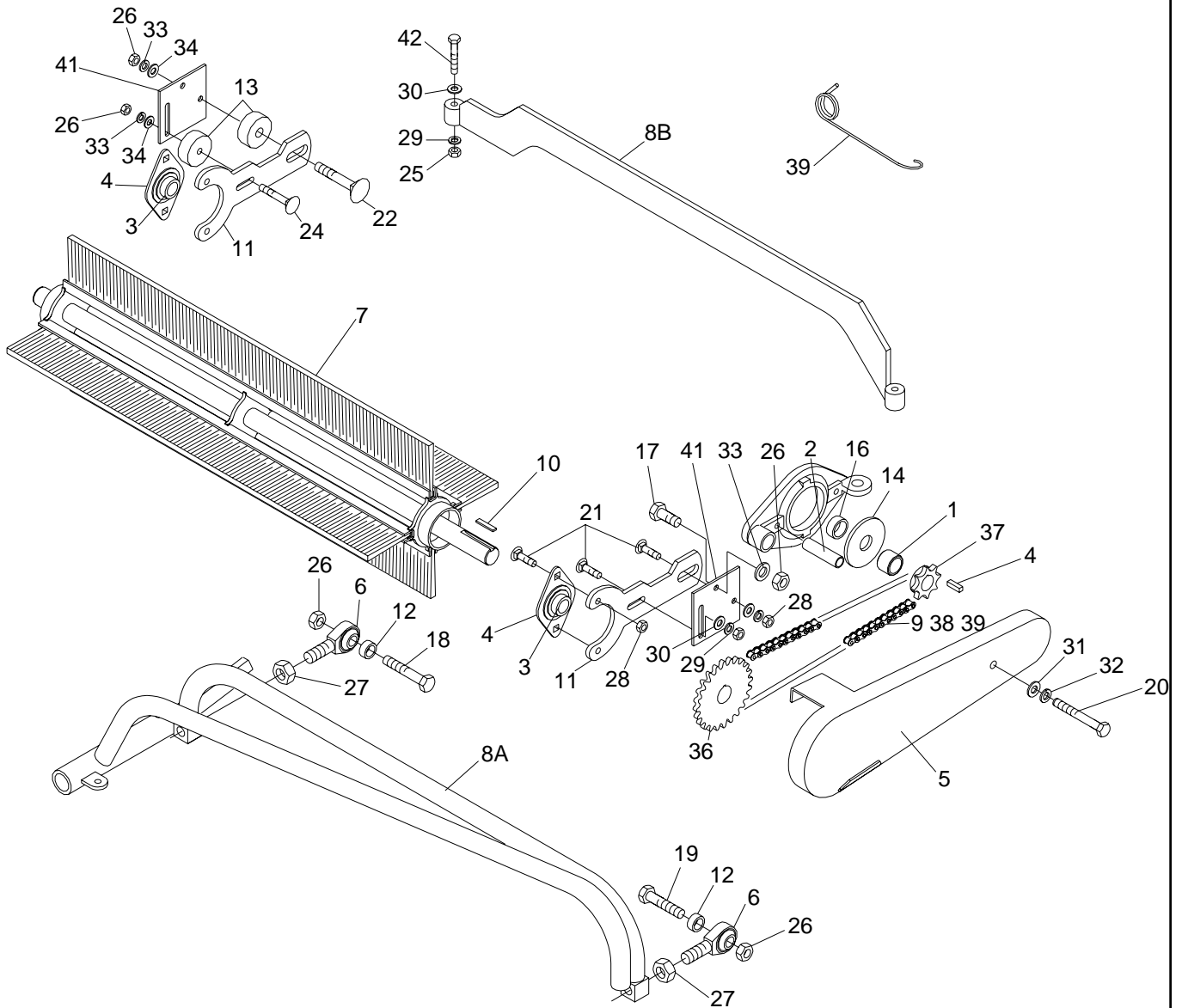
REF. NO.	PART NO.	QTY	DESCRIPTION
1	50022130	1	Telescoping Arm, Shaft Assy.
2	50022123	1	Pivot Bolt 3/4"-10
3	146	1	Lockwasher 3/4"
4	19517	1	Hex Nut 3/4"-10
5	50022068	1	Pinch Clamp 1-23/32" x 1-25/32"
6	50019665	1	Telescoping Arm Sleeve
7	50022069	1	Telescoping Arm Spring
8	50022142	1	Chain, Safety
9	20011	2	HHCS 5/16"-18 x 1-1/2" G5
10	20568	1	Flatwasher 5/16"
11	15528	1	Hex Nut 5/16"-18
12	449	1	Grease Fitting 1/4"-28
13	500199870	2	Rod End RH 5/8"-18
14	15653	2	Jam Nut 5/8"-18
15	50022193	1	Stabilizer Arm RH (Dbl Roller)
	50022164	1	Stabilizer Arm LH (Dbl Roller)
16	50022198	1	Telescoping Arm, Single Roller
17	50022199	1	Telescoping Arm, Stay Rod
18	20110	2	HHCS 1/2"-13 x 2 G5
19	15829	A/R	Flatwasher 1/2"
20	44539	2	Hex Nut Nylock 1/2"-13
21	50022484	2	Pivot Bushing (Dbl. Roller)



50019543 Backlapper Assembly

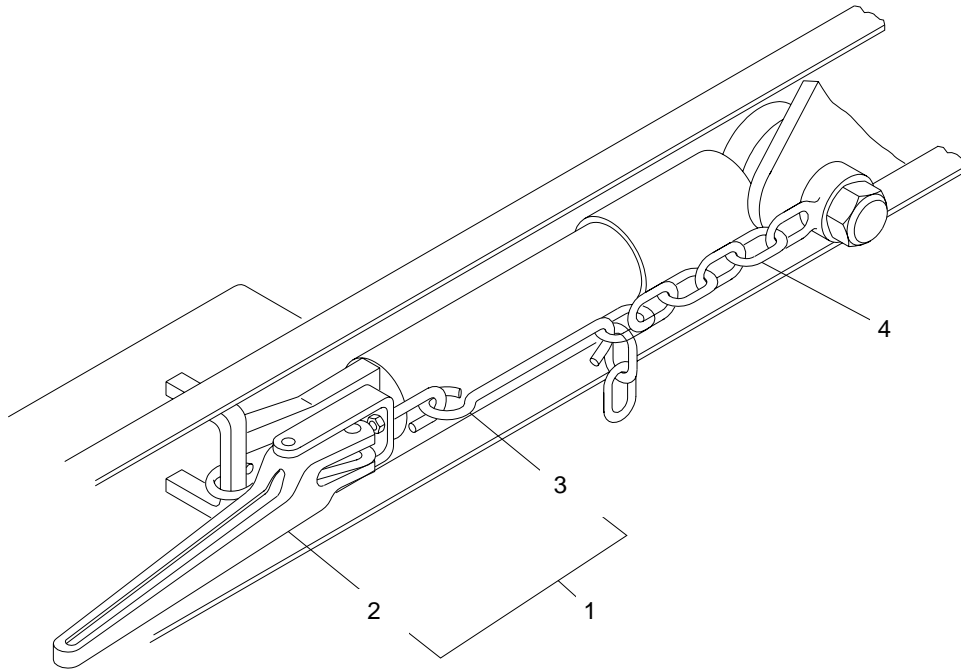
REF. NO.	PART NO.	QTY	DESCRIPTION
1	50022170	1	Coupling - Pump 1-3/8" 6 Spl x 1" Bore
2	50022171	1	Tractor Mt. Backlapper Input Shaft
3	50026279	1	Woodruff Key #808 1/4" x 1"
4	50022173	1	Snap Ring Ext 5100-118 1.188 Shaft
5	50022173	1	Bearing 6006-22RSNR 30 x 55 x 13mm
6	19114	2	HHCS 1/4"-20 x 1-1/4" Gr5
7	50022174	1	Stop, Tractor Drawbar
8	50022300	1	Gear (45 Tooth)
9	20593	1	Woodruff Key #606 3/16" x 3/4"
10	50022291	1	Snap Ring Ext. .875 Shaft
11	50022292	2	Bearing 6205-2RS1NR 25 x 52 x 15mm
12	50022293	1	Output Shaft
13	44613	2	Dowel Pin 1/4"OD x 1/2" Long
14	50022295	1	Backlapper Case
15	50022296	1	Plug 1/2" NPT
16	44186	8	HHCS 1/4"-20 x 1" Gr5
17	15918	8	Flatwasher 1/4" SAE
18	44566	8	Hex Nut Nylock 1/4"-20
19	50022299	1	Backlapper Case Cover
20	50022326	1	Snap Ring Ext. .984

Track Brush



Track Brush

REF. NO.	PART NO.	QTY	DESCRIPTION
1	50022121	1	Spacer - Drive Side
2	50022437	1	Spacer
3	50022468	2	Bearing 1"
4	50022439	1	Step Key 3/16" x 1/4" x 13/16"
5	50022442	1	Chain Guard RH (Not Shown)
	50022467	1	Chain Guard LH (Shown)
6	50019870	2	Rod End 5/8" Bore RH Thread
7	50022449	1	Brush Assy.
8A	50022465	1	Stabilizer Arm for RH Double Roller (Not Shown)
	50022466	1	Stabilizer Arm for LH Double Roller (Shown)
8B	50022473	1	Stay Rod Weld. (Single Roller)
9	50022501	1	Roller Chain #40
10	19455	1	Key, Square 1/4" x 7/8"
11	50022453	2	Side Plate
12	50019875	2	Spacer, Tie Rod
13	50022455	1	Spacer
14	50022456	1	Shield Disc
15	50022457	1	Spacer
16	50022458	1	Spacer
17	44094	2	HHCS 1/2" x 1-1/4" Gr5
18	20110	1	HHCS 1/2" x 2" Gr5
19	19065	1	HHCS 1/2" x 2-1/2" Gr5
20	44619	1	HHCS 3/8" x 3-1/4" Gr5
21	44319	5	Carriage Bolt 5/16" x 1" Gr5
22	44620	1	Carriage Bolt 1/2" x 2-1/2" Gr5
23	44181	1	HHCS 3/8" x 1-1/2" Gr8
24	44289	1	Carriage Bolt 1/2" x 2-1/2" Gr5
25	15528	2	Hex Nut 5/16"
26	8151600	4	Hex Nut 1/2"
27	15509	2	Hex Nut 5/8"
28	44553	4	Hex Nut, Nylock 5/16"
29	15808	4	Lockwasher 5/16"
30	15901	2	Flatwasher 5/16"
31	15830	1	Flatwasher 3/8"
32	15812	1	Lockwasher 3/8"
33	15806	4	Lockwasher 1/2"
34	15916	2	Flatwasher 1/2"
35	50022459	4	Compensator Spring
36	50022400	1	Sprocket 40B24 - 1" Bore
37	50022461	1	Sprocket 40B11- 7/8" Bore
38	50022462	1	Connector Link
39	50019860	1	Master Link #40
40	0461099	4	Flangette
41	50023545	2	Mount Bracket
42	1161020	2	HHCS 5-16" x 2" Gr5

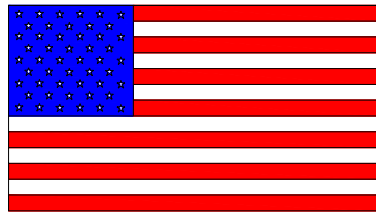


50026864 Chain and Binder Kit

REF. NO.	PART NO.	QTY	DESCRIPTION
1	50019919	1	Binder Assembly
2		1	Load Binder
3		1	Hook
4	50022010	1	Chain Weldment

Decals

Part No.	Qty No.	Description	Part No.	Qty No.	Description
	2	Model Decal (TRM 5138)		2	Model Decal (TRM 7192)
50022064	1	Caution Decal (540 RPM, Gearbox)	50022064	1	Caution Decal (540 RPM, Gearbox)
50022065	1	Danger Decal (PTO Shield)	50022065	1	Danger Decal (PTO Shield)
500033	5	Locke Decal	500033	5	Locke Decal
50022066	2	Danger Decal (Tongue)	50022066	2	Danger Decal (Tongue)
50022067	2	Decal, Flag (Tongue)	50022067	2	Decal, Flag (Tongue)
50022070	1	Warning Decal (Tongue)	50022070	1	Warning Decal (Tongue)
50022071	1	Warning Decal (Tongue)	50022071	1	Warning Decal (Tongue)
50022072	1	Danger Decal (PTO Shield)	50022072	1	Danger Decal (PTO Shield)
50022073	1	Warning Decal (Tongue)	50022073	1	Warning Decal (Tongue)
50022074	1	Notice Decal (PTO Shield)	50022074	1	Notice Decal (PTO Shield)
50022075	6	Danger Decal (Reel Head Shield)	50022075	6	Danger Decal (Reel Head Shield)
50022076	4	Caution Decal (Frame & Tire)	50022076	4	Caution Decal (Frame & Tire)
50022077	10	Danger Decal (Frame & Tire)	50022077	10	Danger Decal (Frame & Tire)
50022079	1	Caution Decal (Cylinder)	50022079	1	Caution Decal (Cylinder)
50022081	1	Notice Decal (Tongue)	50022081	1	Notice Decal (Tongue)
50022303	4	Caution Decal (Frame & Tire)	50022303	4	Caution Decal (Frame & Tire)
50031214	4	Red Reflector	50031214	4	Red Reflector
53315	4	Amber Reflector	53315	4	Amber Reflector





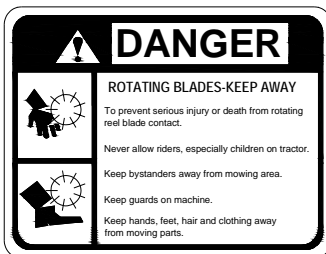
50022075



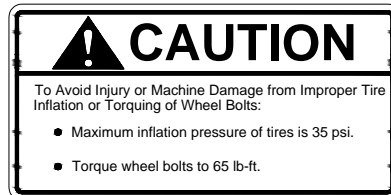
50022070



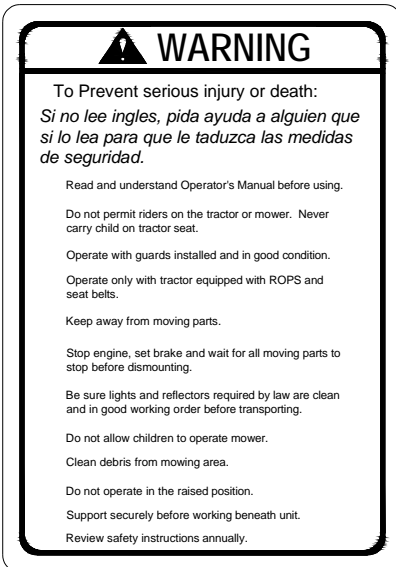
50022081



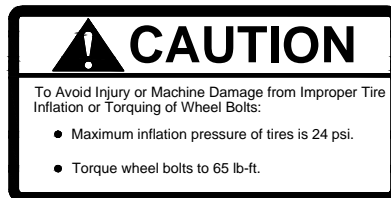
50022077



50022303



50022073



50022071

50022076

Red Reflector 53310



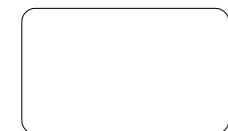
50022074



50022079



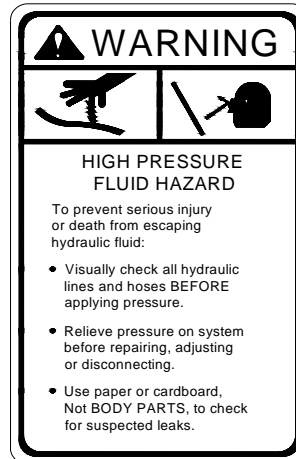
50022072



Amber Reflector 53315



Red Reflector 53316



50022071



Locke Turf

307 Highway 52E, Opp, Alabama 36467 (334) 493-1300