



Walker Sprayer



Operator and Parts Manual

Locke Turf

307 Highway 52E, Opp, Alabama, 36467, (334) 493-1300

CONGRATULATIONS

You have invested in the best implement of its type on the market today.

The care you give your Locke Turf implement will greatly determine your satisfaction with its performance and its service life. We urge a careful study of this manual to provide you with a thorough understanding of your new implement before operating, as well as suggestions for operation and maintenance.

If your manual should become lost or destroyed, Locke Turf will be glad to provide you with a new copy. Order from Locke Turf, 307 Highway 52E, Opp, Alabama 36467.

As an Authorized Locke Turf dealer, we stock genuine Locke Turf parts which are manufactured with the same precision and skill as our original equipment. Our trained service personnel are well informed on methods required to service Locke Turf equipment, and are ready and able to help you.

Should you require additional information or assistance, please contact us.

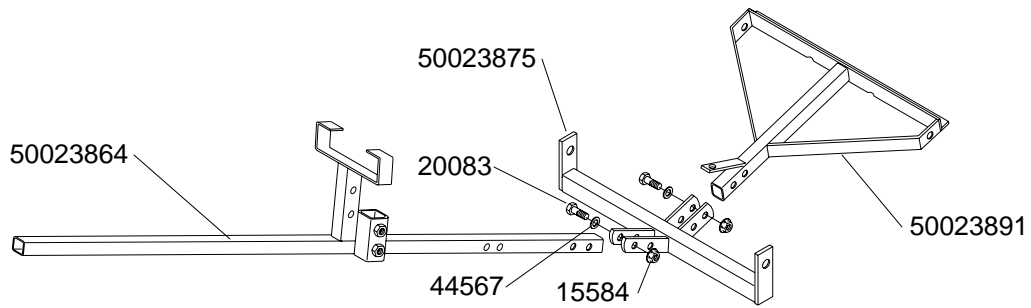
YOUR AUTHORIZED
LOCKE TURF DEALER

BECAUSE LOCKE TURF MAINTAINS AN ONGOING PROGRAM OF PRODUCT IMPROVEMENT, WE RESERVE THE RIGHT TO MAKE IMPROVEMENTS IN DESIGN OR CHANGES IN SPECIFICATIONS WITHOUT INCURRING ANY OBLIGATION TO INSTALL THEM ON UNITS PREVIOUSLY SOLD.

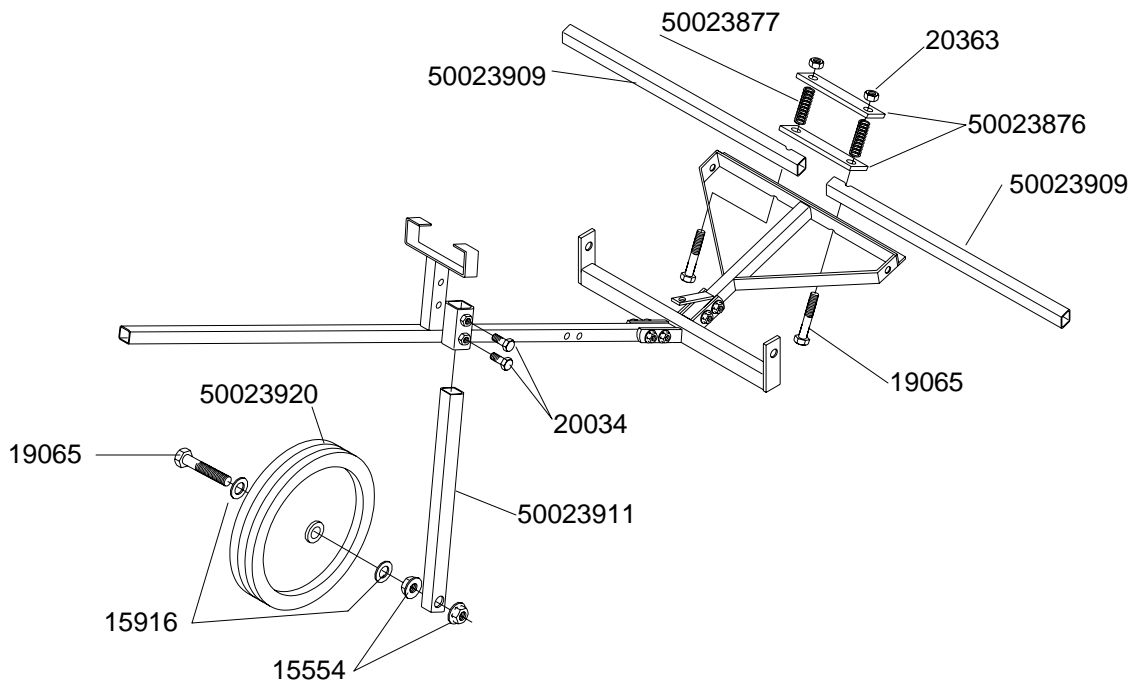
BECAUSE OF THE POSSIBILITY THAT SOME PHOTOGRAPHS IN THIS MANUAL WERE TAKEN OF PROTOTYPE MODELS, PRODUCTION MODELS MAY VARY IN SOME DETAIL. IN ADDITION, SOME PHOTOGRAPHS MAY SHOW SHIELDS REMOVED FOR PURPOSES OF CLARITY. **NEVER OPERATE** THIS IMPLEMENT WITHOUT ALL SHIELDS IN PLACE.

Assembly Instructions for the Walker Sprayer Boom

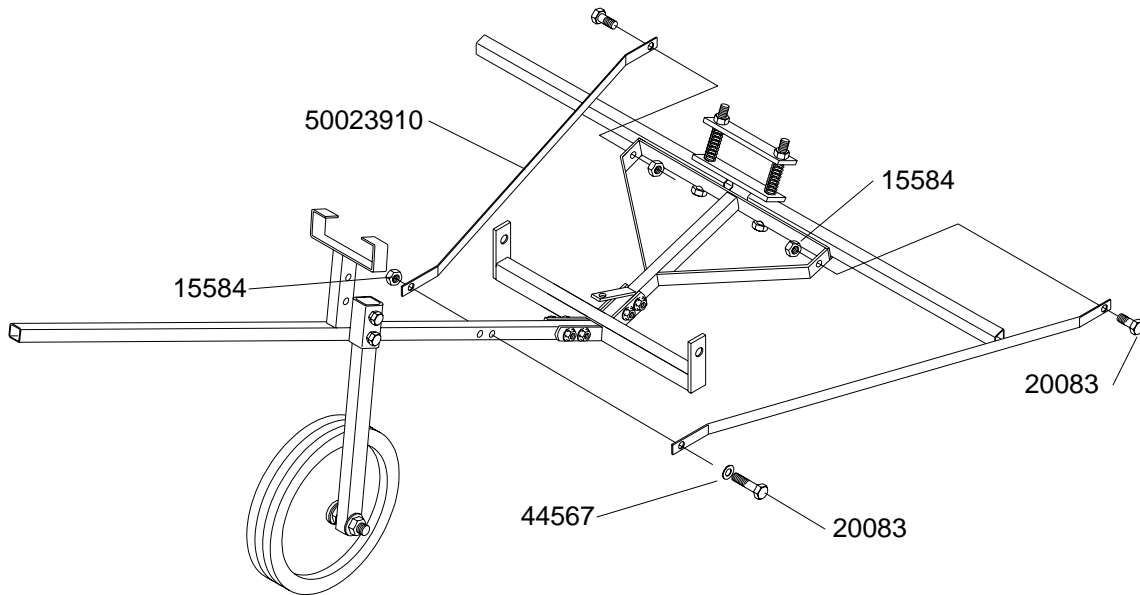
1. To assemble the sprayer frame, first locate Parts 50023875, 50023864, and 50023891. Line them up as shown below and connect using (4) Bolts 20083, (4) Washers 44567, and (4) Nuts 15584. You should find all fasteners in place on the various pieces.



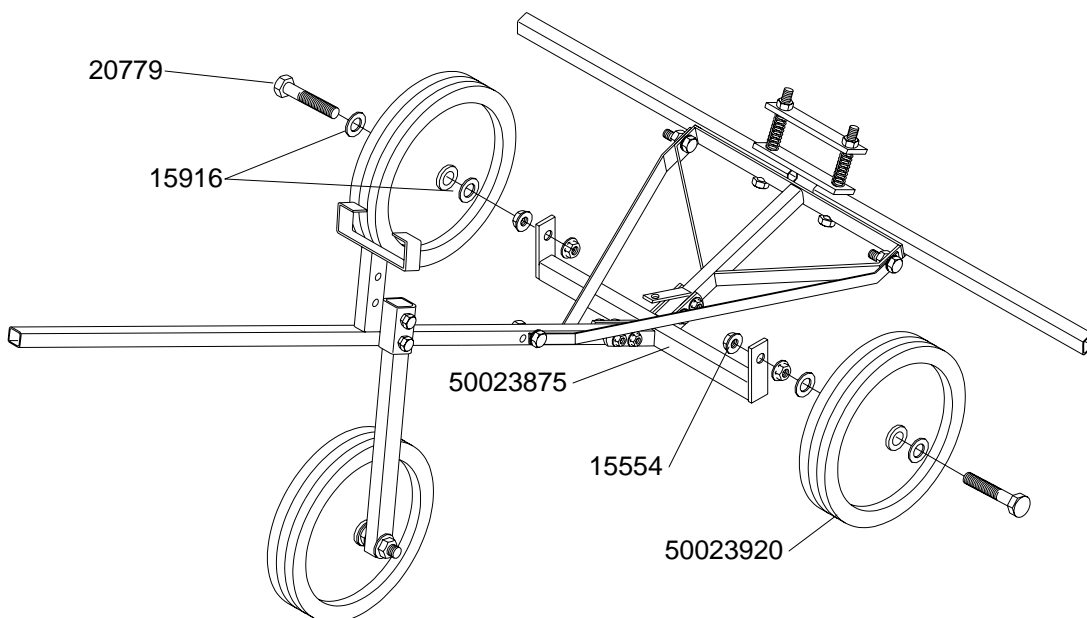
2. Place Boom Tubes 50023909 in position on frame and fasten using Bolts 44634, Spring Straps 50023876, Spring 50023877 and Nuts 20363. Connect Tire Assembly to Leg Tube 50023911 with Bolt 19065, Washers 15916 and Nuts 15554. Place Leg Tube 50023911 in Center Handle Weldment 50023864 and secure with (2) Bolts 20034.



3. Fasten Braces 50023910 to Center Handle Weldment 50023864 using Bolt 20083, Washer 44567 and Nut 15584. Fasten other end of Braces 50023910 to the Boom Arm Tube Weldment 50023891 using Bolts 1160806 and Nuts 15584.



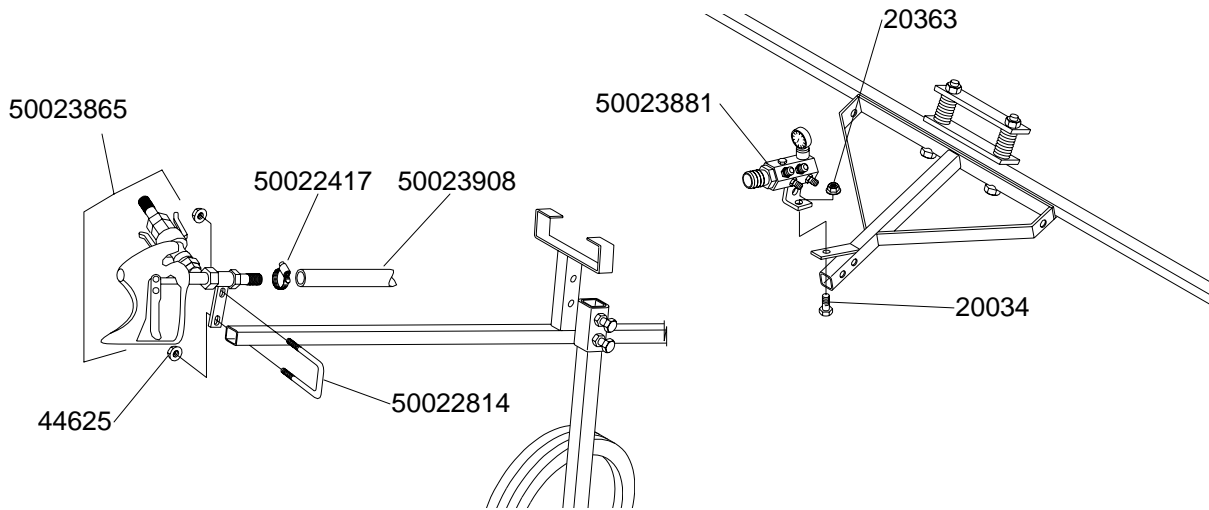
4. Finally to complete the frame install Tire Assemblies 50023920 to Axle Weldment 50023875 using Bolts 20779, Washers 15916 and Nuts 15554.



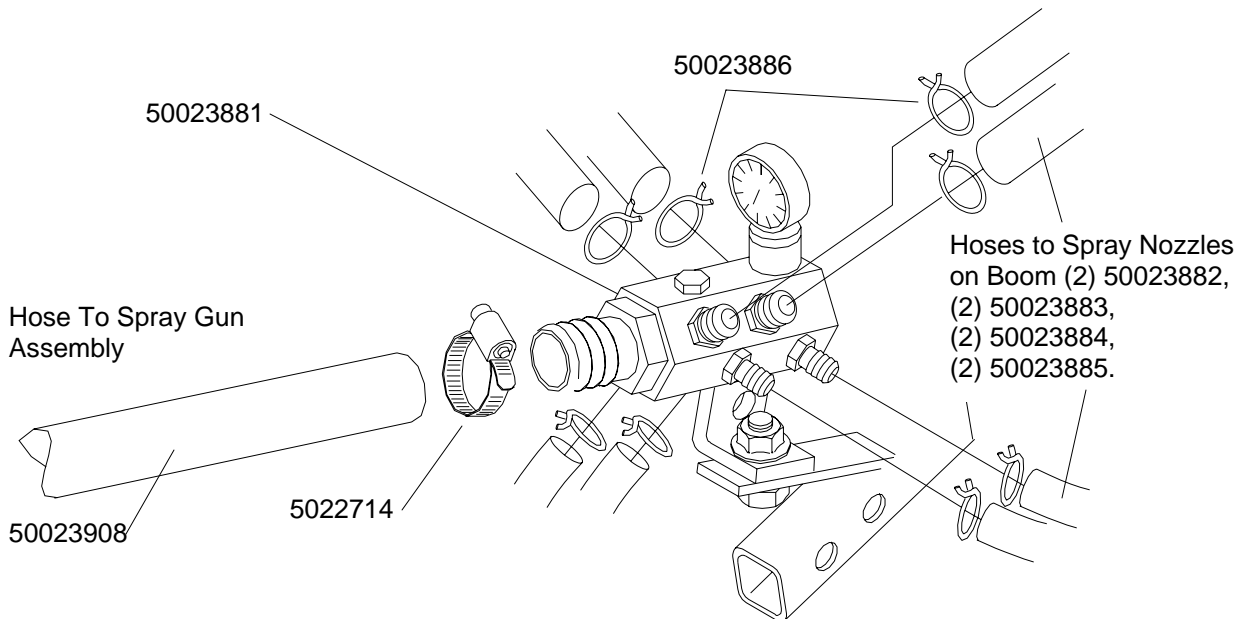
Hose Fittings and Nozzle Assembly

Note All Fittings, Manifold and Spray Nozzles should be preassembled at the factory, to see assembly, reference the parts callouts later in this manual.

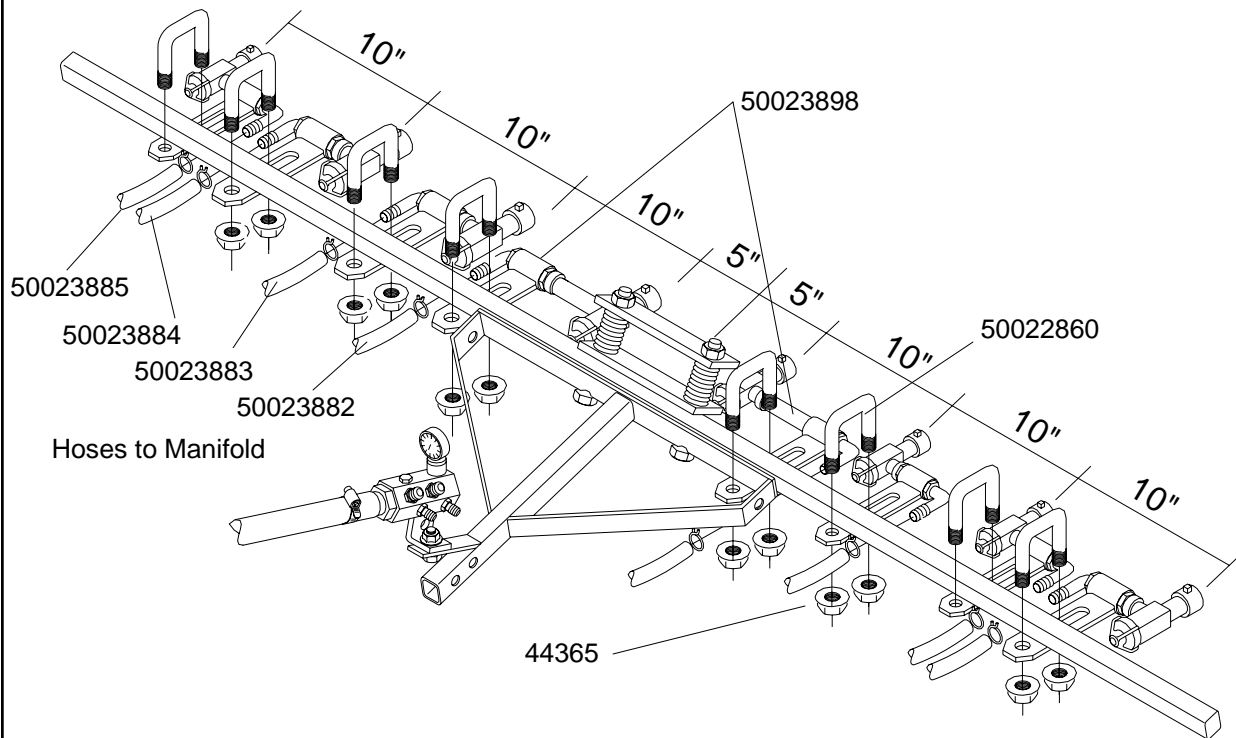
1. Connect Spray Gun Assembly 50023865 to Frame with U-Bolt 50022814 and Nuts 44625. Connect Hose 50023908 on Adapter and Tighten using Hose Clamp 50022714. Connect Manifold Assembly 50023881 to Frame using Bolt 20034 and Nut 20363.
2. Now connect all hoses to Manifold Weldment



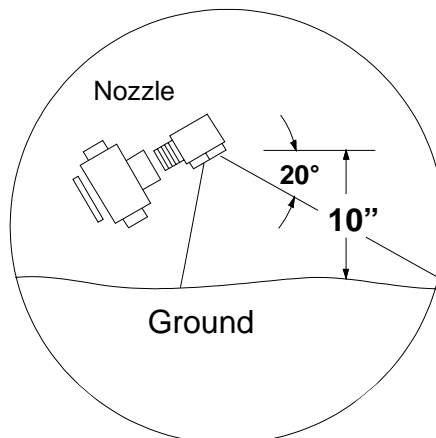
50023881. Be sure to secure Hose Clamp 50022714 and Wire Hose Clamp 50023886.



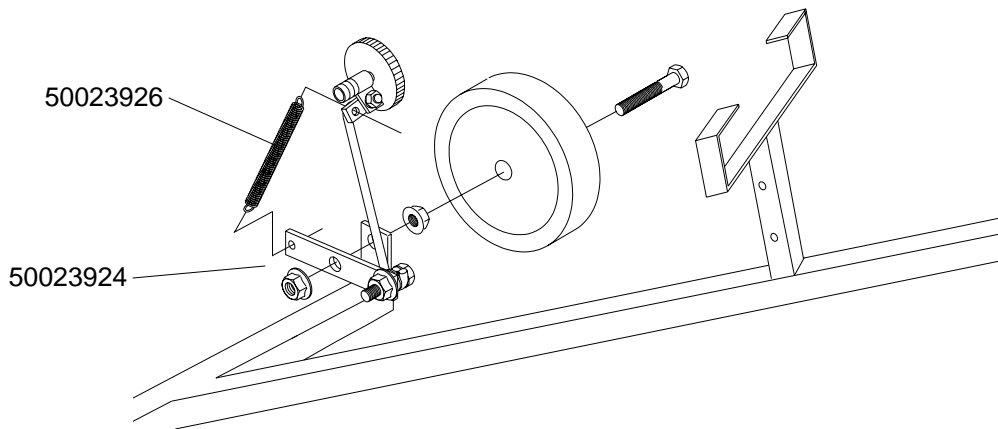
3. Fasten Spray Nozzle Brackets to Boom as shown . Note that the two (2) Inner Nozzle Brackets 50023898 are different from the rest. Fasten to the Boom using U-Bolts 50022860 and Nuts 44365. Consult diagram to check for Nozzle Bracket orientation and spacing. After all Brackets have been securely fastened, connect hoses from Manifold Weldment and secure with Wire Hose Clamps 50023886.



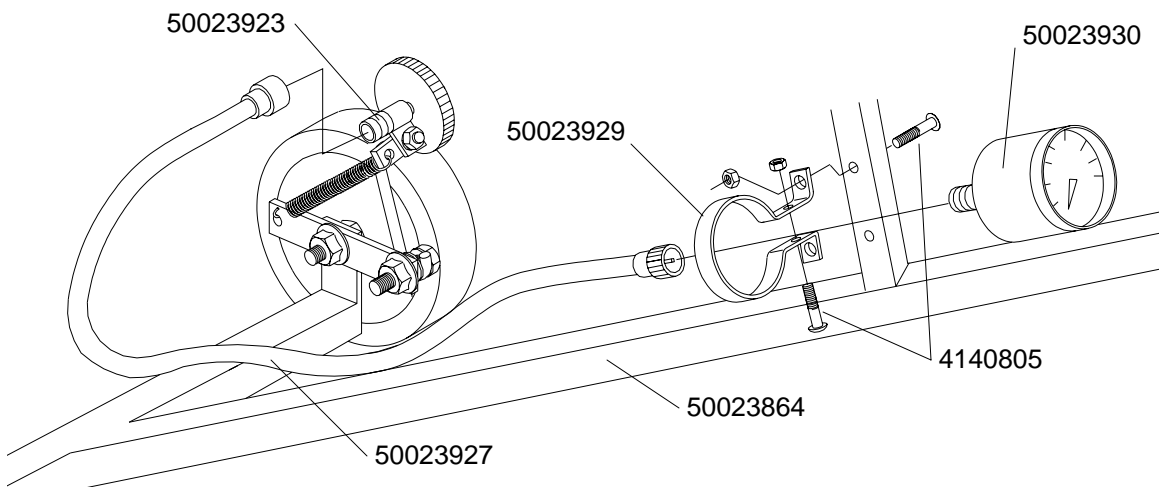
4. In order to have the proper spray pattern please reference the diagram below. The Nozzles need to be approximately ten (10) inches above the ground.

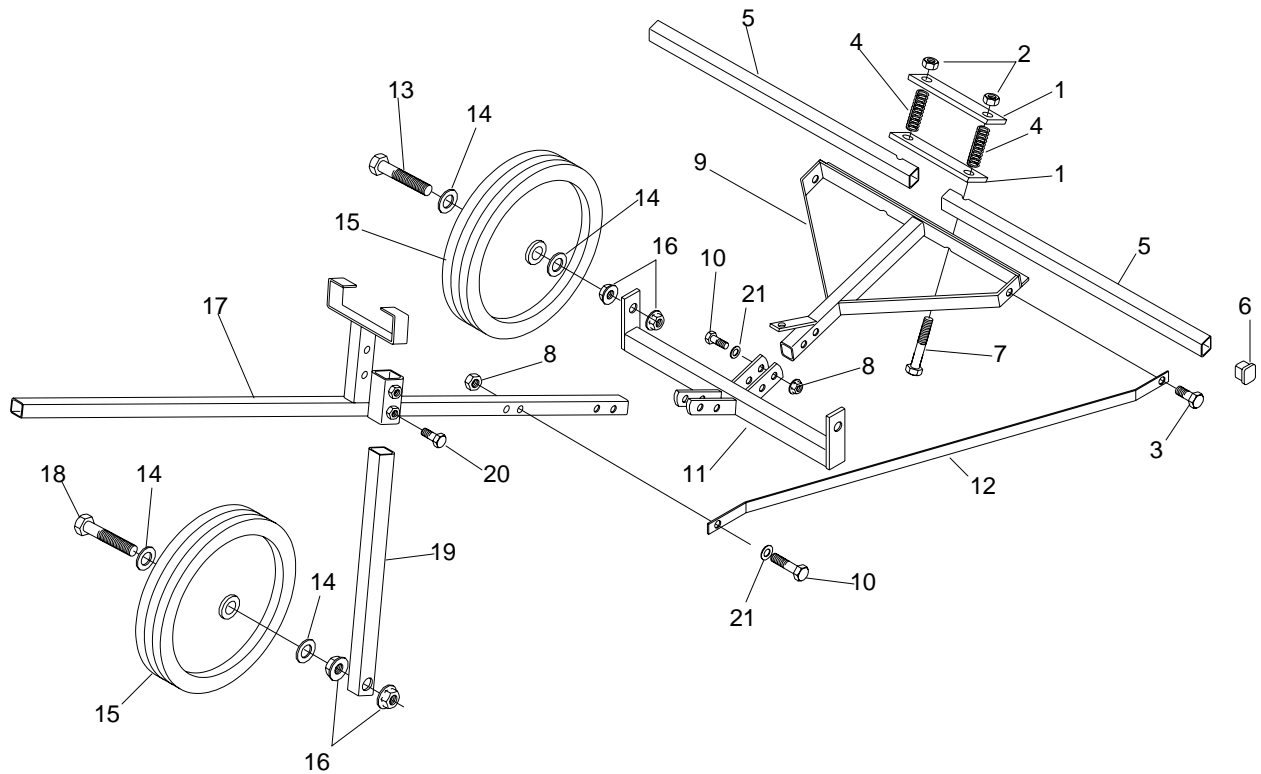


1. The Upper and Lower Brackets and Extension Rod should have been assembled at the factory if not see parts callout later in this manual. Fasten Upper and Lower Bracket Assembly to Axle Weldment with Bolt 20779 and Nuts 15554. Connect Extension Spring 50023926 to Upper Bracket 50023924 and Lower Bracket 50023928.



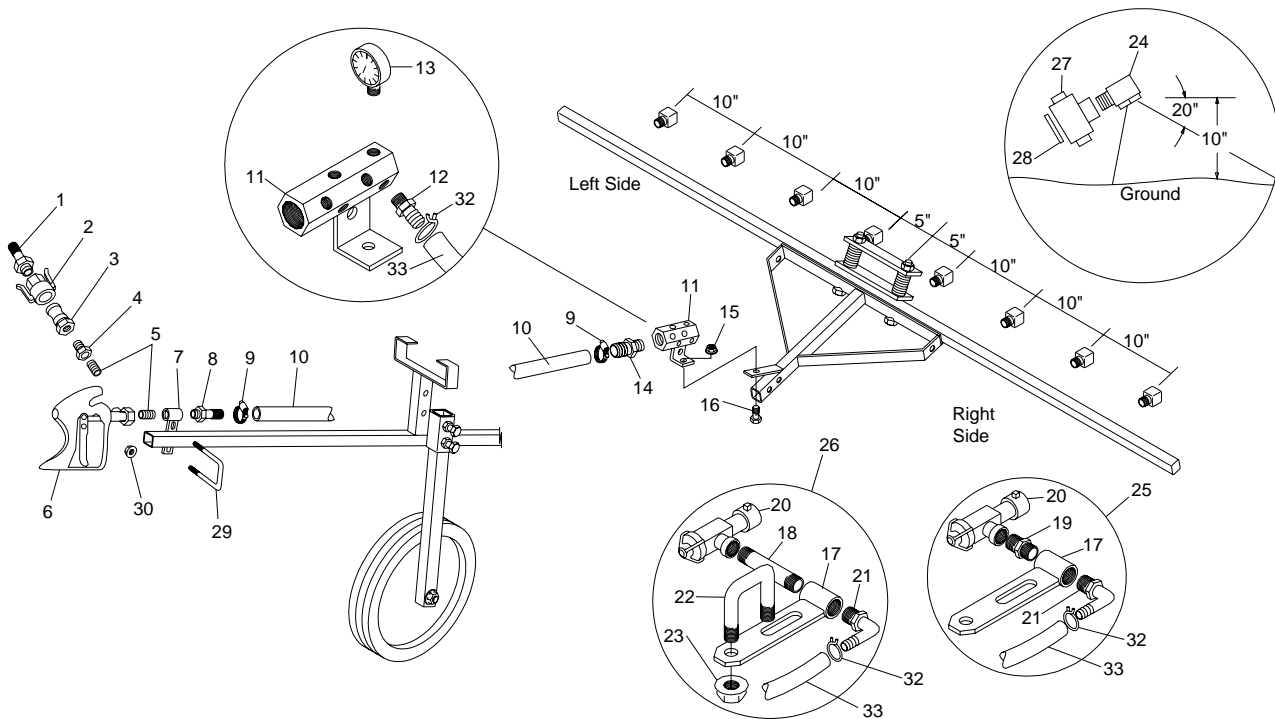
2. Insert Speedometer 50023930 into Bracket 50023929 and tighten with Machine Screw 4140805 and Nut 8150600. Mount Bracket 50023929 to Center Handle Weldment 50023864 with Machine Screws 4140805 and Nuts 8150600. Connect Flexible Shaft 50023927 to Speedometer 50023930 and Drive Assembly 50023923.





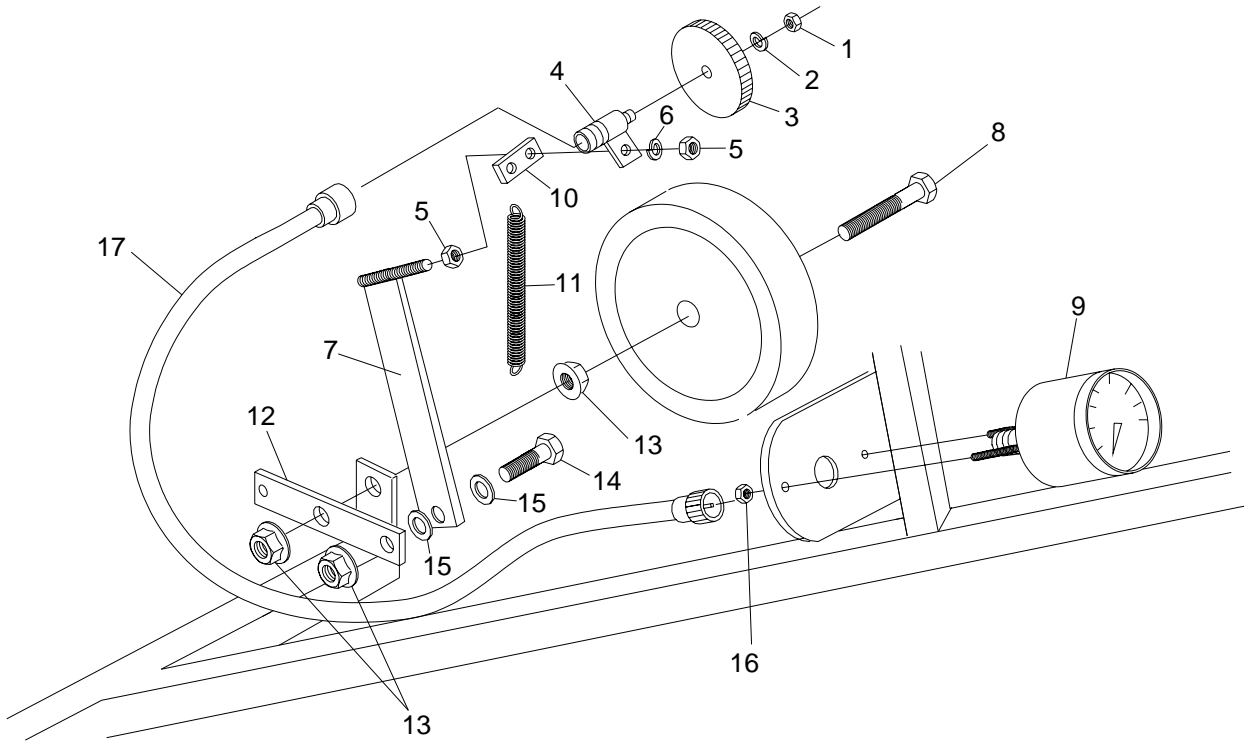
Frame & Mast Walking Boom

| REF. NO. | PART NO. | QTY | DESCRIPTION |
|----------|----------|-----|---------------------------------|
| 1 | 50023876 | 2 | Spring Strap |
| 2 | 20363 | 2 | Locknut 3/8" |
| 3 | 1160806 | 2 | HHCS 1/4" x 3/4" G5 |
| 4 | 50023877 | 2 | Spring, Compression |
| 5 | 50023909 | 2 | Boom Tube |
| 6 | 50022801 | 4 | Cap 1-1/4" Sq. |
| 7 | 44634 | 2 | HHCS 3/8" x 6" G5 |
| 8 | 15584 | 7 | Locknut 1/4" Flanged Whiz Nut |
| 9 | 50023871 | 1 | Boom Arm Tube Weld. |
| 10 | 20083 | 5 | HHCS 1/4" x 3-1/2" G5 |
| 11 | 50023875 | 1 | Axle Weld. |
| 12 | 50023910 | 2 | Brace |
| 13 | 20779 | 2 | HHCS 1/2" x 3-1/2" G5 |
| 14 | 15916 | 6 | Flatwasher 1/2" |
| 15 | 50023920 | 3 | Wheel & Tire Assy. 12" x 1-3/4" |
| 16 | 15554 | 6 | Locknut 1/2" Flanged Whiz Nut |
| 17 | 50023864 | 1 | Center Handle Weld. |
| 18 | 44833 | 1 | HHCS 1/2" x 4-1/2" G5 |
| 19 | 50023911 | 1 | Leg, Tube |
| 20 | 20034 | 2 | HHCS 3/8" x 1" G5 |
| 21 | 44567 | 2 | Flatwasher 1/4" |



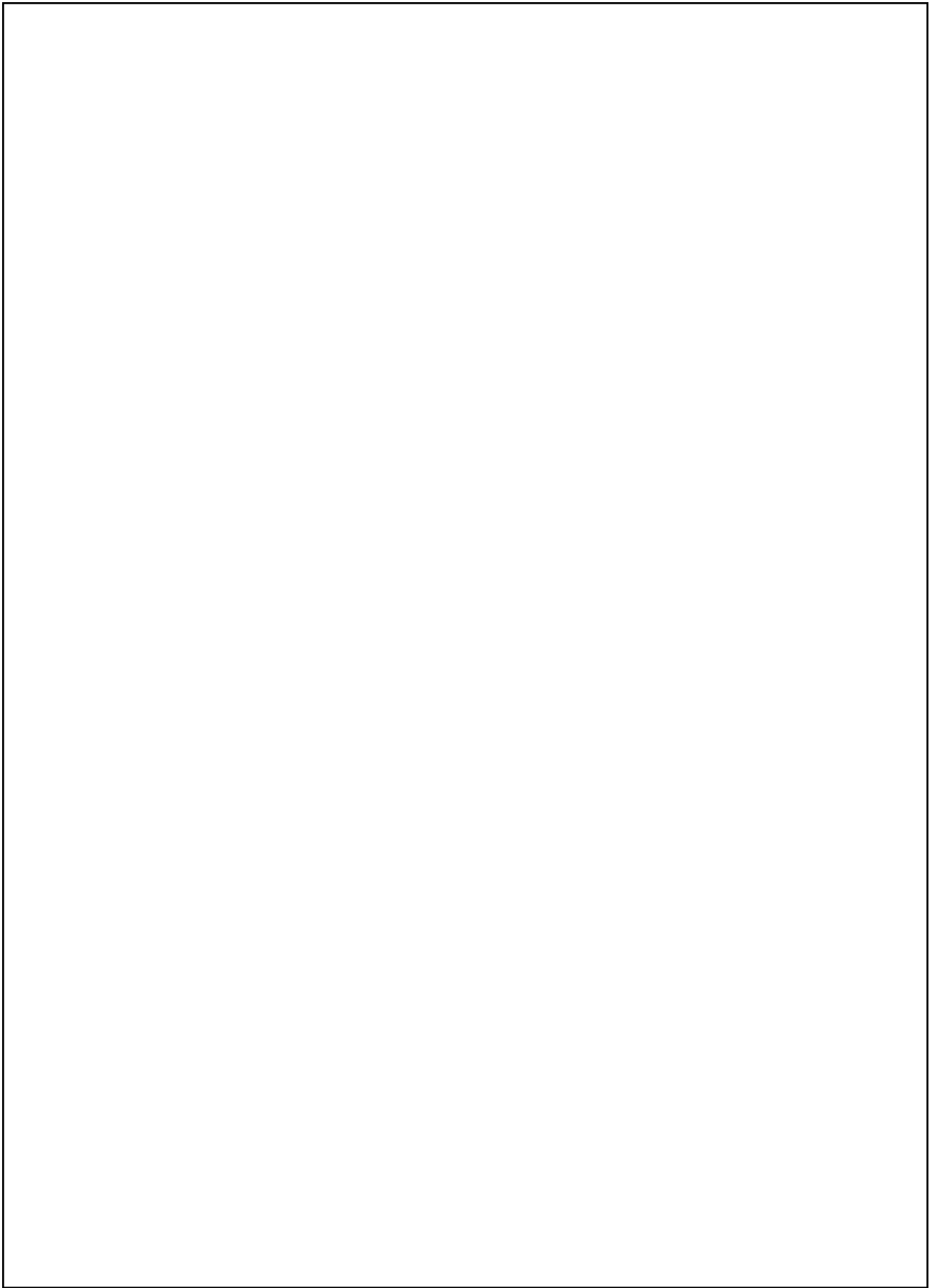
Walking Spray Attachment

| REF. NO. | PART NO. | QTY | DESCRIPTION | REF. NO. | PART NO. | QTY | DESCRIPTION |
|----------|----------|-----|-------------------------------------|----------|----------|-----|------------------------------|
| 1 | 50026375 | 1 | Adapter 3/4" MNPT to 1/2" HB | 19 | 50026358 | 6 | Nipple 1/4" |
| 2 | 50023905 | 1 | Adapter 3/4" FNPT to 3/4" QC Female | 20 | 50023892 | 8 | Side Port Check Valve |
| 3 | 50023904 | 1 | Adapter 3/4" FNPT to 3/4" QC Male | 21 | 50023893 | 8 | 90° Fitting 1/4" MNPT x 3/8" |
| 4 | 50023907 | 1 | Adapter 3/4" MNPT to 1/2" FNPT | 22 | 50022860 | 8 | U-Bolt 1/4" |
| 5 | 50023906 | 2 | Nipple 1/2" MNPT x 1-1/8" | 23 | 44365 | 16 | Locknut 1/4" |
| 6 | 50023865 | 1 | Spray Gun Assy. | 24 | 50026248 | 8 | Nozzle MC 2.5 SS |
| 7 | 50023903 | 1 | Coupler Weld | 25 | 50023897 | 6 | Mount Bracket Assy. |
| 8 | 50023751 | 1 | Adapter 1/2" MNPT to 3/4" HB | 26 | 50023898 | 1 | Mount Bracket Center Assy. |
| 9 | 50022714 | 3 | Hose Clamp | 27 | 50023895 | 8 | Outlet Adapter |
| 10 | 50023908 | 1 | Hose 3/4" x 44" | 28 | 50023896 | 8 | Seat Gasket |
| 11 | 36900140 | 1 | Manifold Weld. | 29 | 50022814 | 1 | U-Bolt 5/16" |
| 12 | 50023888 | 8 | Adapter 1/4" MNPT to 3/8" HB | 30 | 44625 | 2 | Hex Nut 5/16" Locknut |
| 13 | 50023917 | 1 | Pressure Gauge 0-100 PSI | 31 | 50023919 | 1 | Gauge & Protector Assy. |
| 14 | 50023753 | 1 | Adapter 3/4" MNPT to 3/4" HB | 32 | 50023886 | 16 | Wire Hose Clamp |
| 15 | 20363 | 1 | Locknut 3/8" | 33 | 50023882 | 2 | Hose 3/8" x 24" |
| 16 | 20034 | 1 | HHCS 3/8" x 1" G5 | | 50023883 | 2 | Hose 3/8" x 26" |
| 17 | 50023891 | 8 | Nozzle Mount Bracket Weld. | | 50023884 | 2 | Hose 3/8" x 36" |
| 18 | 50023894 | 2 | Nipple 1/4" x 3" | | 50023885 | 2 | Hose 3/8" x 46" |



Low Speed Speedometer Kit

| REF. NO. | PART NO. | QTY | DESCRIPTION |
|----------|-----------|-----|-----------------------|
| 1 | 15501 | 1 | Hex Nut 5/16" |
| 2 | 15808 | 1 | Lockwasher 5/16" |
| 3 | 50023922 | 1 | Travel Wheel |
| 4 | 50023923 | 1 | Drive Assy. |
| 5 | 44639 | 2 | Hex Nut 3/8" |
| 6 | 15812 | 1 | Lockwasher 3/8" |
| 7 | 50023925A | 1 | Extension Rod |
| 8 | 50023929 | 1 | HHCS 1/2" X 4-1/2" G5 |
| 9 | 50023930 | 1 | Speedometer 0-10 mph |
| 10 | 50023924 | 1 | Bracket (Short) |
| 11 | 50023926 | 1 | Spring, Extension |
| 12 | 50023928 | 1 | Bracket, (Long) |
| 13 | 20363 | 1 | Locknut 3/8" |
| 14 | 1161212 | 1 | HHCS 3/8" x 1-1/4" |
| 15 | 15830 | 2 | Flatwasher 3/8" |
| 16 | 8150600 | 2 | Hex Nut #10" |
| 17 | 50023927 | 1 | Flexible Shaft |





Locke Turf

307 Highway 52E, Opp, Alabama, 36467, (334) 493-1300