

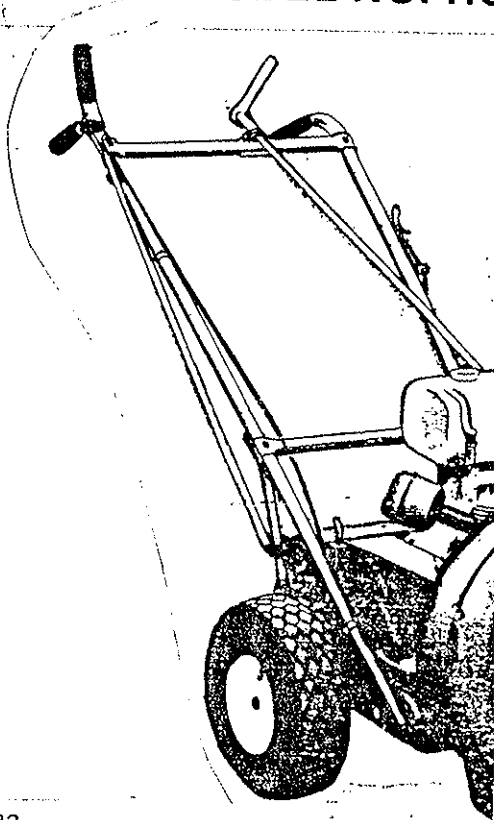
# OWNER'S GUIDE



# Parker®

## SELF-PROPELLED HURRICANE®

MODEL NO. HC-8380-K-SP



AF-483

**YOUR SAFETY IS OUR CONCERN. READ AND OPERATE THIS EQUIPMENT. FAILURE TO READ AND OPERATE THIS EQUIPMENT. FAILURE TO READ AND OPERATE THIS EQUIPMENT MAY**

### ADDENDUM TO OWNER'S GUIDE FOR HC-8380-K-SP

AS AN ONGOING POLICY OF PRODUCT IMPROVEMENT, ADDITIONS AND/OR CHANGES HAVE BEEN MADE TO THIS UNIT THAT ARE NOT COVERED IN THE ATTACHED OWNER'S GUIDE.

A Fan Spacer has been added between the Fan and Engine Pulley. If replacement parts are needed it can be purchased as; Spacer, Part No. 88-153-A, and a quantity of one is used.

Because of this addition it is also necessary to change the Bolt securing Fan to Engine. Refer to item 26 on Plate No. 982 in the Owner's Guide. This is now 60-716-24; Bolt, Hex Hd. 7/16-20 x 1 1/2. Quantity used and specified Torque remain the same.

Retain this copy, as it is the only record of the part numbers and description of these changes.

**READ THESE INSTRUCTIONS  
BEFORE SETTING UP AND OPERATING MACHINE**

PARKER SWEEPER COMPANY    Box 1728    Springfield, Ohio 45501-1728

## TO THE OWNER

These instructions were written to assist you in the assembly and operation of your Hurricane. **READ THE INSTRUCTIONS** thoroughly **BEFORE** attempting to assemble and operate the machine so that you are familiar with the complete procedure and the safety precautions.

### RULES FOR SAFE OPERATION



The following safety precautions are suggested to prevent damage to the equipment or injury to the operator or nearby persons.

1. **TO PREVENT ACCIDENTAL STARTING ALWAYS REMOVE THE SPARK PLUG** before working on the engine or equipment driven by the engine.
2. **DO NOT RUN THE ENGINE IN AN ENCLOSED AREA.** Exhaust gases contain carbon monoxide which is an odorless and deadly poison.
3. **DO NOT FILL GASOLINE TANK WHILE ENGINE IS HOT OR RUNNING.** Spilling gasoline on a hot engine may cause a fire or explosion.
4. **DO NOT** leave machine unattended while running.
5. **DO NOT ALLOW** machine to blow in direction of people or objects that could be injured by blown materials.
6. **AVOID** operating machine in dangerous places where steep slopes or loose debris will endanger the safety of operator or other people.

### LUBRICATION

The only lubrication necessary is a couple drops of light oil on the throttle control lever and throttle wire where it enters the cable, also on the moving parts on the exhaust deflector. Lubricate the wheel bearings and wheel axle once a week if used daily.

### OPERATING INSTRUCTIONS

1. Before starting the engine, read the Operating and Maintenance Instruction Manual. Add proper gasoline and oil to correct level.
2. Engine should be "broken in" by running at 1/2 throttle for 30 minutes and full throttle for an additional 30 minutes.
3. Machine will operate effectively by either pushing or pulling.
4. For moving heavy debris such as sticks, cleaning out flower beds, anything heavier than leaves, use the deflector in the down position.
5. For controlled blowing of leaves into windrows use the deflector in the up position.

## IMPORTANT

**ALWAYS GIVE THE FOLLOWING INFORMATION WHEN ORDERING REPAIR PARTS:**

- |                               |                           |
|-------------------------------|---------------------------|
| 1. Part Number (Not Ref. No.) | 3. Description of Part    |
| 2. Quantity Needed            | 4. Model No. of Hurricane |

If unable to obtain parts locally, write down above information and send to:  
**PARKER SWEEPER CO., BOX 1728, SPRINGFIELD, OHIO 45501**

# ASSEMBLY INSTRUCTIONS

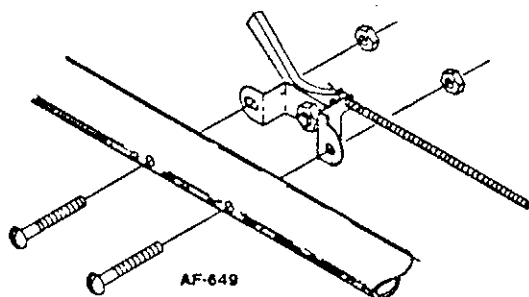
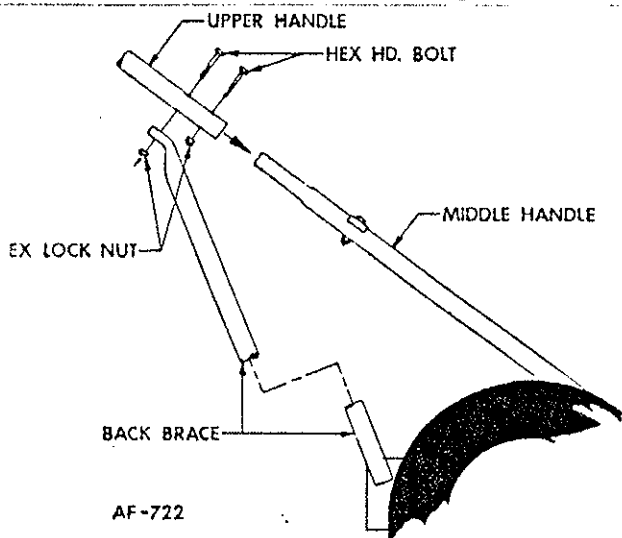
OBSERVE SAFETY RULES AT ALL TIMES. DON'T TAKE CHANCES!

## UNPACKING UNIT

1. Remove all loose items from carton.
2. Do not discard the carton or inserts until the unit is completely assembled.
3. Whenever the terms left or right hand, or "L" and "R", are used, it means from a position standing behind the unit facing forward. All hardware is on the unit in its proper location.

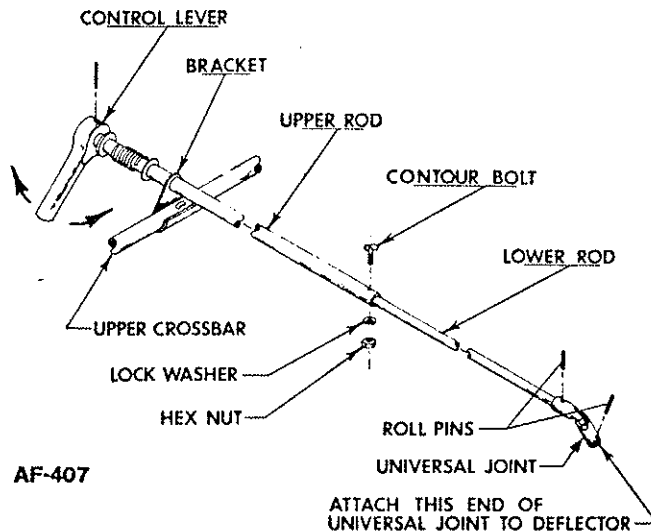
## ASSEMBLING HANDLES

1. Remove the hex lock nuts and hex hd. bolts from lower holes in upper handle assembly.
2. Place upper handle assembly down over ends of middle handles.
3. Align holes in upper handle assembly with those in middle handles, replace hex hd. bolts, only, through holes.
4. Assemble one nut to the bolt in the lower hole on each side, Tighten nut.
5. Lift handle assembly until back braces can be assembled to the bolts in upper holes and assemble hex lock nuts, Tighten nuts.



## CONTROL ROD CONNECTION

1. Remove the contour hd. bolt, lockwasher and hex. nut from the end of the upper control rod.
2. Telescope the lower and upper control rods together.
3. Add the contour hd. bolt, lockwasher and hex nut back to the control rods.



NOTE: Nuts should be tightened enough that at least two of the Bolt threads extend through the Nut. It may be necessary to collapse the tubing SLIGHTLY to accomplish this.

## THROTTLE HOOKUP

1. To install the throttle control, remove it from the lower right hand handle.
2. Straighten the throttle cable out and run it up the left hand handle.
3. Attach the throttle control to the upper left hand handle with the two oval head screws and hex nuts furnished.
4. Make sure no sharp bends are in the line.

**SAFETY IS IMPORTANT!**  
**DO NOT IGNORE IT — OBSERVE IT!**  
**BE SAFE!**



# OPERATING INSTRUCTIONS

**NOTE: FAILURE TO OBSERVE SAFETY INSTRUCTIONS MAY RESULT IN SERIOUS INJURY.**

## To Start Unit

**NOTE:** Transmission has five forward speeds.

1. Transmission **MUST** be in **NEUTRAL** to start.
2. Move **SAFETY STOP** switch to **ON** position. After engine has started, release the **BRAKE** by twisting lever and letting it slide down.
3. Transmission used on this equipment is a tractor type (not automotive). The operator does not have to start in first gear and shift on up to gear required, he can go directly into the gear needed. It is also important to understand that the gears are designed to go into mesh (into gear) only when not turning. De-clutching (releasing clutch handle) is required at all times when gear selection occurs. Never shift on hills or inclined surfaces.
4. The operator should not shift with the unit under heavy load. In no case should an operator shift from first to neutral, from reverse to neutral, or from neutral to first or reverse, without de-clutching.

Engine crankcase is to be filled with the proper type and amount of oil.

**NOTE:** Do not operate the machine without first releasing the parking brake. To fail to do so places an undue strain on the transmission and may cause premature failure.

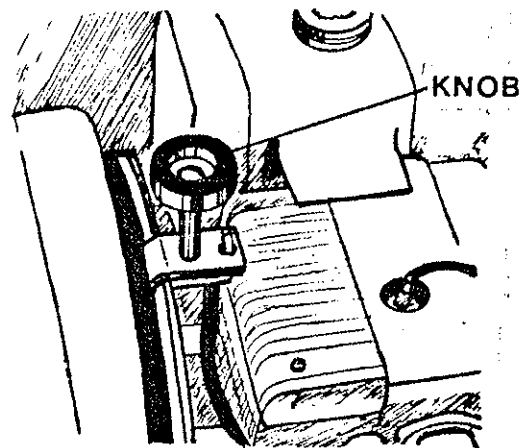
## Clutch Operation

1. The unit is equipped with a "Dead Man" clutch. When the transmission is put in gear, and the clutch is depressed and held in the down position the unit will move. The unit will stop moving when the clutch is released.
2. **TO STOP UNIT, PLACE GEAR SHIFT LEVER IN NEUTRAL, and move SAFETY STOP switch to OFF position. Pull up and twist brake lever 1/4 turn to lock in brake position. This brake is to be used as only a parking brake.**

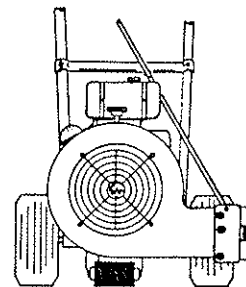
## Blower Adjustment "Hi or Low"

When adjusting the blower housing to **HI** or **LOW BLOW**, engine must be stopped with the spark plug wire disconnected.

1. To adjust the blower housing to a desired position, turn the knob counter-clockwise to loosen.
2. Pivot the exhaust deflector to the desired position, and tighten the knob.
3. It is not necessary to detach the exhaust deflector control rod assembly. It will pivot with the blower housing to any position.
4. By turning the lever on the control rod assembly fastened to the upper cross bar, the deflection angle can be changed to control the air flow from the exhaust deflector.



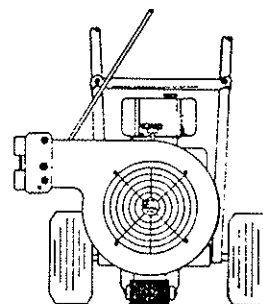
AF-293



AF-477

Blower housing in the Low Blow position.

Blower housing in the Hi Blow position.



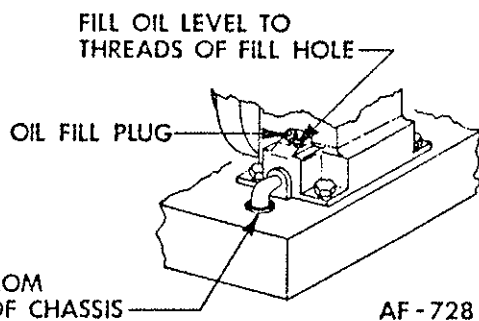
AF-478

# READ SAFETY AND OPERATING INSTRUCTIONS BEFORE OPERATING EQUIPMENT

## Engine Care:

1. Refer in Engine Manufacturers Service Manual. Careful attention to care of air cleaner and crankcase lubrication instructions will insure longer engine life. **KEEP ENGINE CLEAN.**
2. **KOHLER ENGINES.** The stop switch is located on the handle and on the lower left side of the engine below the exhaust.
3. **CAUTION:** When refueling engine care should be taken not to spill fuel on hot engine. This could cause the fuel to ignite, resulting in serious injury to operator or damage to unit.

**IMPORTANT WARNING:** The engine contains NO OIL. Read the Engine Instruction Manual carefully before operating. Be sure you know how to start and stop the engine before proceeding further. Do not start the engine until all assembly is finished.

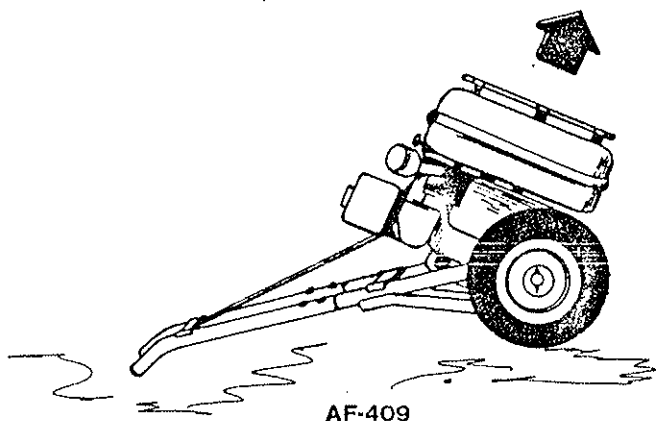


**CAUTION:** Before starting to work on the Engine or the equipment driven by the Engine, always remove the spark plug to prevent accidental starting.

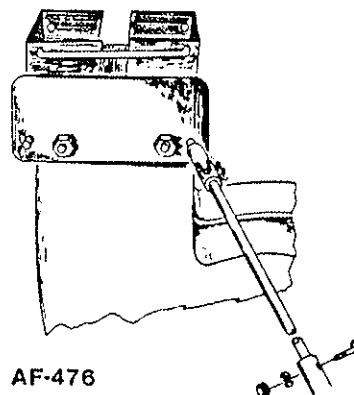
## INSTRUCTIONS FOR REMOVING OR INSTALLING THE BLOWER HOUSING

### To Remove the Blower Housing:

1. Push the handle of the Hurricane down until the handle is resting on the ground.



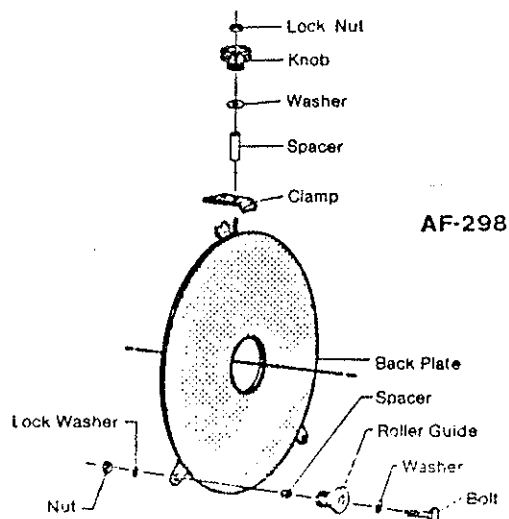
2. Remove the contour head bolt, hex. nut and lock washer, holding the upper and lower control rods, for the deflector, together.



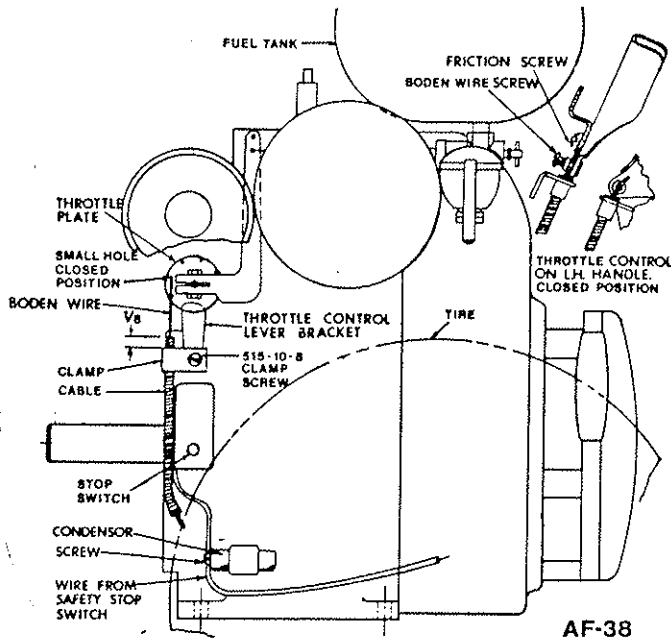
3. To loosen the top of the blower housing, remove the lock nut, knob, washer, spacer and clamp.
4. To loosen the bottom of the blower housing, remove the nuts on each side.
5. Remove the lock washers and pull out the roller guides bringing the bolts, washers and spacers with them.
6. Remove the blower housing by lifting it off the fan.

### To Install the Blower Housing:

1. Place the blower housing over the fan and position the pivot ring against the back plate.
2. Re-insert the bolts with the roller guides, washers and spacers, in the order shown below.
3. Add the washer, nut, and tighten.
4. At the top of the housing, replace the clamp, spacer, washer, knob and lock nut.



**CAUTION:** Pull the recoil starter cord to rotate the fan, to make sure the fan rotates freely. Replace the ignition wire on the spark plug.



### Kohler Engine Throttle Hook-up to Engine

1. Loosen clamp screw and slip cable through clamp on left side of the screw.
2. Insert end of wire into small hole in throttle control lever in closed position. The cable is attached to the throttle control lever bracket.
3. At the lower end of throttle assembly, insert end of wire into small hole in throttle lever on engine as shown.
4. With about 1/8 inch of cable extending beyond clamp, tighten screw.
5. Check travel of throttle lever and adjust as follows: With the throttle lever on engine in the closed position, the lever on handle should be as shown.
6. Next, tighten boden wire nut on throttle lever to prevent slipping on throttle wire. Throttle assembly is now ready to test.

**NOTE:** If throttle does not stay open due to vibration of machine, tighten friction screw on lever assembly until there is sufficient friction to hold throttle open.

### WARRANTY INFORMATION

Parker Sweeper Company warrants each new piece of equipment manufactured under its name except (engines, transmissions, differentials or regulators where applicable) to be free from defects in materials and workmanship under normal use and service. Parker Sweeper Company's obligation is limited to repair or replacement, at its option for one (1) year (ninety (90) days for commercial service) from date of purchase.

If trouble should occur with your engine, transmission, or differential please contact the companies listed below, giving them all important information: Name of unit purchased from company (HC-8380-K, etc.), problem with engine, etc.; when unit was purchased; model number of transmission or engine, etc., and your complete return address with zip code. Failure to provide complete information will result in unnecessary delay of repair and return of unit. The following is a list of companies who supply us with various products. Please contact the companies directly at the address listed if any problems should occur.

All parts listed are under the manufacturer's name and part number. Replacement parts should be purchased directly from each company listed with a complete description of the part and part number. Addresses of manufacturers who stock parts are listed below.

Parts listed under the standard Parts can be purchased from most hardware stores.

### ENGINES:

Kohler Co.  
Kohler, Wisconsin 27249

### TRANSMISSION & DIFFERENTIAL

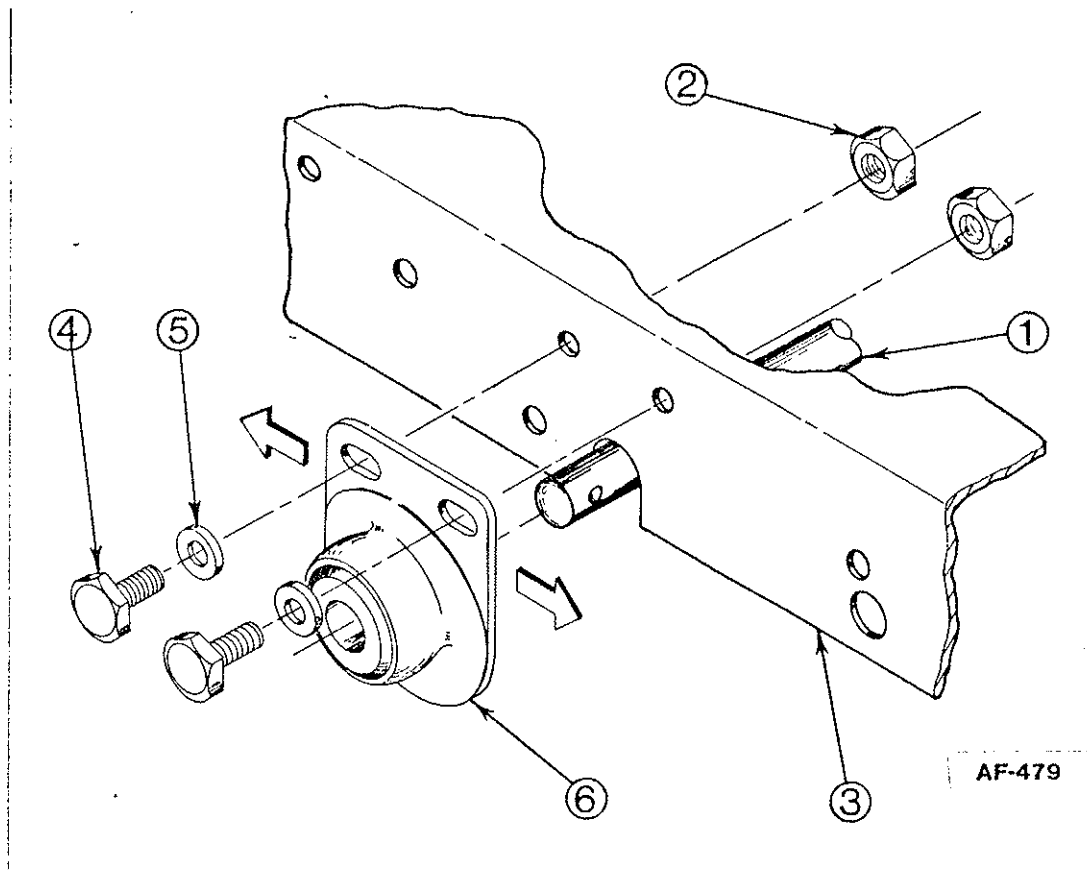
Peerless Gear & Machine Division  
P.O. Box 620  
Clinton, Michigan 49236-0620

**BE SAFE. PROTECT YOUR FAMILY,  
YOUR FRIENDS, YOURSELF.  
OBSERVE ALL SAFETY INSTRUCTIONS.**

## CHAIN ADJUSTMENT, DIFFERENTIAL

To adjust chain, set chassis upon 2"x4" or equivalent. At the ends of the axle remove cotter pin, and clevis pin. Pull wheels off the axle. The axle bearings are now accessible for adjustment. With 9/16 wrench loosen the nuts holding the bearings on both sides of the machine.

To tighten chain, push the axle forward. Make sure that the bearings are moved forward the same amount on both sides. The same amount of the slot should be visible on the bearings on both sides. Tighten the nuts with a wrench. Slide the wheels onto the axles and reinsert the clevis and cotter pin. If chain needs to be loosened repeat same procedure only pulling axle back just slightly.

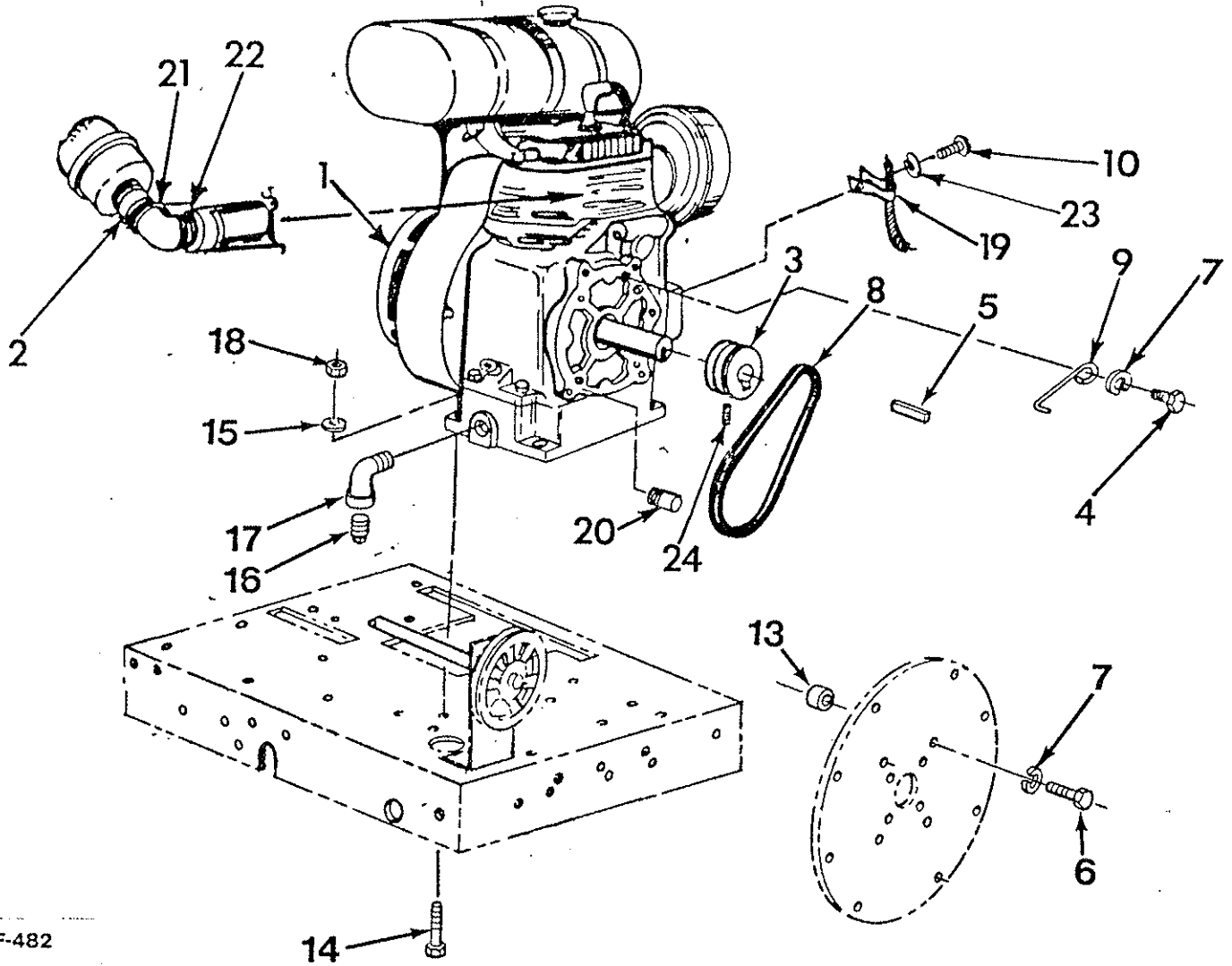


### PARTS LIST

Ref. No.	Description
1	Differential Assy.
2	Nut, 3/8-16 Hex. Lock
3	Chassis
4	Bolt Hex. Hd., 3/8-18 x 1
5	Washer, Flat Special 3/8
6	Bearing Assembly Modification



KOHLER ENGINE ASSEMBLY



AF-482

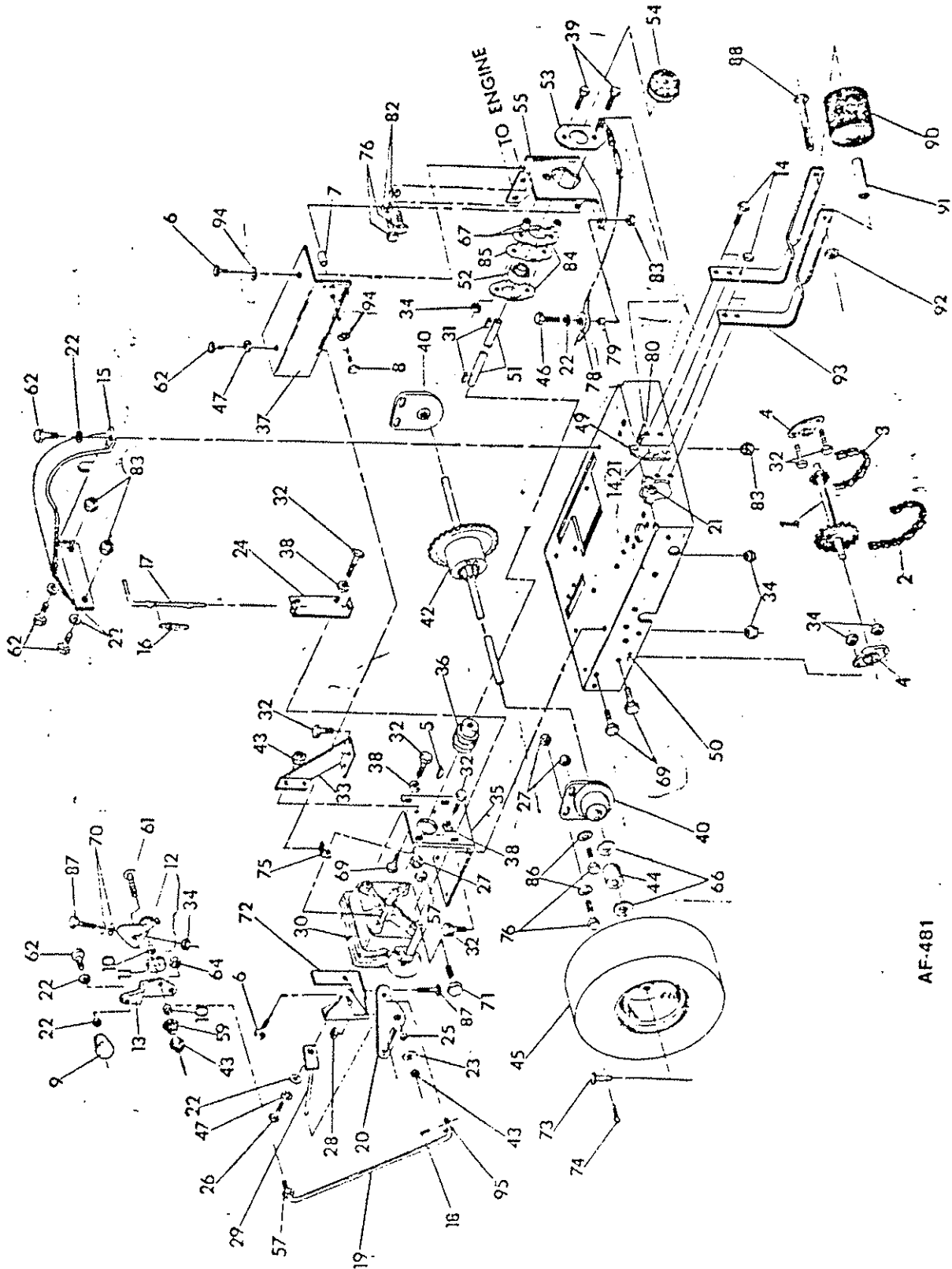
PARTS LIST

Ref. No.	Part No.	Description	Qty. Per Unit	Ref. No.	Part No.	Description	Qty. Per Unit
1	*	Engine, Kohler	1	14	65-616-20	Bolt, Hex. Hd., 3/8-16 x 1 1/4	4
2	67-68-A	Pipe Nipple, 1 x 4	1	15	945-616	Flat Washer, 3/8	4
3	81-61-A	Pulley, Engine	1	16	**	Pipe Plug, Oil Drain	1
4	65-616-12	Bolt, Hex. Hd., 3/8-16 x 3/4	1	17	57-81-A	Street Elbow, 1/2 x 90°	1
5	74-112-A	Fan Key 1/4 x 1/4 x 2 1/2	1	18	365-616	Lock Nut, Hex. Hd., 3/8-16	4
6	65-616-24	Bolt, Hex. Hd., 3/8-16 x 1 1/2	4	19	75-115-A	Throttle Cable Clip	1
7	935-616	Lock Washer, Spring, 3/8	5	20	81-32-A	Belt Popper	1
8	73-417-A	V Belt 3L-210	1	21	69-125-A	Street Elbow 1 x 45°	1
9	81-33-A	Belt Popper	1	22	73-240-A	Conduit Locknut 1"	1
10	515-8-8	Screw, Rd. Hd., 8-32 x 1/2	1	23	935-8	Lockwasher, Spring #9	1
13	79-139-A	Spacer, Back Cover	4	24	564-C-416-8	Set Screw, Allen Hd.	1

\*Kohler Model No. K-181-T, Spec. 30814

\*\*Supplied with Engine

CHASSIS & DRIVE ASSEMBLY



AF-481

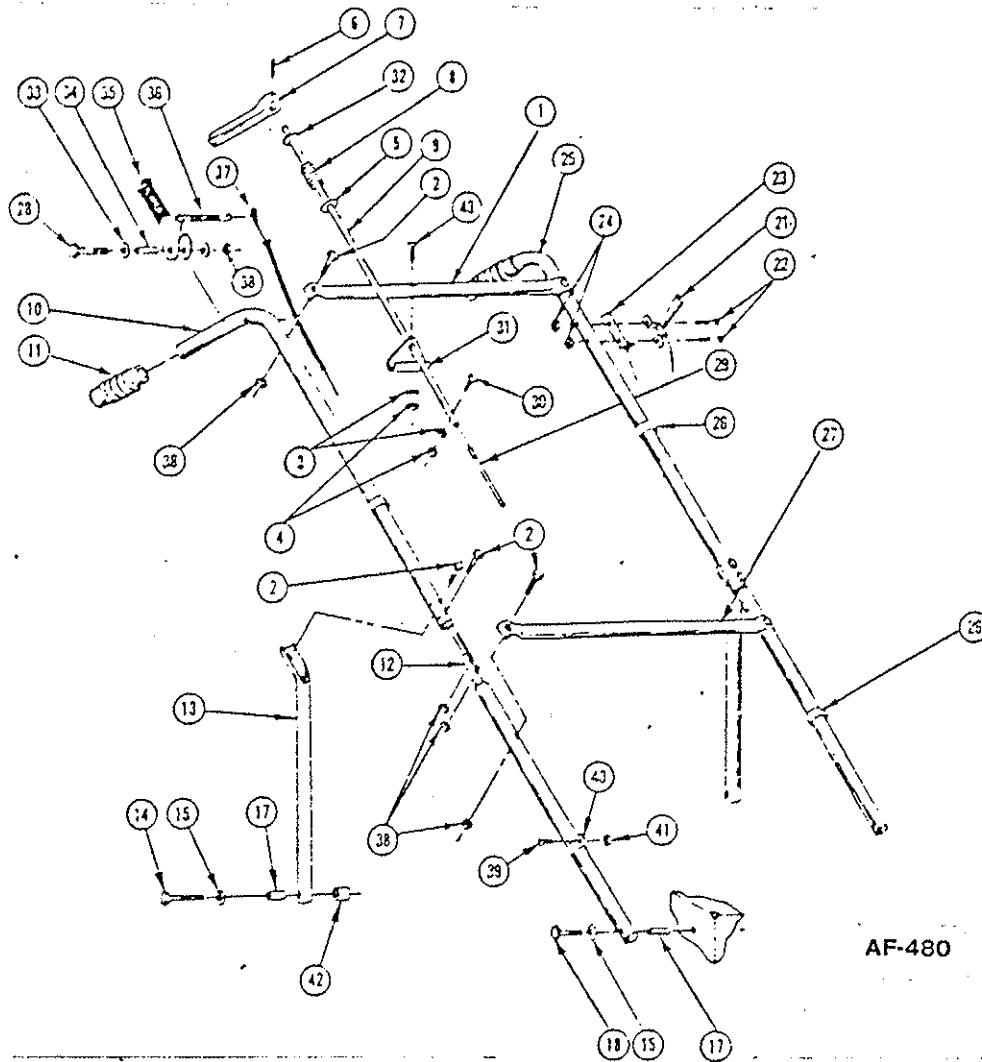
## CHASSIS &amp; DRIVE ASSEMBLY

## PARTS LIST

Ref. No.	Part No.	Qty. Per Unit	Description	Ref. No.	Part No.	Qty. Per Unit	Description
1	81-25-B	1	Jack Shaft Weldment	45	68-310-B	2	Wheel Assembly
2	84-41-B-32	1	Chain, Roller #41-32p		68-311-B	2	• Wheel
3	84-41-B-50	1	Chain, Roller #41-50p		68-312-A	2	• Tire 5.30/4.50x6
4	74-116-A	2	Bearing Assy. Side Flange	46	65-416-16	1	Bolt, Hex. Hd., 1/4-20x1
5	280-09	1	#9 Woodruff Key	47	935-416	2	Lockwasher, Spring, 1/4
6	72-516-12	4	Bolt 5/16-18x3/4 Self Tapping	49	82-159-B	1	Spring Support Bracket
7	81-10-A	1	Spacer	50	81-19-D	1	Chassis Weldment
8	72-516-16	1	Bolt, Self Tapping, 5/16-18x1	51	82-40-A	1	Drive Shaft
9	75-79-A	1	Shifter Knob	52	66-138-A	1	Seal Master Bearing
10	54-227-A	2	Spacer	53	81-43-A	1	Spring Bracket
11	68-28-A	1	Cupped Spring Washer	54	74-86-A	1	Sheave, Drive
12	82-137-A	1	Stop & Bracket Weldment	55	82-16-C	1	Clutch Bracket
13	70-67-B	1	Clutch Lever	57	335-616	2	Nut, Hex. Plain, 3/8-16
14	65-416-12	6	Bolt, Hex. Hd., 1/4-20x3/4	59	80-162-A	1	Shifter Spring
15	82-195-D	1	Chain Guard	61	515-516-12	1	Screw Rd. Hd. Mach. 5/16-18x3/4
16	74-167-A	1	Spring, Brake	62	65-416-8	5	Hex. Bolt 1/4-20x1/2
17	74-96-A	1	Brake Lever	64	364-616	1	Nut, Hex. Lock (Thin) 3/8-16
18	57-110-A	1	Cotter Pin	66	66-431-A	4	Washer
19	82-223-B	1	Shifter Rod	67	81-42-A	2	Spacer
20	83-29-A	1	Shifter Plate	69	65-516-10	4	Bolt, Hex. Hd., 5/16-18x5/8
21	365-416	6	Nut, Hex. Lock, 1/4-20	70	945-516	2	Flat Washer, Plain 5/16
22	945-416	7	Washer, Flat, 1/4	71	65-616-20	1	Bolt, Hex. Hd., 3/8-16x1 1/4
23	76-36-A	1	Special Washer	72	82-141-B	1	Adj. Plate Weldment
24	82-164-C	1	Brake Bracket	73	80-44-A	2	Clevis Pin
25	83-35-A	1	Spacer	74	380-332-8	2	Cotter Pin
26	60-416-10	1	Bolt, Hex. Hd., 1/4-28x5/8	75	80-32-A	1	Bracket & Nut Weldment
27	365-616	5	Nut, Hex. Lock, 3/8-16	76	65-616-16	6	Bolt, Hex. Hd., 3/8-16-1
28	335-516	1	Hex. Nut, Plain, 5/16-18	78	81-44-A	1	Nylon Pulley
29	82-134-B	1	Shift Rod Weldment	79	81-45-A	1	Spacer
30*	SA-857-A	1	Transmission	80	81-31-A	1	Spring
31	48-277-A	2	Key, 3/16 Square	82	935-616	2	Lockwasher, Spring, 3/8
32	65-516-12	12	Bolt, 5/16-18-3/4	83	364-416	4	Nut, Hex. Lock Thin, 1/4-20
33	82-20-C	1	Transmission Bracket Brace	84	66-139-A	2	Flange Bearing
34	365-516	13	Nut, Hex. Lock, 5/16-18	85	81-40-A	1	Bearing Spacer
35	82-15-D	1	Transmission Bracket	86	81-166-A	4	Special Washer
36	74-114-A	1	Flexible Coupling	87	65-516-24	2	Bolt Hex. Hd. 5/16-18x1 1/2
37	81-83-D	1	Shaft Guard	88	60-816-88	1	Bolt Hex. Hd. 1/2-20x1 1/2
38	935-516	4	Lockwasher, Spring, 5/16	90	66-436-A	1	Rubber Roller
39	65-516-16	2	Bolt, Hex. Hd., 5/16-18x1	91	84-259-A	1	Bushing
40	SA-817-B	2	Bearing Assy. Modification	92	363-816	1	Nut Hex. Lock 1/2-20
42	SA-1243-D	1	Differential Assembly	93	82-147-B	2	Roller Support
43	364-516	4	Nut, Hex. Lock Thin, 5/16-18	94	936-516	2	Lockwasher, Int. Tooth 5/16
44	74-168-A	2	Wheel Spacer	95	60-62-A	1	Roll Pin

\*Peerless No. (See Transmission Page)

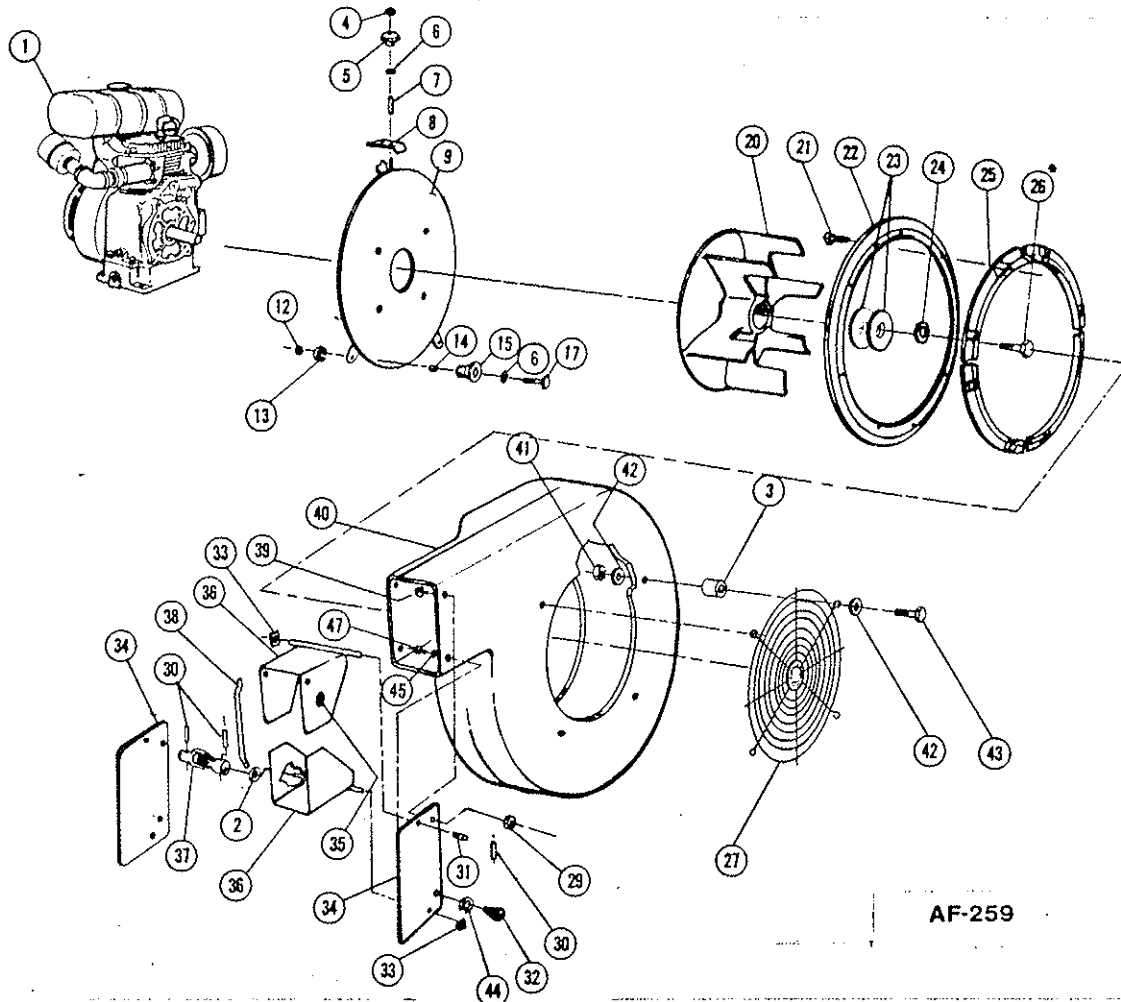
## HANDLE ASSEMBLY



## PARTS LIST

Ref. No.	Part No.	Qty. Per Unit	Description	Ref. No.	Part No.	Qty. Per Unit	Description
1	82-249-B	1	Upper Cross Bar	24	365-10	2	Nut, Hex. Lock, 10-24
2	65-416-24	8	Bolt, Hex. Hd., 1/4-20x1	25	83-18-C	1	Upper Handle
3	935-416	2	Lock Washer, Spring, 1/4-20	26	80-276-A	3	Clamp - Snap On
4	335-416	2	Nut, Hex. Plain, 1/4-20	27	81-58-B	1	Cross Bar Lower
5	81-164-A	1	Nylon Washer	28	65-416-28	1	Bolt, Hex. Hd., 1/4-20x1 3/4
6	67-521-A	1	Roll Pin 3/16x1	29	SA-1204-A	1	Control Rod Lower
7	76-34-A	1	Deflector Control Lever	30	69-416-16	1	Bolt, Contour Hd., 1/4-20x1
8	74-135-A	1	Spring	31	82-252-A	1	Bracket
9	76-32-A	1	Control Rod, Upper	32	55-161-A	1	Special Washer
10	81-23-C	1	Upper Handle	33	945-416	2	Flat Washer, Plain 1/4
11	80-232-A	2	Handle Grips	34	80-225-A	1	Spacer
12	82-167-B	2	Middle Handle	35	SA-1176-A	1	Clutch Grip Assy.
13	85-23-C	2	Handle Back Brace	36	74-176-A	1	Spring
14	65-516-40	2	Bolt, Hex. Hd. 5/16-18x2 1/2	37	82-165-A	1	Clutch Cable
15	935-516	4	Lock Washer, Spring, 5/16	38	365-416	9	Hex. Lock Nut 1/4-20
17	80-238-A	4	Insert	39	515-8-8	1	Screw, Rd. Hd. Mach. 8-32x1/2
18	65-516-28	2	Bolt, Hex. Hd., 5/16-18x1 3/4	40	81-88-A	1	Clamp
21	83-25-B-44	1	Throttle Control	41	365-8	1	Nut, Hex. Lock 8-32
22	515-10-24	2	Screw, Rd. Hd. 10-24x1 1/2	42	79-139-A	2	Spacer
23	SA-1175-B-41	1	Stop Switch Assembly	43	69-416-24	1	Bolt, Contour Hd. 1/4-20x1 1/2

BLOWER ASSEMBLY

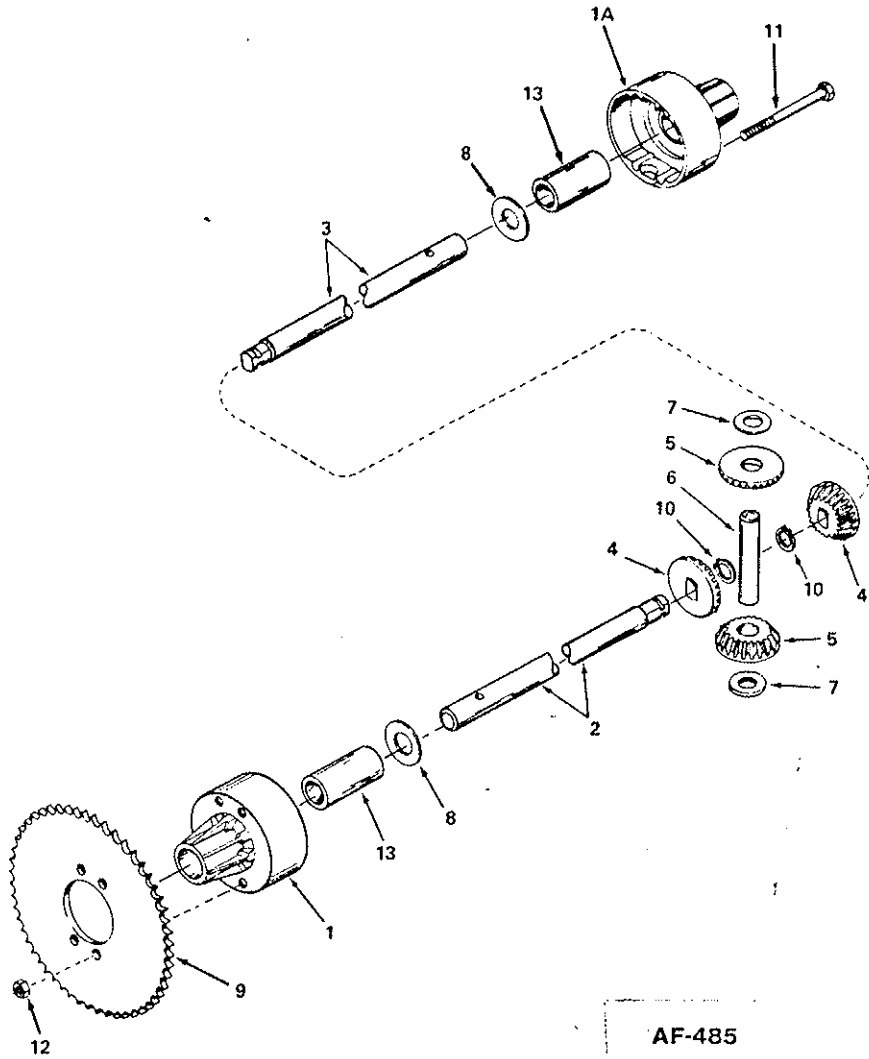


PARTS LIST

Ref. No.	Part No.	Qty. Per Unit	Description	Ref. No.	Part No.	Qty. Per Unit	Description
1		1	Engine (on engine assy. page)	25	73-123-C	4	Anti-Wrap
2	81-120-A	1	Spacer	26*	60-716-16	1	Bolt, Hex. Hd. 7/16-20x1
3	82-142-A	4	Spacer, Grille	27	82-121-C	1	Grill Assembly
4	365-516	1	Nut, Hex. Lock, 5/16-18	29	365-416	3	Nut, Hex. Lock, 1/4-20
5	79-94-A	1	Knob	30	60-62-A	3	Roll Pin, 1/8 Dia. x 3/4
6	945-516	3	Washer, 5/16	31	73-372-A	1	Spring
7	79-67-A	1	Spacer	32	75-79-A	1	Knob
8	79-51-A	1	Clamp	33	75-80-A	2	Shaft, Retainer
9	80-316-C	1	Back Plate Weldment	34	73-124-B	2	Exhaust, Side Plate
12	335-516	2	Nut, Hex., 5/16-18	35	73-406-A	1	Friction Disc
13	935-516	2	Washer, Lock, 5/16	36	73-125-B	2	Exhaust Deft. Weld.
14	80-101-A	2	Bushing	37	82-251-A	1	Universal Joint
15	80-144-A	2	Guide, Roller	38	73-126-A	1	Link, Exhaust Def.
17	65-516-20	2	Bolt, Hex. Hd., 5/16-18x1 1/4	39	65-416-12	3	Bolt, Hex. Hd., 1/4-20x3/4
20	73-118-D	1	Fan Wheel	40	82-118-D	1	Blower Housing
21	505-416-24	8	Screw, Flat Hd., 1/4-20x1 1/2	41	364-416	4	Nut, Hex. Lock (Thin) 1/4-20
22	79-129-C	1	Pivot Ring	42	945-416	8	Flatwasher, Plain 1/4
23	82-138-B3	2	Special Washer	43	65-416-24	4	Bolt, Hex. Hd., 1/4-20x1 1/2
24	935-716	1	Lockwasher, Spring, 7/16	44	935-416	1	Lockwasher, Spring, 1/4
				45	945-416	4	Washer, Plain, 1/4
				47	65-416-10	1	Bolt, Hex. Hd., 1/4-20x5/8

\*7/16 Bolt Torque to 55 to 59 ft. lbs.

PEERLESS DIFFERENTIAL  
MODEL 100-038



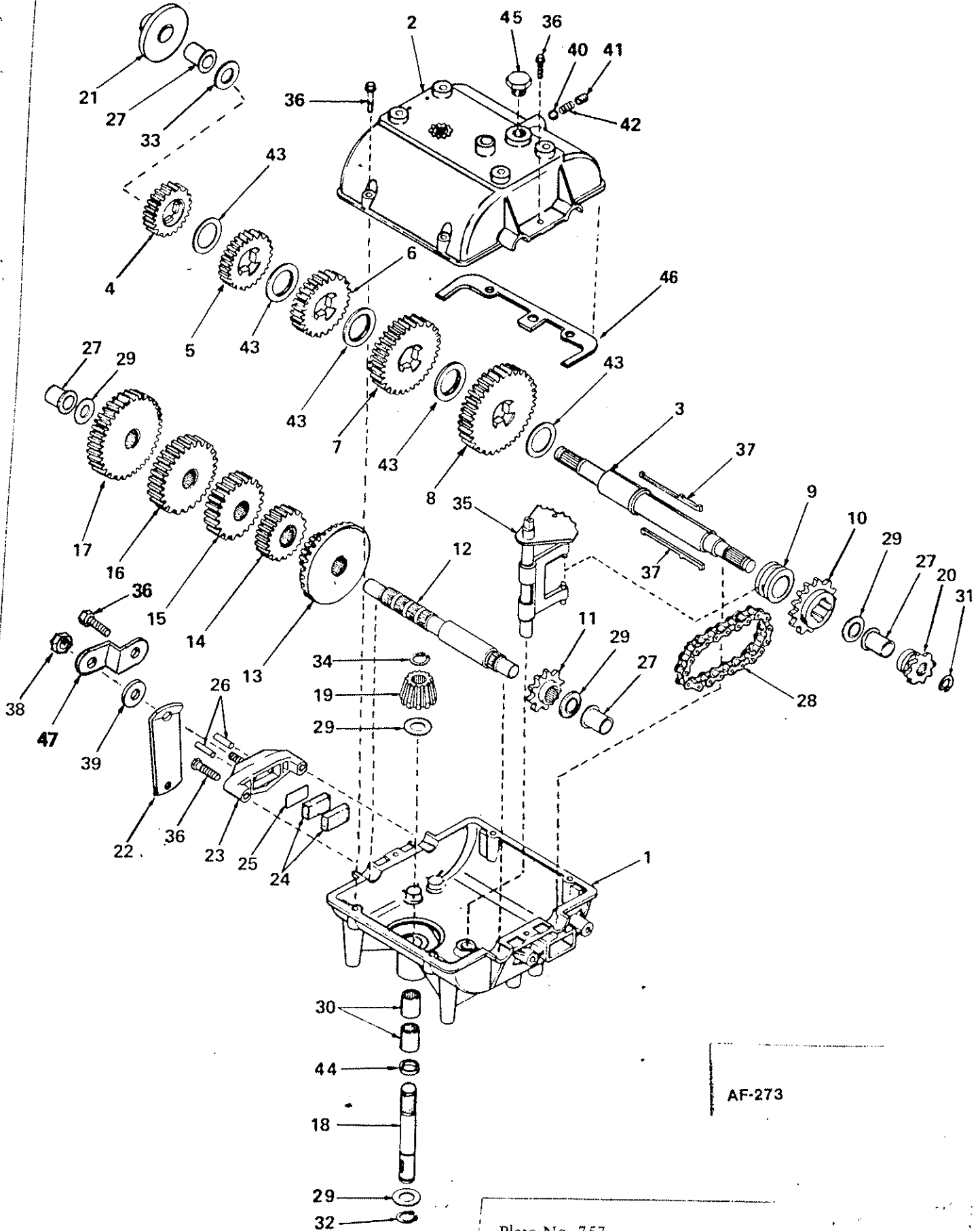
AF-485

Ref. No.	Part No.	Description
1	774484	Housing, Differential carrier (Incl. No. 13)
1A	774485	Housing, Differential carrier (Incl. No. 13)
2	774583	Axle (8-3/4" long)
3	774584	Axle (18-1/8" long)
4	778067	Gear, Bevel
5	778068	Gear, Pinion
6	786040	Pin, Drive
7	780096	Washer, Thrust
8	780001	Washer
9	1549-P1	Sprocket
10	792018	Ring, Snap
11	792041	Screw, Flanged Hex Hd., 5/16-18 x 3-3/4
12	792042	Nut, Lock, 5/16-18
13	780077	Bushing

# PEERLESS TRANSMISSION

## MODEL 750-A

Five Speed



AF-273

Plate No. 757

## PEERLESS "750"-A TRANSMISSION

## PARTS LIST

Ref. No.	Part No.	Description
1	770061	Case, Transmission
2	772083	Cover, Transmission
3	776161	Shaft, Output & Brake
4	778121A	Gear, Spur (20 teeth)
5	778122A	Gear, Spur (22 teeth)
6	778123A	Gear, Spur (25 teeth)
7	778124A	Gear, Spur (30 teeth)
8	778125	Gear, Spur (35 teeth)
9	784266	Collar, Shift
10	786060	Sprocket (14 teeth)
11	786061	Sprocket (10 teeth)
12	776134	Shaft, Counter
13	778109	Gear, Bevel (42 tooth & 15 tooth spur gear)
14	778126A	Gear, Spur (20 teeth)
15	778127A	Gear, Spur (25 teeth)
16	778128A	Gear, Spur (28 teeth)
17	778129A	Gear, Spur (30 teeth)
18	776135	Shaft, Input
19	778113A	Bevel Pinion, Input
20	786047	Sprocket (8 teeth)
21	790003	Disk, Brake
22	790013	Lever, Brake
23	790025	Holder, Brake pad
24	790006	Pad, Brake
25	790007	Plate, Brake pad
26	786026	Pin, Dowel
27	780105A	Bushing, Flanged
28	786062	Chain, Roller (No. 41 chain, 22 links)
29	780072	Washer, Thrust
30	780086	Bearing, Needle
31	792072	Ring, Retaining
32	792035	Ring, Retaining
33	780109	Washer
34	788040	Ring, Retaining
35	784267	Rod & Fork Assy., Shift
36	792073	Screw, Hex. Hd. Taptite, 1/4-20x2 1/4
37	792089A	Key
38	792075	Nut, Lock, 5/16-24
39	792076	Washer, Flat, 5/16
40	792077	Ball, Steel, 5/16"
41	792078	Screw, Set, 3/8-16x3/8
42	792079	Spring
43	780108	Washer, Thrust
44	792001	"O" Ring
45	792074	Plug
46	788054	Gasket
47	786046	Bracket