

# OWNER'S GUIDE



## **hurricane**<sup>®</sup> MODEL NO. HC-8800



AF-616

**READ THESE INSTRUCTIONS  
BEFORE SETTING UP AND OPERATING MACHINE**

**PARKER SWEEPER COMPANY**

**Box 1728**

**Springfield, Ohio 45501-1728**

**88-99-A**

Plate No. 1395

## TO THE OWNER

These instructions were written to assist you in the assembly and operation of your Hurricane. **READ THE INSTRUCTIONS** thoroughly **BEFORE** attempting to assemble and operate the machine so that you are familiar with the complete procedure and the safety precautions.

### RULES FOR SAFE OPERATION



The following safety precautions are suggested to prevent damage to the equipment or injury to the operator or nearby persons.

1. TO PREVENT ACCIDENTAL STARTING ALWAYS REMOVE THE SPARK PLUG before working on the engine or equipment driven by the engine.
2. DO NOT RUN THE ENGINE IN AN ENCLOSED AREA. Exhaust gases contain carbon monoxide which is an odorless and deadly poison.
3. DO NOT FILL GASOLINE TANK WHILE ENGINE IS HOT OR RUNNING. Spilling gasoline on a hot engine may cause a fire or explosion.
4. DO NOT leave machine unattended while running.
5. DO NOT ALLOW machine to blow in direction of people or objects that could be injured by blown materials.
6. AVOID operating machine in dangerous places where steep slopes or loose debris will endanger the safety of operator or other people.

### OPERATING INSTRUCTIONS

1. Before starting the engine, read the Operating and Maintenance instruction Manual. Add proper gasoline and oil to correct level.
2. Engine should be "broken in" by running at 1/2 throttle for 30 minutes and full throttle for an additional 30 minutes.
3. Machine will operate effectively by either pushing or pulling.
4. For moving heavy debris such as sticks, cleaning out flower beds, anything heavier than leaves, use the deflector in the down position.
5. For controlled blowing of leaves into windrows and stacking use the deflector in the up position.

### IMPORTANT

#### ALWAYS GIVE THE FOLLOWING INFORMATION WHEN ORDERING REPAIR PARTS:

- |                               |                           |
|-------------------------------|---------------------------|
| 1. Part Number (Not Ref. No.) | 3. Description of Part    |
| 2. Quantity Needed            | 4. Model No. of Hurricane |

If unable to obtain parts locally, write down above information and send to:  
**PARKER SWEEPER CO., BOX 1728, SPRINGFIELD, OHIO 45501**

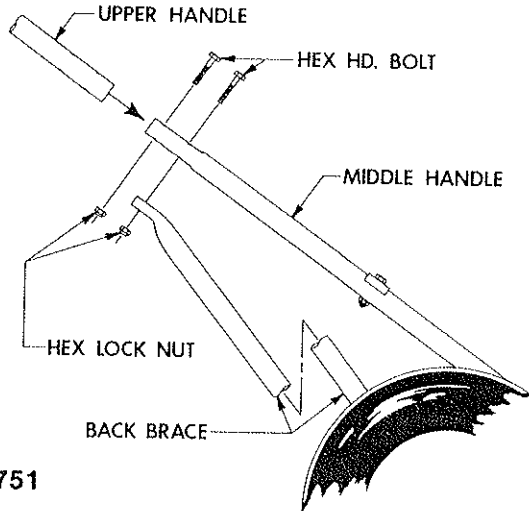
Your unit is right hand (R.H.) or left hand (L.H.) as you stand behind it.

# ASSEMBLY INSTRUCTIONS

OBSERVE SAFETY RULES AT ALL TIMES. DON'T TAKE CHANCES!

## UNPACKING

1. Remove all loose items from the carton.
2. Do not discard the carton or inserts until the unit is completely assembled.
3. Whenever the terms left or right hand, or "L" and "R", are used, it means from a position standing behind the unit facing forward. All hardware is on the unit in its proper location.



AF-751

## HANDLE ASSEMBLY

1. Remove Hex Hd. Bolts and Hex Lock Nuts from the bottoms of the Upper Handles.
2. Place Upper Handles over the ends of the Middle Handles.
3. Align the lower holes in both Upper and Middle Handles. Replace Hex Hd. Bolts, removed in step 1, to each of the lower holes.
4. Lift Handles until the Back Braces can be assembled to Bolts assembled in step 3. Assemble Hex Lock Nuts. **DO NOT TIGHTEN.**
6. Remove Hex Hd. Bolts and Hex Lock Nuts from middle holes in Upper Handles.
7. Align holes in Upper Handles and Upper Cross Bar. Replace Hex Hd. Bolts and Lock Nuts, removed in step 6. **DO NOT TIGHTEN.**

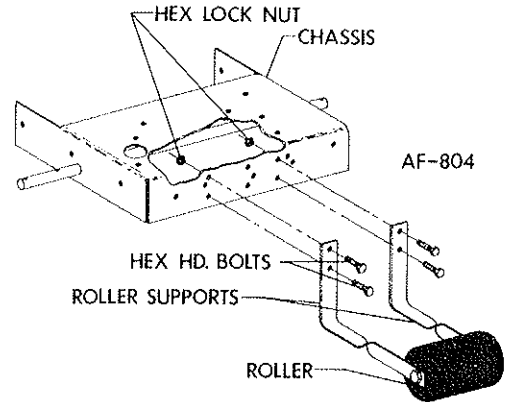
NOTE: Check Alignment of Handles. The Hex Lock Nuts have been left loose to allow movement between the holes and the Bolts. Do not bend tubing to accomplish proper alignment.

8. Once Handles are aligned tighten all Hex Lock Nuts.

NOTE: Nuts should be tightened enough that at least two of the Bolt threads extend through the Nut. It may be necessary to collapse the tubing SLIGHTLY to accomplish this.

## ROLLER ASSEMBLY

1. Remove Hex Hd. Bolts and Hex Lock Nuts from the ends of Roller Supports.
2. Align holes in Roller Supports with holes in Chassis and secure with hardware removed in step 1. (See illustration.)



## To Attach An Engine To The Chassis

1. Place the Engine on the Chassis with the shaft extending forward away from the Handles.
2. The Engine should be centered between the Handles with the front face of the Engine (Back Plate mounting surface) even with the front of the Chassis.
3. Secure the Engine to the Chassis with bolts through holes provided. Some Engines may require drilling additional holes to retain the correct Engine position.

## To Attach The Back Plate To An Engine

1. Remove the Back Plate by first unscrewing the knob, at the top of the Blower Housing until it stops against the Lock Nut at the top end of the threads.
2. Lift the Clamp and rotate it 90° either direction.
3. Push the Back Plate sideways to disengage the two Rollers.
4. Remove the Back Plate assembly by lifting it upward off the Blower Housing.
5. Attach the Back Plate to the Engine mount using four Spacers provided, with Bolts thru the Back Plate mounting holes. The Rollers on the Back Plate must be outward away from the Engine. NOTE: The Back Plate MUST be centered around the Engine shaft, with the Rollers parallel to the bottom of the Chassis.

## To Attach The Fan To The Engine

1. The Fan must be spaced out from the Back Plate. A Spacer has been provided. It will satisfy most Engine applications.
2. The Spacer must stop against a shoulder on the Engine shaft, not against a bearing, housing or seal.
3. The Fan must be held secure from rotation on the Engine shaft by a close fitting Key. A keyway is provided in the Fan.
4. Two heavy special Washers are provided. Both Washers and a Lockwasher must be used between the bolt head and the Fan to prevent concaving and loosening of the Bolt that secures the Fan.
5. The Fan Bolt must have a minimum of 1 and 1 half times the Bolt diameter of engagement into the Engine shaft.
6. Only a grade 5 or grade 8 bolt should be used to secure the Fan, with a Lockwasher under the Bolt head.
7. The Fan Bolts should be torqued to the applicable specification for the bolt used.

### To Install The Blower Housing

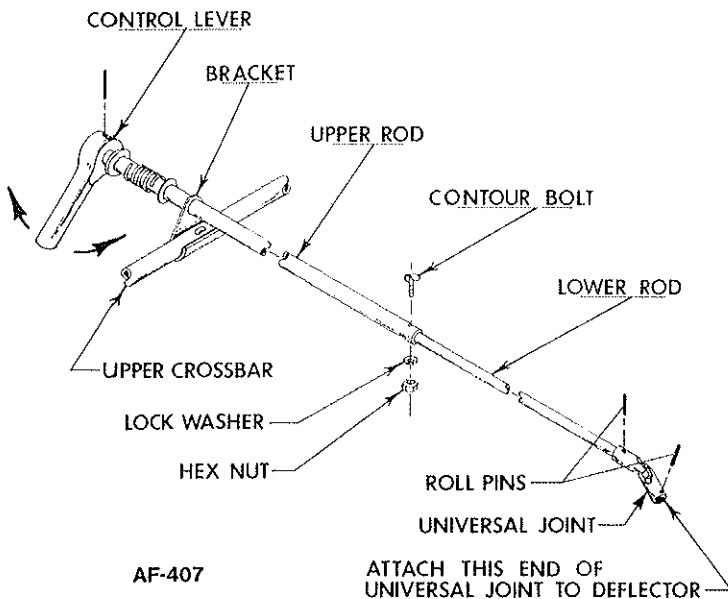
1. Place the blower housing over the fan and position the pivot ring against the back plate.
2. Push the back plate upward until the rollers on the bottom firmly engage the pivot ring.
3. Rotate the clamp to engage the pin on the top of the back plate thru the hole in the clamp. **NOTE:** The toe of the clamp must engage over the top of the pivot ring.
4. Tighten the knob at the top of the back plate, to lock the pivot ring in place.

**CAUTION:** Before attaching the ignition wire to the spark plug, pull the recoil starter cord to rotate the fan, to make sure the fan can rotate freely.

Attach the ignition wire to the spark plug.

### Control Rod Connection

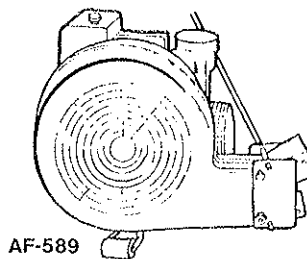
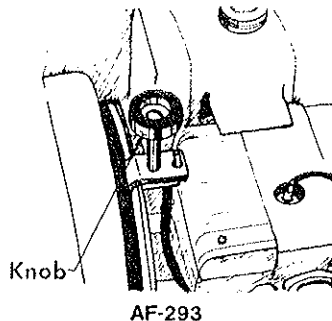
1. Remove the contour hd. bolt, lockwasher and hex. nut from the upper control rod.
2. Telescope the lower and upper control rods together.
3. Replace the contour hd. bolt, lock washer and hex nut thru the control rods.



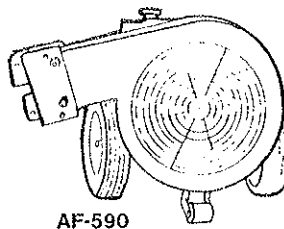
### Blower Adjustment "Hi or Low"

**When adjusting the blower housing to HI or LOW BLOW, engine must be stopped.**

1. To adjust the blower housing to a desired position, turn the knob counter-clockwise to loosen.
2. Pivot the exhaust deflector to the desired position and tighten the knob.
3. The exhaust deflector control rod assembly will pivot with the blower housing to any position.



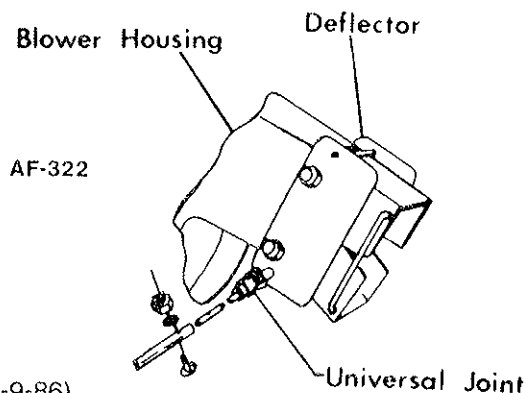
Blower housing in the Low Blow Position.



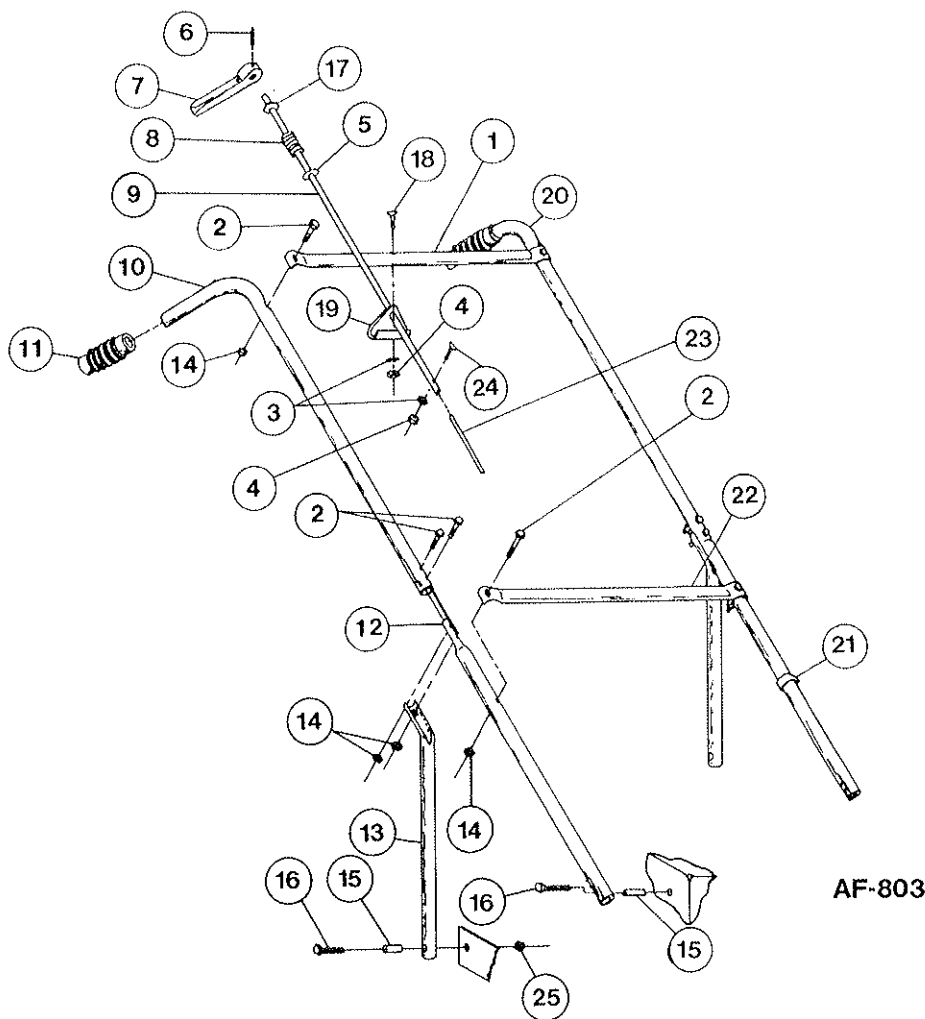
Blower housing in the Hi Blow position.

### To Control Deflection Angle

By turning the lever on the control rod assembly, the deflection angle can be changed to control the air flow from the exhaust deflector.



# HANDLE ASSEMBLY

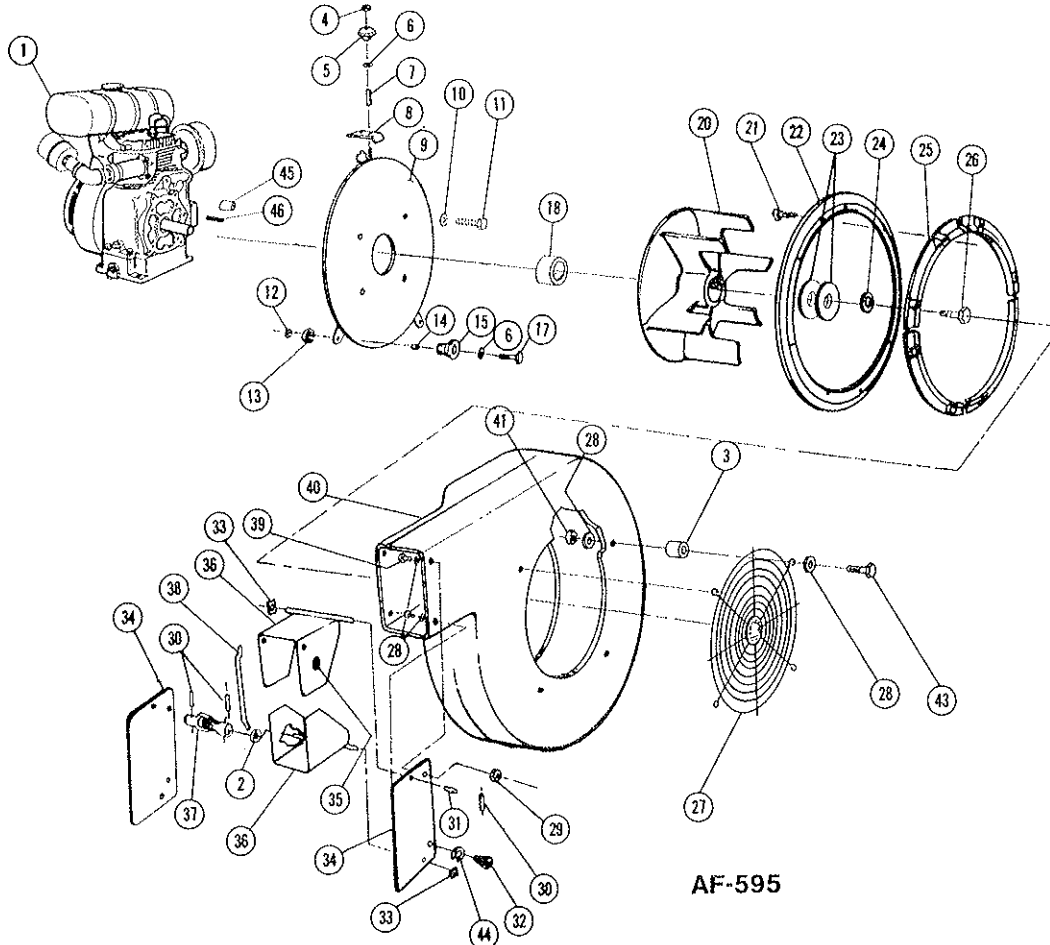


## PARTS LIST

Ref. Part No.	Part No.	Qty. Per Unit	Description	Ref. Part No.	Part No.	Qty. Per Unit	Description
1	82-2499-B	1	Upper Cross Bar	*14	365-416	8	Nut, Hex Lock 1/4-20
*2	65-416-24	8	Bolt, Hex Hd. 1/4-20 x 1 1/2	15	80-238-A	4	Insert
*3	935-416	2	Lockwasher, Spring 1/4-20	*16	65-516-24	4	Bolt, Hex Hd., 5/16-18 x 1 1/2
4	335-416	2	Nut, Plain Hex 1/4-20	17	55-161-A	1	Special Washer
5	81-164-A	1	Nylon Washer	*18	69-416-24	1	Bolt, Contour Hd., 1/4-20 x 1 1/2
6	67-521-A	1	Roll Pin 3/16 x 1	19	82-252-A	1	Bracket
7	76-34-A	1	Deflector Control Lever	20	83-18-C	1	Upper Handle
8	74-135-A	1	Spring	21	80-276-A	1	Clamp-Snap On
9	76-235-A	1	Control Rod, Upper	22	81-47-B	1	Cross Bar Lower
10	80-321-C	1	Upper Handle	23	SA-1146-A	1	Lower Control Rod Assembly
11	80-232-A	2	Handle Grips	*24	69-416-16	1	Bolt, Contour Hd. 1/4-20 x 1
12	82-149-B	2	Middle Handle	*25	364-516	2	Nut, Hex Lock (Thin) 5/16-18
13	88-94-C	2	Handle Back Brace				

\*Items should be purchased through a local hardware store.

# BLOWER ASSEMBLY



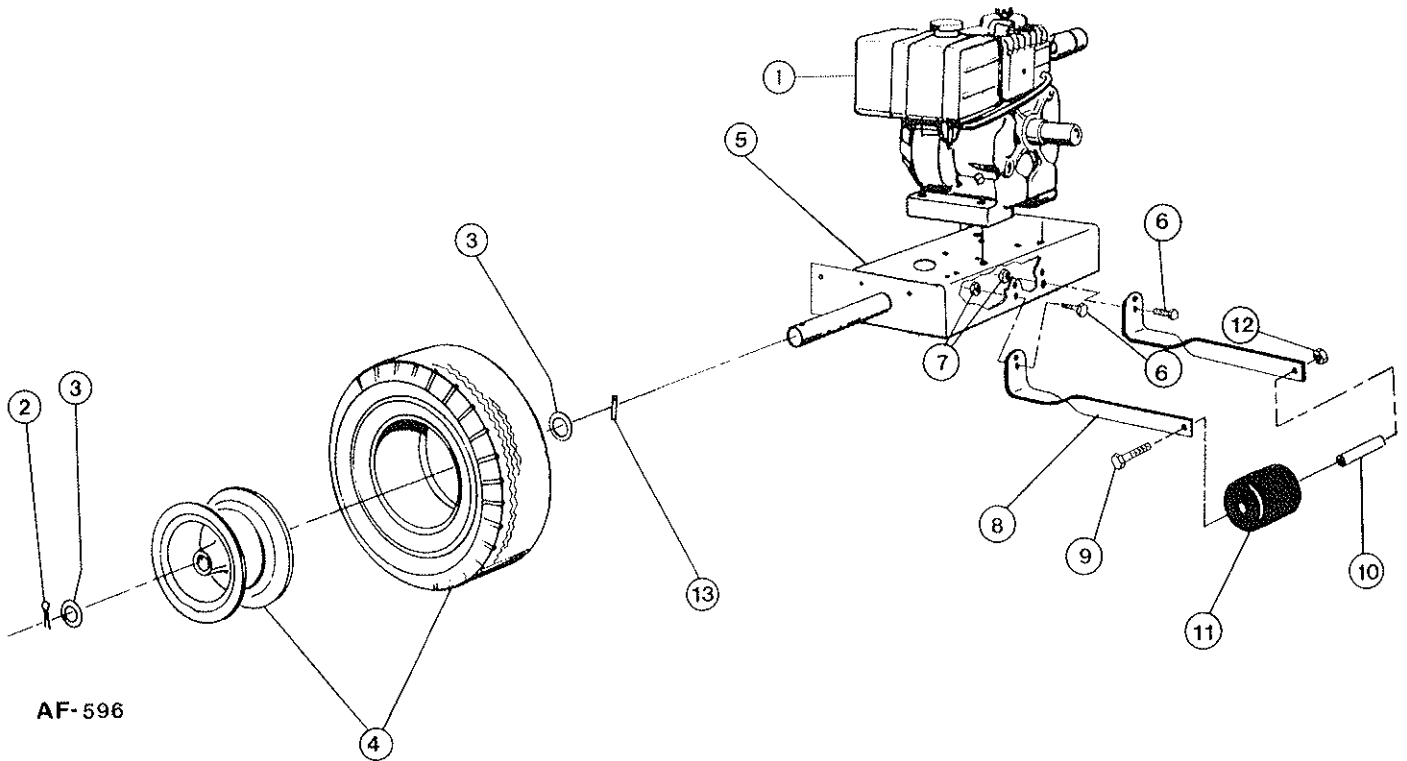
AF-595

## PARTS LIST

Ref. No.	Part No.	Qty. Per Unit	Description	Ref. No.	Part No.	Qty. Per Unit	Description
1	Reference	1	Engine	*24	935-716	1	Lockwasher, Spring, 7/16
2	81-120-A	1	Spacer	25	73-123-C	4	Anti-Wrap
3	82-142-A	4	Spacer Grille	26		1	Bolt, Fan
*4	365-516	1	Nut, Hex Lock, 5/16-18	27	82-121-C	1	Grill
5	79-94-A	1	Knob	*28	945-416	12	Flatwasher, Plain, 1/4
*6	945-516	3	Flatwasher, Plain 5/16	*29	365-416	3	Nut, Hex Lock, 1/4-20
7	79-67-A	1	Spacer	30	60-62-A	3	Roll Pin, 1/8 Dia. x 3/4
8	79-51-A	1	Clamp	31	73-372-A	1	Spring
9	80-316-C	1	Back Plate Weldment	32	75-79-A	1	Knob
*10		4	Lockwasher, Spring	33	75-80-A	2	Shaft, Retainer
*11		4	Bolt, Hex Hd.	34	73-124-B	2	Exhaust, Side Plate
*12	335-516	2	Nut, Plain Hex 5/16-18	35	73-406-A	1	Friction Disc
*13	935-516	2	Lockwasher, Spring 5/16	36	73-125-B	2	Exhaust Deft. Weld
14	80-101-A	2	Bushing	37	82-251-A	1	Universal Joint
15	80-144-A	2	Guide, Roller	38	73-126-A	1	Link, Exhaust Def.
*17	65-516-20	2	Bolt, Hex Hd., 5/16-18 x 1 1/4	*39	65-416-12	4	Bolt, Hex Hd. 1/4-20 x 3/4
18	73-415-A	1	Spacer, Fan	40	82-118-D	1	Blower Housing
20	73-118-D	1	Fan Wheel	*41	364-416	4	Nut Hex Lock (Thin) 1/4-20
*21	505-416-24	8	Screw, Flat Hd. Mach. 1/4-20 x 1 1/4	*43	65-416-24	4	Bolt, Hex Hd., 1/4-20 x 1 1/2
22	79-129-C	1	Pivot Ring	*44	935-416	1	Lockwasher, Spring, 1/4
23	82-138-B3	2	Special Washer	45	79-139-A	4	Spacer-Back Plate
				46	63-130-A	1	Fan Key 1/4 x 1 3/4

\*These items should be purchased through a local hardware store.

# CHASSIS ASSEMBLY



## PARTS LIST

Ref. No.	Part No.	Qty. Per Unit	Description
1	Reference	1	Engine
2	380-432-20	2	Cotter Pin 1/8 x 1 1/4
*3	945-1216	4	Flatwasher, Plain 3/4
4	SA-231-B	2	Wheel Assembly
	68-447-B	2	• Wheel Hub
	68-312-A	2	• Tire
5	88-91-C	1	Chassis Weldment
*6	65-416-12	4	Bolt, Hex Hd. 1/4-20 x 3/4
*7	365-416	4	Nut, Hex Lock 1/4-20
8	82-147-B	2	Roller Support
*9	60-816-88	1	Bolt, Hex Hd. 1/2-20 x 5 1/2
10	84-259-A	1	Bushing
11	66-436-A	1	Rubber Roller
*12	363-816	1	Nut, Hex Lock 1/2-20
13	67-521-A	2	Roll Pin 3/16 x 1

\*Items should be purchased through a local hardware store.

