

**PARTS LIST**

**FOR**

**PARKER**

**FAIRWAY SWEEPER**

**MODEL**  
**FW 5448**

**PARKER**  
**SWEEPER** *Company*

**SPRINGFIELD 99, OHIO**



**MANUFACTURERS OF INDUSTRIAL FLOOR SWEEPERS  
AND PARKER LAWN SWEEPERS**

# ASSEMBLY AND OPERATING INSTRUCTIONS

## FOR

### MODEL FW-5448

# THE FAIRWAY TRAILER SWEEPER

## ASSEMBLY INSTRUCTIONS

**Read the following through before assembling or operating this machine. See Packing List Below.**

The new Parker Fairway comes to you in one crate, ready to operate except for assembling the canopy and attaching the tongue. After removing the machine from the crate proceed to assemble the canopy as follows:

1. Remove all of the canopy parts and tongue from the main frame, down to the slats.
2. Assemble the Side Panels (Ref. No. 2 of Figure 2) as follows. Remove the two Hex Head Bolts which are located at the lower front end of panels as shown in View "D" of Figure 2, Ref. No. 12, 13 and 14. Next remove the one  $\frac{3}{8}$ -inch Hex Nut from the Bolt which is located at the rear of the Panels as shown in View "C" of Figure 2, Ref. Nos. 9, 10 and 11.
 

Do not remove or loosen the  $\frac{1}{4}$ -inch Bolt that holds the rubber strips in place.

Place the Panels in place and fasten to the Main Frame as shown in Views "C" and "D," Fig. 2. Tighten these bolts securely at this time.
3. Packing List
  1. Tongue Hitch Assembly (Ref. No. 12, Fig. 1).  
Axle Pin Hitch (Ref. No. 19, Fig. 1).  
Two Cotter Pins (Ref. No. 20, Fig. 1).
  2. Right Side Panel (Ref. No. 2, Fig. 2).  
Left Side Panel (Ref. No. 3, Fig. 2).
  3. Panel Lower Front (Ref. No. 15, Fig. 2).
  4. Panel Upper Front (Ref. No. 18, Fig. 2).
  5. Panel Rear Screen Support Assy. (Ref. No. 20, Fig. 2).  
Cloth Bag with 34 Bolts, Nuts, Lockwashers, and Allen Wrench.
  6. Six Baling Canvas Assemblies (Ref. No. 11, Fig. 1).
  7. Front Canvas Rack (Ref. No. 17, Fig. 2).
4. Assemble the Lower Front Panel (Ref. No. 15, Fig. 2) as follows. Remove the  $\frac{1}{4} \times \frac{1}{2}$  bolts from the bag. Place Front Panel in place and insert a  $\frac{1}{4}$ -inch bolt at each end of the Angle Support (Ref. No. 16, Fig. 2) and fasten to the Side Panels with lockwashers and nuts provided in bag. Do not tighten these bolts at this time.
5. Place the Front Canvas Rack (Ref. No. 17, Fig. 2) over the holes provided in the Lower Front Canopy and fasten as shown in detail E-E, Fig. 2. Do not tighten bolts at this time.
6. Place the Upper Front Assembly (Ref. No. 18, Fig. 2) into position as shown and fasten the Lower Front Panel as shown in detail F-F, Fig. 2.
7. Assemble the Rear Support Assembly (Ref. No. 20, Fig. 2) to the Upper Front Assembly (Ref. No. 18, Fig. 2) as shown in detail A-A, Fig. 2. Fasten the Rear Support Assembly to the Side Panels (Ref. No. 2, Fig. 2) as shown in View B, Fig. 2. Use the bolts, washers and nuts provided at each end of the Rear Support Assembly.
8. Fasten the Sweeper Brush Hood (Ref. No. 2, Fig. 1) to the Lower Front Panel Angle Support (Ref. No. 16, Fig. 2) with  $\frac{1}{4} \times \frac{1}{2}$  bolts at four places as shown (double circled Ref. No. 1, Fig. 2).
9. Unroll the rubber fender shields and assemble to Angle Support (Ref. No. 16, Fig. 2) use hardware provided at end of shield and fasten at two places as shown (double circled Ref. No. 2, Fig. 2). Do this on both sides of the machine.
10. This assembly requires 33  $\frac{1}{4} \times \frac{1}{2}$  bolts, washers and nuts, 34 are provided. The one is extra. Tighten all of the bolts and nuts at this time. The canopy assembly is now complete.
11. Attach the Tongue Hitch to the unit as follows. Remove the  $\frac{1}{2}$ -inch diameter rod (Ref. No. 19, Fig. 1). Place the Tongue (Ref. No. 12, Fig. 1) into position as shown in Fig. 1. Replace rod and insert cotter pin and spread.

## OPERATING INSTRUCTIONS

### 1. CLUTCH FOR BRUSH REEL ENGAGEMENT

To engage the Clutch (Ref. No. 22, Fig. 8) rotate the Brush Reel by hand while pushing the Clutch Lever towards the center of the machine until it clicks into position. Make sure that the Lock Catch (Ref. No. 15, Fig. 8) then holds the Clutch Lever from backing off.

### 2. CLUTCH ADJUSTMENT

When the Clutch does not hold correctly, adjust the Turnbuckle (Ref. No. 23, Fig. 8) until it does.

### 3. BRUSH HEIGHT ADJUSTMENT

A. Before operating your new Fairway Sweeper, torque the Hex Head Bolts (Ref. No. 17, Fig. 4) to 20 ft. pounds. This operation is necessary because the Brush Strips have taken a set under pressure of the Brush Brackets causing the Brush Strips to become loose and may cause serious damage to your sweeper by the strips slipping out of the brackets if the bolts are not retightened as stated.

B. Remove the Cotter Pin (Ref. No. 19, Fig. 5) which is attached to Chain and Turn Knob (Ref. No. 16, Fig. 5) until the brushes contact the grass or surface to be swept. The brushes should not be any lower than good sweeping results demand. Keep in mind that the lighter the brushes contact the surface to be swept, the longer they will last. If the brushes lay over and become bent from constant use, remove them and turn them around so that they will wear in the opposite direction, and retorquer.

### 4. BALING CANVAS ASSEMBLY

To install the Baling Canvas (Ref. No. 11, Fig. 1) pull the Baling Handle (Ref. No. 20, Fig. 5) up and back until it slides into the rear catch (Ref. No. 23, Fig. 2, View G-G). This raises the Baling Canvas Carrier into position to receive the front rod of the Baling Canvas. Notice that the front rod has two holes 40 inches apart which allows the rod to fit onto the projecting pins of the carrier. After the Baling Canvas rod is secured by the two pins, release the Handle and return it to the forward position. This takes the forward end of the Baling Canvas forward and down to the floor of the machine. The remaining

rod of the Baling Canvas is rested at each end onto the Side Panels and is held in position by the locking type Bracket (Ref. No. 21, Fig. 2, View G-G).

### 1. LUBRICATION

The machine comes to you completely lubricated, however, we suggest you re-lubricate after every 8 hours of service. There are 16 alemite fittings located as follows:

Ref. No. 30, Fig. 8 — 4 fittings.

Ref. No. 13, Fig. 5 — 4 fittings.

Ref. No. 11, Fig. 4 — 2 fittings.

Ref. No. 4, Fig. 10 — 2 fittings.

Ref. Nos. 4 and 27, Fig. 11 — 4 fittings.

which requires two or three pumps of grease. There is also one oiler (Ref. No. 31, Fig. 8) which requires 20 drops of #30 SAE oil.

The worm adjusting screw (Ref. No. 14, Fig. 5) and all moving parts on the Clutch Link Assembly (Ref. No. 23, Fig. 8) should be oiled for smooth operation.

### 2. REPAIR AND ORDERING PARTS

General sweeper repairs can be made by most maintenance crews.

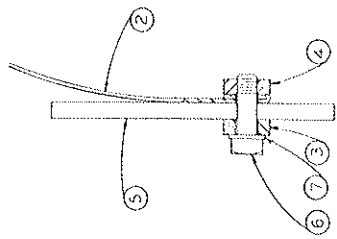
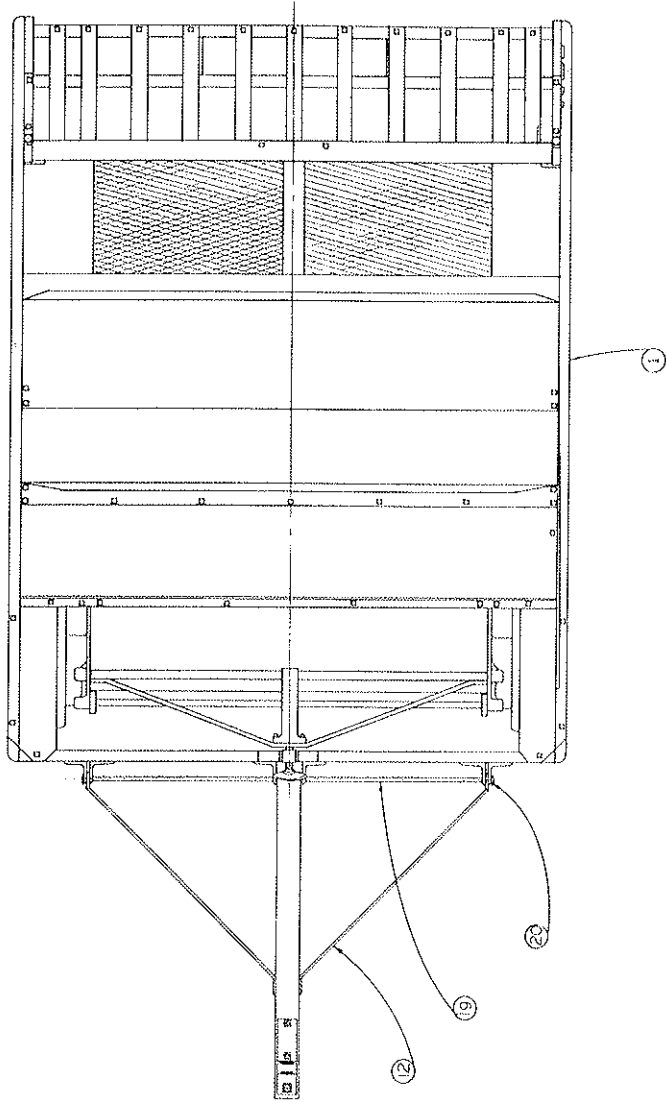
Refer to the exploded views, Figs. 1 through 11. Find parts to be ordered by their reference number, then refer to the parts number. When ordering new parts, always give the serial number which is located on the right hand side plate and model number of the sweeper as well as the part number and quantity required for replacement.

If any additional information is required, contact your nearest dealer or write to the factory.

Any parts that fail within the warranty period must be returned to the factory for inspection and if our inspection indicates to our satisfaction that the part was defective in manufacture or the failure resulted from improper assembly at the factory, it will be replaced with a new part without charge.

### 3. PARTS MARKED LEFT OR RIGHT HAND

When standing at the rear looking forward over the sweeper, the side to your right is the right side of the sweeper.



SECTION A-A

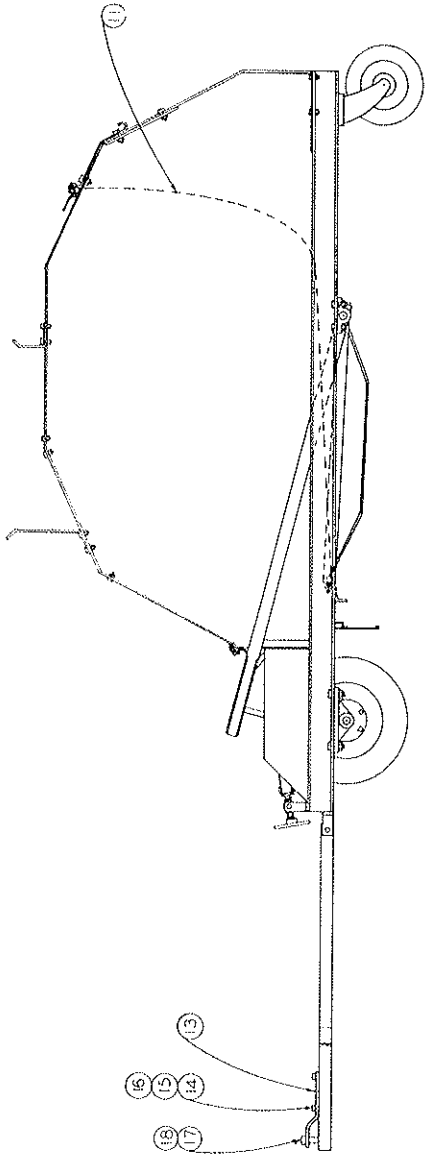
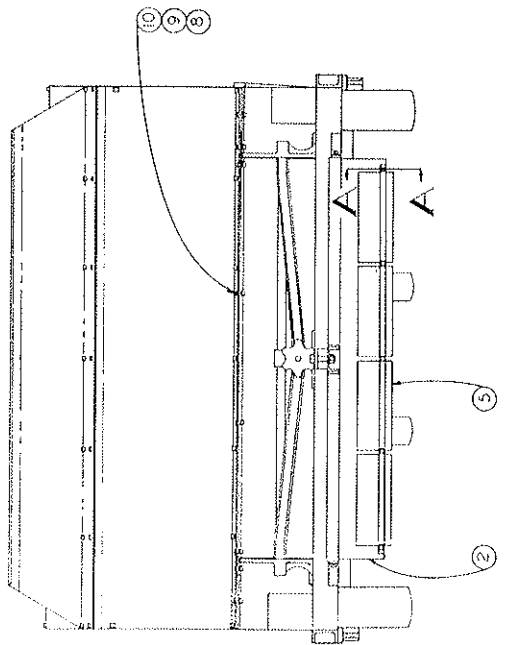


Fig. 1

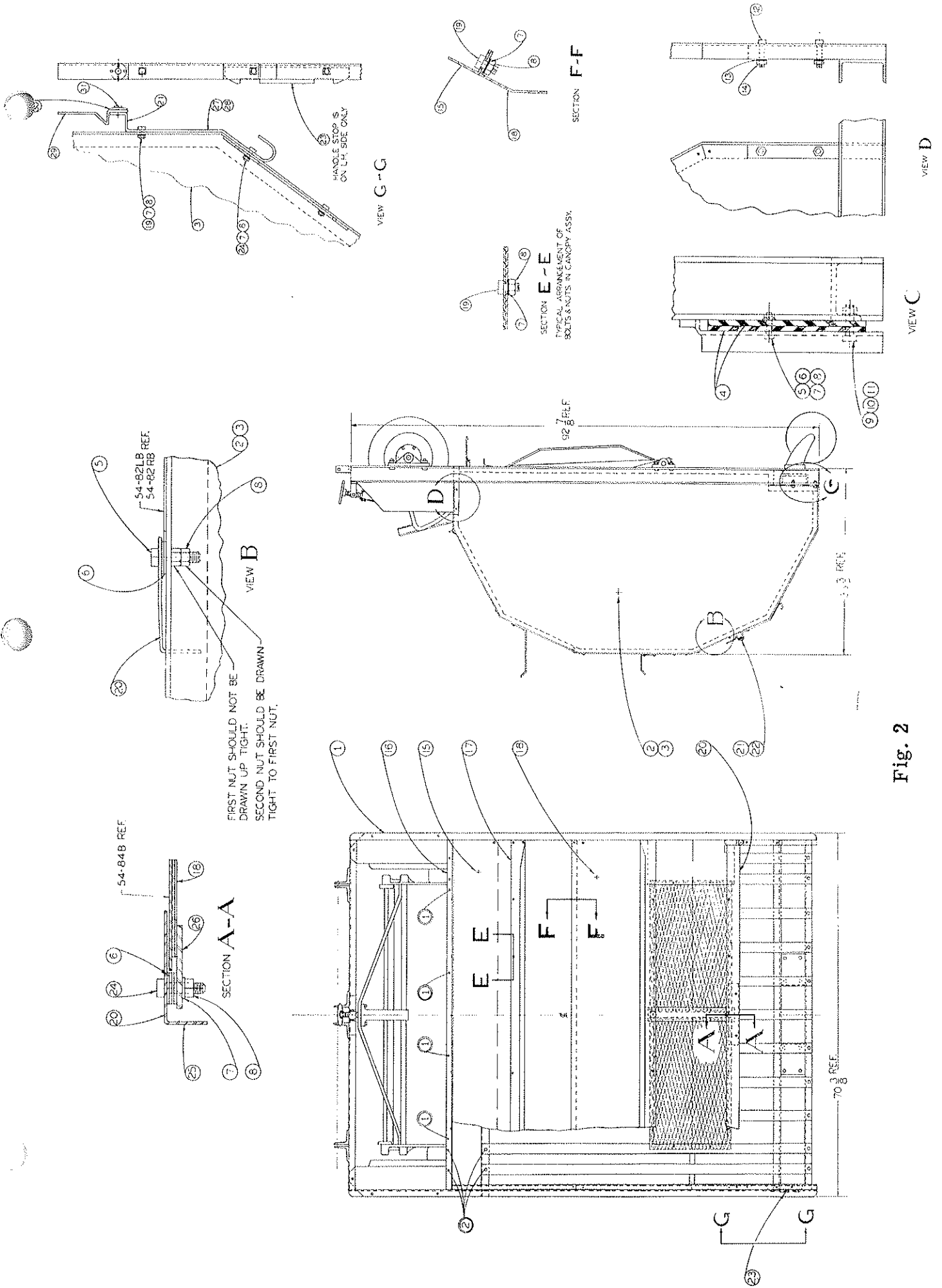


Fig. 2

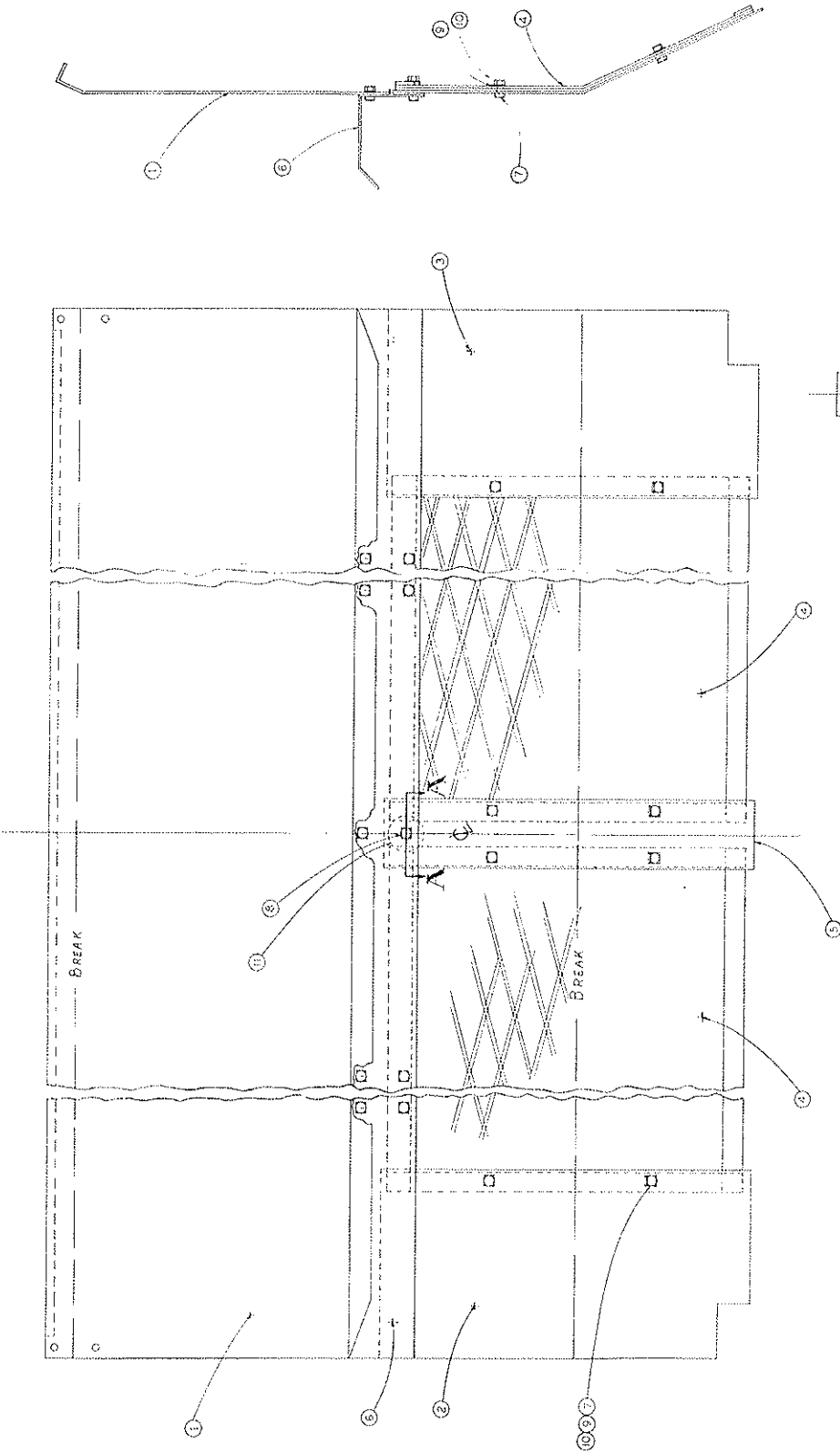


Fig. 3

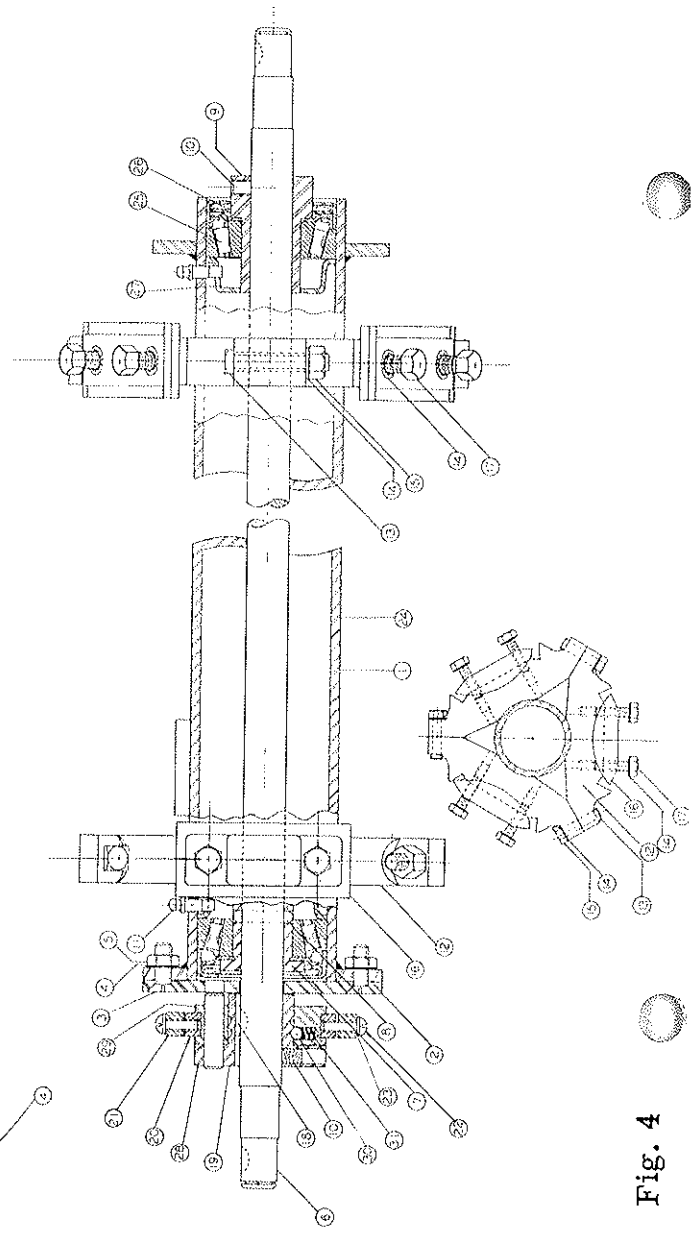
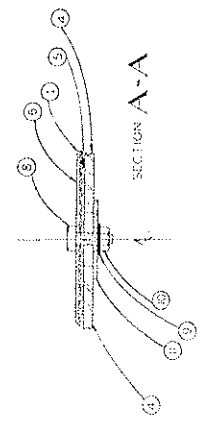


Fig. 4

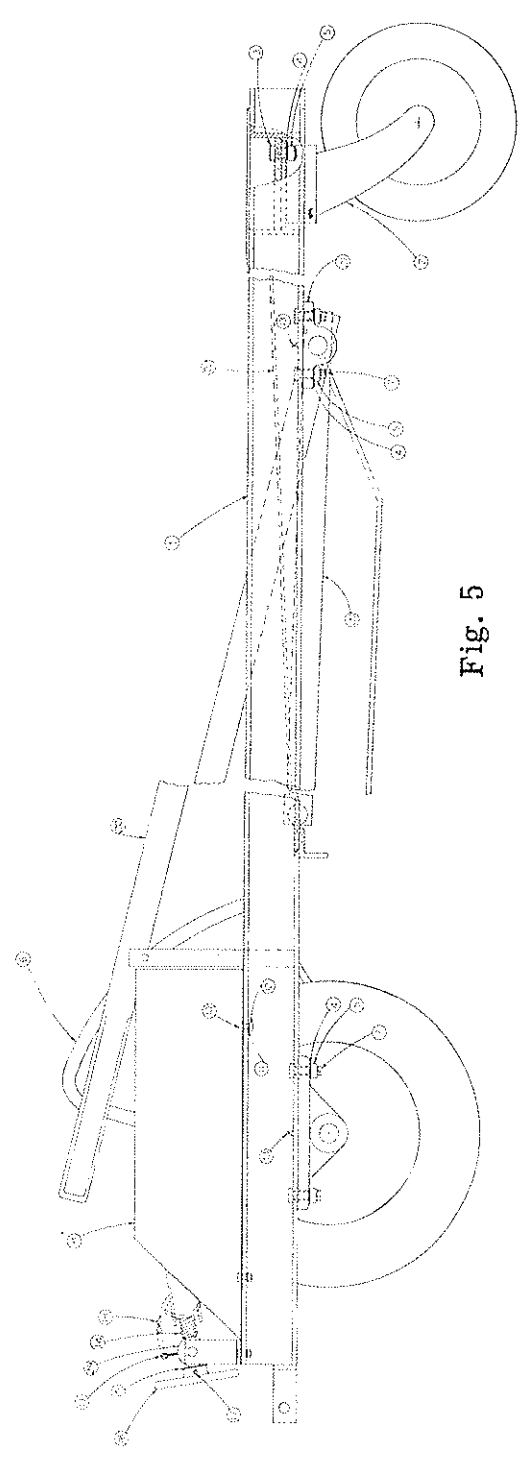
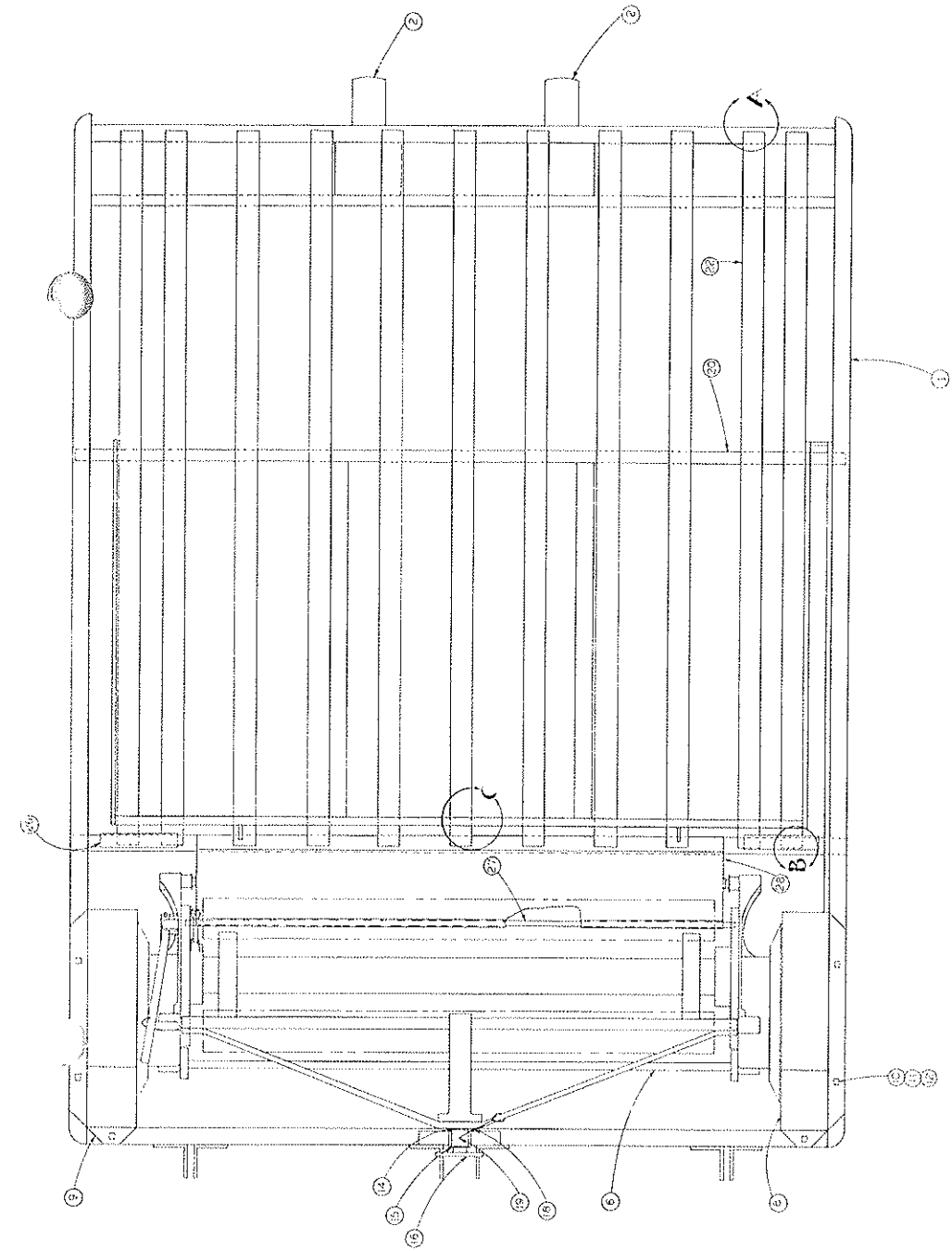
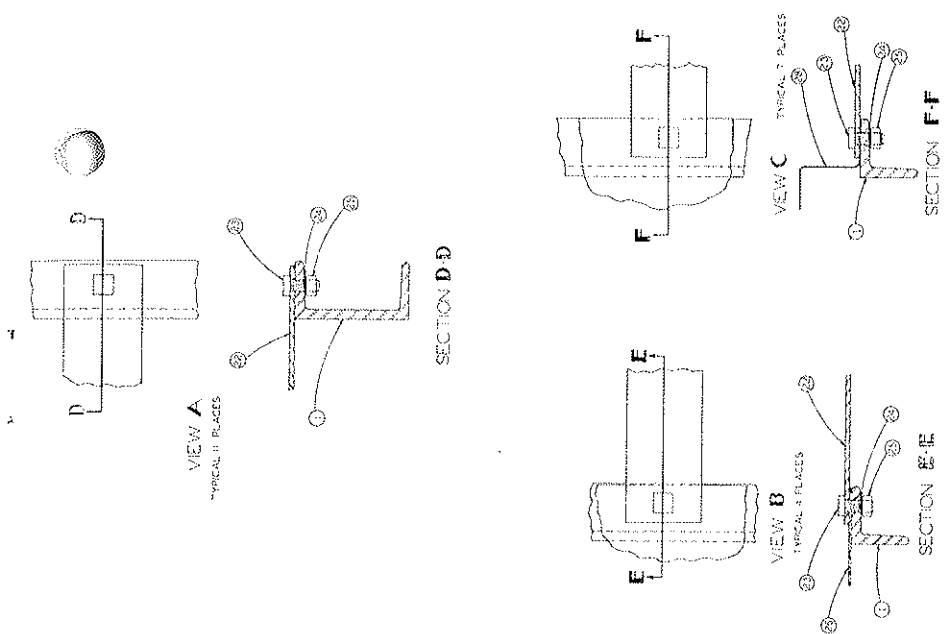
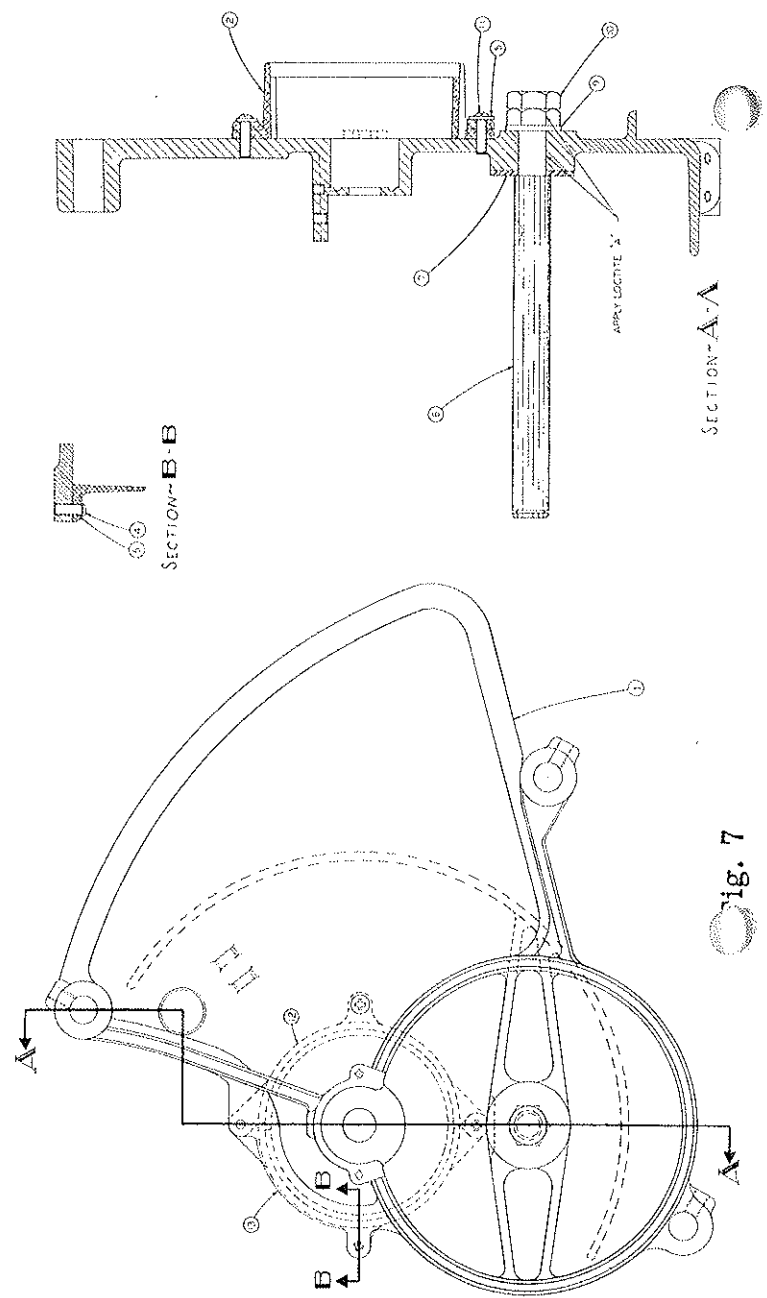
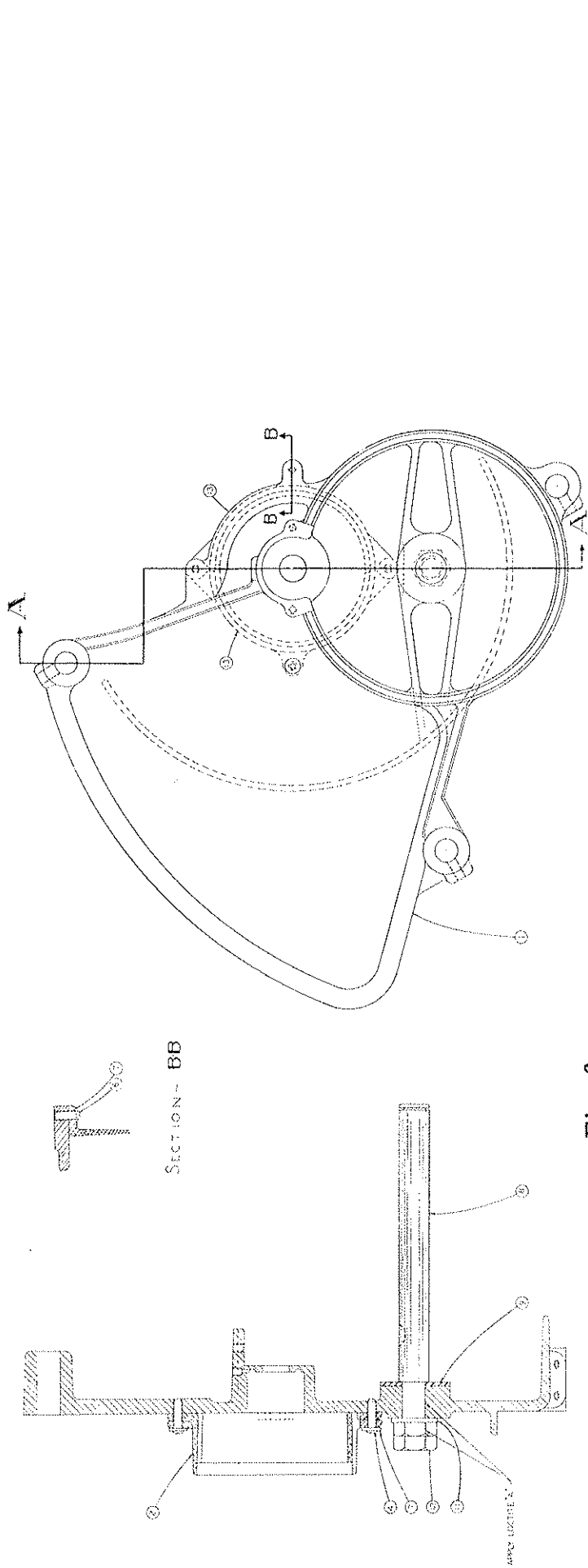


Fig. 5







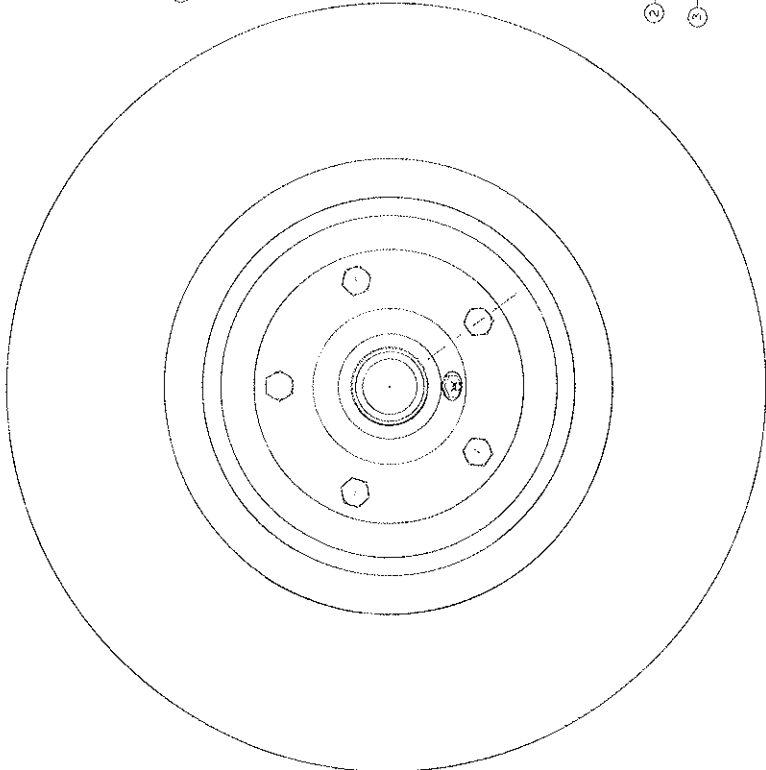
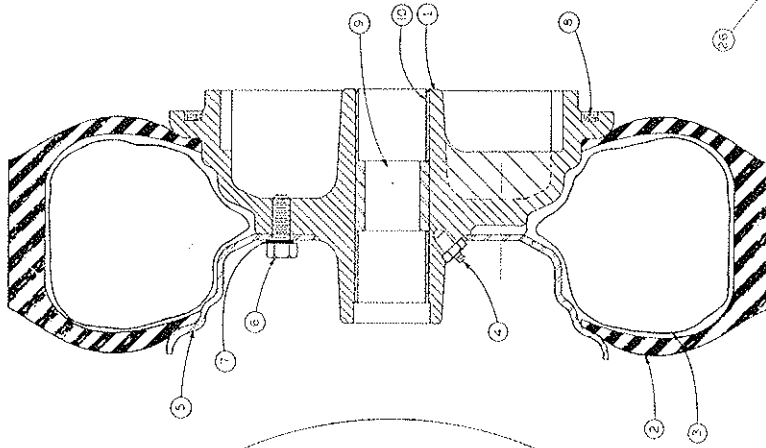


Fig. 10

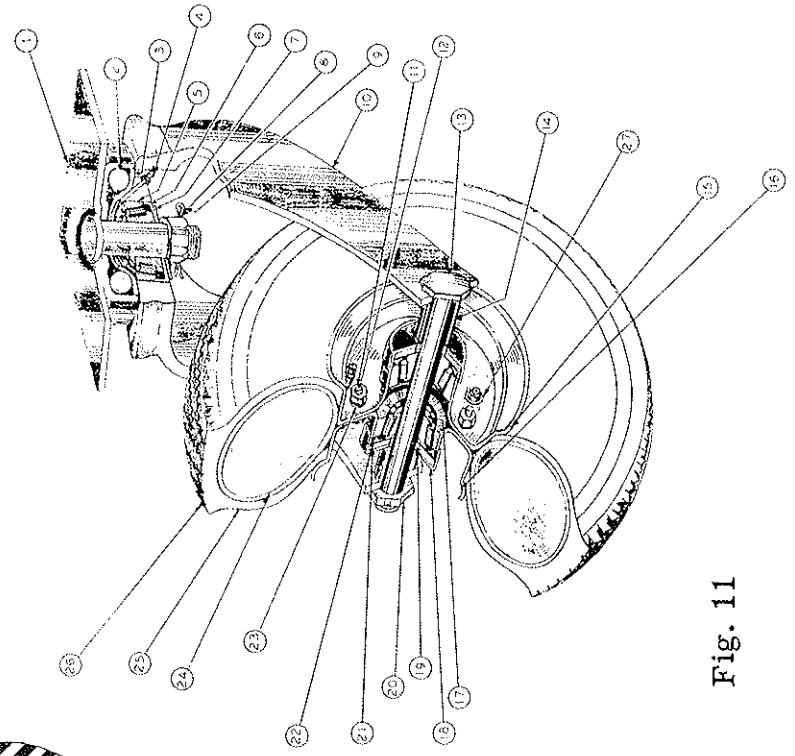


Fig. 11

PART No.	REF. No.	FIG. No.	VIEW	PAGE	DESCRIPTION	No. REQ. PER ASSY.	TOTAL REQ. PER UNIT
47-219-A-12	18	5		7	Safety Chain	1	1
48-75-A	9	6	A-A	8	Washer — Special	1	2
48-75-A	7	7	A-A	8	Washer — Special	1	2
48-78-C	8	9		9	Pillow Block	2	2
48-79-C	1	10		10	Wheel	2	2
48-80-LF	1	6		8	Side Plate L.H.	1	1
48-81-RF	1	7		8	Side Plate R.H.	1	1
48-87-B	8	6	A-A	8	Axle	1	2
48-87-B	6	7	A-A	8	Axle	1	2
48-99-A	21	8		9	Pinion Cover	2	2
48-103-A	18	8		9	Pinion	2	2
48-107-A	13	9		9	Pawl	6	6
48-117-A	29	4		6	Clutch Pin ( $\frac{3}{8}$ dia. x $1\frac{1}{2}$ long)	3	3
48-130-A	2	10		10	Tire (16 x 5 — 4 ply)	2	2
48-131-A	3	10		10	Inner Tube (16 x 5)	2	2
48-132-A	5	10		10	Wheel Rim Valve Side	2	2
48-281-A	23	8		9	Clutch Link Assembly — Note: *Made up of the following parts	1	1
*51-42-A-1	23	8		9	Link ( $\frac{1}{4}$ -28 L.H. thd.)	1	1
*52-153-A	23	8		9	Turnbuckle	1	1
*345-416	23	8		9	Hex Nut	1	1
*51-42-A	23	8		9	Link ( $\frac{1}{4}$ -28 R.H. thd.)	1	1
48-282-A	11	1		4	Hook	12	12
48-300-A	5	9		9	Washer — Special	4	4
48-339-A	20	5		7	Driv-Lok Pin	2	2
49-114-A	17	5		7	Driv-Lok Pin	1	1
49-116-A	2	6	A-A	8	Guard Assembly	1	1
49-116-A-1	2	7	A-A	8	Guard Assembly	1	1
49-117-B	13	6		8	Segments	2	3
49-117-B	13	7		8	Segments	1	3
49-118-B	12	7		8	Segments	1	1
49-121-B	21	5		7	Pillow Block	2	2
49-122-A	3	8		9	Roller	2	2
49-124-A	29	5		7	Worm Pivot Block	1	1
49-126-A	14	5		7	Worm Adjusting	1	1
49-127-C	32	8		9	Worm Adjusting Bracket	1	1
49-130-A	22	8		9	Clutch Handle	1	1
49-180-A	11	8		9	Bearing	2	2
49-184-A	31	4		6	Clutch Spring	2	2
49-185-A	30	4		6	Ball $\frac{1}{2}$ dia.	2	2
49-190-A-1	4	9		9	Bearing Inner Race	6	6
49-190-A-2	16	9		9	Bearing Shell Outer Race	2	6
49-190-A-2	10	10		10	Bearing Shell Outer Race	4	6
49-191-A	7	9		9	Oil Seal	1	2
49-200-B	28	5		7	Movable Cover	1	1
49-204-B	16	5		7	Adjusting Knob	1	1
49-310-B	2	4		6	Clutch Plate	1	1
49-311-A	7	4		6	Spacer Bushing (Stationary)	1	1
49-312-A	9	4		6	Spacer Bushing (Movable)	1	1
49-314-B	1	4		6	Reel Tube and Bearing Assembly	1	1
49-314-B-1	4	4		6	Reel Tube and Flanges (Weld)	1	1
49-314-B-8	25	4		6	Roller Bearing Assembly	2	2
49-314-B-6	26	4		6	Closure	2	2
49-314-B-9	27	4		6	Inner Closure	2	2
49-338-A	11	4		6	Alemite Fitting #1680	2	2
49-339-A	8	4		6	Driv-Lok Pin	1	1
49-340-A					Allen Wrench $\frac{3}{16}$ Hex		1
49-373-C	12	4		6	Brush Bracket	18	18
49-417-A	16	4		6	Brush Bracket Cap	18	18
49-428-A	14	9		9	Shoulder Bolt	6	6
50-114-LE	8	5		7	Fender L.H.	1	1
50-115-RE	9	5		7	Fender R.H.	1	1
50-116-D	20	5		7	Lift Assembly	1	1
50-117-C	12	1		4	Tongue Hitch Assembly	1	1
50-120-B	13	1		4	Tongue Bracket	1	1
50-128-A	19	1		4	Hitch Pin	1	1
50-129-A	27	5		7	Movable Cover Rod	1	1
50-131-A	5	8		9	Top and Rear Tie Rod	2	2
50-132-A	2	8		9	Front Tie Rod	1	1
50-133-A	8	10		10	Felt Seal	2	2

PART No.	REF. No.	FIG. No.	VIEW	PAGE	DESCRIPTION	No. REQ. PER ASSY.	TOTAL REQ. PER UNIT
50-134-A	15	8		9	Clutch Handle Hook	1	1
50-135-A	11	1		4	Rear Baling Rod	6	6
50-136-A	11	1		4	Front Baling Rod	6	6
50-137-C	11	1		4	Baling Canvas Assembly Complete	6	6
					*Made up of following parts		
*50-135-A	11	1		4	Rear Baling Rod	6	6
*50-136-A	11	1		4	Front Baling Rod	6	6
*50-138-C	11	1		4	Canvas	6	6
*48-282-A	11	1		4	Hook	12	12
*530-14-10	11	1		4	Sheet Metal Screws	24	24
50-138-C	11	1		4	Canvas	6	6
50-139-B	22	5		7	Slats	11	11
50-230-A	11	3	A-A	6	Special Washer	1	1
50-234-A	9	10		10	Spacer	2	2
50-246-B	19	4		6	Clutch Sub-Assembly	1	1
50-247-B	28	4		6	Clutch Sleeve	1	1
50-248-A	29	4		6	Clutch Collar Assembly	1	1
					*Made up of the following		
*50-249-B	29	4		6	Collar	1	1
*48-117-A	29	4		6	Pin $\frac{3}{8}$ dia. x $1\frac{1}{2}$ long	3	3
*50-253-A	29	4		6	Pin $\frac{1}{2}$ dia. x $\frac{1}{2}$ long	1	1
50-249-B	29	4		6	Collar	1	1
50-250-B	21	4		6	Clutch Fork	1	1
50-251-A	20	4		6	Clutch Shoe	2	2
50-252-B	6	4		6	Reel Shaft	1	1
50-253-A	29	4		6	Clutch Spring Pin	1	1
50-255-F	6	5		7	Sweeper Unit Assembly	1	1
51-42-A	23	8		9	Link $\frac{1}{4}$ -28 R.H. thd.	1	1
51-42-A-1	23	8		9	Link $\frac{1}{4}$ -28 L.H. thd.	1	1
51-101-D	2	5		7	Swivel Caster Complete	2	2
51-101-D-1	1	11		10	Top Plate, Cup and King Pin Assembly	1	2
51-101-D-2	2	11		10	Steel Ball $\frac{1}{2}$ dia.	20	40
51-101-D-3	3	11		10	Differential Race	1	2
51-101-D-4	4	11		10	Grease Fittings	1	2
51-101-D-5	5	11		10	Timken Bearings	1	2
51-101-D-6	6	11		10	Grease Seal Cap	1	2
51-101-D-7	7	11		10	Grease Seal Washer	1	2
51-101-D-8	8	11		10	Slotted Hex Nut $\frac{3}{8}$ -11	1	2
51-101-D-9	9	11		10	Cotter Pin $\frac{1}{8}$ x $1\frac{1}{4}$	1	2
51-101-D-10	10	11		10	Fork and Race Assembly	1	2
51-101-D-11	11	11		10	Hex Nut SAE $\frac{3}{8}$ -24	4	8
51-101-D-12	12	11		10	Bolt Hex Head $\frac{3}{8}$ -24 NF	4	8
51-101-D-13	13	11		10	Axle Bolt $\frac{3}{8}$ dia.	1	2
51-101-D-14	14	11		10	Axle Spacer	2	4
51-101-D-15	15	11		10	Flange — Valve Side	1	2
51-101-D-16	16	11		10	Flange — Opposite Side	1	2
51-101-D-17	17	11		10	Timken Bearing	2	4
51-101-D-18	18	11		10	Oil Seal Cap	2	4
51-101-D-19	19	11		10	Spacer	2	4
51-101-D-20	20	11		10	Hex Jam Nut $\frac{3}{8}$ -18 SAE	1	2
51-101-D-21	21	11		10	Felt Oil Seal	2	4
51-101-D-22	22	11		10	Oil Seal Spacer	2	4
51-101-D-23	23	11		10	Lock Washer	4	8
51-101-D-24	24	11		10	Tube, Valve and Valve Cap	1	2
51-101-D-25	25	11		10	Tire — 10 x 3.50	1	2
51-101-D-26	26	11		10	Tire, Tube and Wheel Complete	1	2
51-101-D-27	27	11		10	Grease Fitting	1	2
51-101-D-28	28	11		10	Caster Swivel Fork Assembly Complete	1	2
52-36-A	3	9		9	Washer Spacer	2	2
52-51-C-1	12	9		9	Drive Gear	2	2
52-61-B	10	9		9	Gasket	2	2
52-99-B	5	1	A-A	4	Rubber Hood Extension	4	4
52-100-B	3	1	A-A	4	Hood Stiffener (Drilled)	1	1
52-101-C	2	1	A-A	4	Hood	1	1
52-102-B	4	1	A-A	4	Hood Stiffener (Tapped)	1	1
52-128-A	31	2	G-G	5	Shoulder Rivet	1	2
52-153-A	23	8		9	Turnbuckle	1	1
53-165-A	30	2	G-G	5	Cup Spring Washer	1	2
54-71-E	1	1		4	Canopy Assembly	1	1
54-72-RB	2	2		5	Side Panel Assembly R.H.	1	1

PART No.	REF. No.	FIG. No.	VIEW	PAGE	DESCRIPTION	No. REQ. PER ASSY.	TOTAL REQ. PER UNIT
54-72-LB	3	2		5	Side Panel Assembly L.H.	1	1
54-79-B	16	2		5	Angle Support	1	1
54-80-B	15	2		5	Panel — Lower Front	1	1
54-81-B	1	3		6	Panel — Upper Front	1	1
54-82-LB	2	3		6	Upper Screen Support Panel L.H.	1	1
54-82-RB	3	3		6	Upper Screen Support Panel R.H.	1	1
54-83-B	25	2	A-A	5	Rear Screen Support Panel	1	1
54-84-B	4	3		6	Screen-Canopy Sub-Assembly	2	2
54-85-B	17	2		5	Front Canvas Rack	1	1
54-86-B	6	3	A-A	6	Rear Canvas Rack	1	1
54-87-LB	21	2	G-G	5	Support Assembly L.H.	1	1
54-87-RB	22	2	G-G	5	Support Assembly R.H.	1	1
54-88-LB	27	2	G-G	5	Bracket L.H.	1	1
54-88-RB	28	2	G-G	5	Bracket R.H.	1	1
54-89-A	29	2	G-G	5	Lock Lever	1	2
54-91-B	23	2	G-G	5	Handle Stop	1	1
54-92-B	26	5	B	7	Shield — Frame to Side	2	2
54-94-B	10	8	A-A	9	Airflow Shield	1	1
54-95-A	8	8		9	Shield Spacer	2	2
54-96-B	5	3	A-A	6	Center Screen Support	1	1
54-97-E	1	5		7	Frame Assembly (Welded)	1	1
54-193-A	4	2	C	5	Rubber Cushion	4	4
54-222-A	26	2	A-A	5	Support	1	1
54-223-B	20	2	B	5	Rear Screen Panel Support Assembly	1	1
55-125-F	1	8		9	L.H. Side Plate Sub-Assembly	1	1
55-126-F	13	8		9	R.H. Side Plate Sub-Assembly	1	1
55-127-E	12	8		9	Reel Tube Assembly	1	1
55-128-F	1	9		9	Machine Sub-Assembly	1	1
55-173-F	1	2		5	Frame and Unit Assembly	1	1
56-77-C	7	8		9	Support Sub-Assembly	1	1
56-78-C	2	9		9	Drive Gear Sub-Assembly	2	2
56-79-D	6	9		9	Wheel Sub-Assembly	2	2
56-80-B	11	9		9	Brush Strip Assembly	18	18
56-82-A	26	5	B	7	Reinforcement	2	2
56-83-B	26	5	B	7	Shield Sub-Assembly	2	2
					*Made up of the following parts		
*54-92-B	26	5	B	7	Shield — Frame to Side	2	2
*56-82-B	26	5	B	7	Reinforcement	2	2
*66-416-8	26	5	B	7	Sq. Head Bolt ¼-20 x ½	4	
*936-416	26	5	B	7	Int. Tooth Lock Washer ¼	4	
*335-416	26	5	B	7	Hex Nut ¼-20	4	
56-85-F	18	2		5	Front Upper Panel Sub-Assembly	1	1
65-616-24	17	4		6	Hex Head Bolt ⅝-16 x 1½	36	36
66-416-8	8	1		4	Sq. Head Bolt ¼-20 x ½	4	70
66-416-8	19	2	E-E	5	Sq. Head Bolt ¼-20 x ½	31	70
66-416-8	19	2	F-F	5	Sq. Head Bolt ¼-20 x ½	5	70
66-416-8	19	2	G-G	5	Sq. Head Bolt ¼-20 x ½	3	70
66-416-8	7	3		6	Sq. Head Bolt ¼-20 x ½	17	70
66-416-8	10	5		7	Sq. Head Bolt ¼-20 x ½	10	70
66-416-12	24	2	G-G	5	Sq. Head Bolt ¼-20 x ¾	1	4
66-416-12	24	2	A-A	5	Sq. Head Bolt ¼-20 x ¾	2	4
66-416-12	8	3	A-A	6	Sq. Head Bolt ¼-20 x ¾	1	4
66-416-16	5	2	B&C	5	Sq. Head Bolt ¼-20 x 1	4	4
66-416-24	24	8		9	Sq. Head Bolt ¼-20 x 1½	1	1
66-416-28	27	8		9	Sq. Head Bolt ¼-20 x 1¾	1	1
66-516-12	23	5	A	7	Sq. Head Bolt ⅝-18 x ¾	22	22
66-516-16	6	1	A-A	4	Sq. Head Bolt ⅝-18 x 1	5	5
66-516-20	33	8		9	Sq. Head Bolt ⅝-18 x 1¼	2	2
66-516-24	12	2	D	5	Sq. Head Bolt ⅝-18 x 1½	4	4
66-616-16	6	10		10	Sq. Head Bolt ⅝-16 x 1	10	10
66-616-24	9	2	C	5	Sq. Head Bolt ⅝-16 x 1½	2	2
66-616-32	13	4		6	Sq. Head Bolt ⅝-16 x 2	18	18
66-816-20	14	1		4	Sq. Head Bolt ½-13 x 1¼	2	10
66-816-20	3	5		7	Sq. Head Bolt ½-13 x 1¼	8	10
66-816-24	7	5		7	Sq. Head Bolt ½-13 x 1½	8	8
66-1216-40	17	1		4	Sq. Head Bolt ¾-10 x 2½	1	1
280-9	18	4		6	Woodruff Key #9	1	3
280-9	17	8		9	Woodruff Key #9	2	3
286-A-3	13	5		7	Alemite Fitting #1792	4	10
286-A-3	30	8		9	Alemite Fitting #1792	4	10

PART No.	REF. No.	FIG. No.	VIEW	PAGE	DESCRIPTION	No. REQ. PER ASSY.	TOTAL REQ. PER UNIT
286-A-3	4	10		10	Alemite Fitting #1792	2	10
290-A-616	31	8		9	Gits Drive Oiler #503	1	1
335-416	10	1		4	Hex Nut ¼-20	4	83
335-416	8	2	B	5	Hex Nut ¼-20	4	83
335-416	8	2	C	5	Hex Nut ¼-20	2	83
335-416	8	2	E-E	5	Hex Nut ¼-20	33	83
335-416	8	2	F-F	5	Hex Nut ¼-20	5	83
335-416	8	2	G-G	5	Hex Nut ¼-20	5	83
335-416	10	3	A-A	6	Hex Nut ¼-20	18	83
335-416	12	5		7	Hex Nut ¼-20	10	83
335-416	26	8		9	Hex Nut ¼-20	2	83
335-516	14	2	D	5	Hex Nut ⅝-18	4	32
335-516	5	4		6	Hex Nut ⅝-18	4	32
335-516	25	5	A	7	Hex Nut ⅝-18	11	32
335-516	25	5	B	7	Hex Nut ⅝-18	4	32
335-516	25	5	C	7	Hex Nut ⅝-18	7	32
335-516	35	8		9	Hex Nut ⅝-18	2	32
335-616	11	2	C	5	Hex Nut ⅜-16	2	28
335-616	15	4		6	Hex Nut ⅜-16	18	28
335-616	16	8		9	Hex Nut ⅜-16	2	28
335-616	15	9		9	Hex Nut ⅜-16	6	28
340-1216	18	1		4	Hex Jam Nut ¼-10	1	5
340-1216	12	6	A-A	8	Hex Jam Nut ¼-10	2	5
340-1216	10	7	A-A	8	Hex Jam Nut ¼-10	2	5
345-416	23	8		9	Hex Jam Nut ¼-28	1	1
355-816	16	1		4	Sq. Nut ½-13	2	18
355-816	5	5		7	Sq. Nut ½-13	16	18
380-232-8	29	8		9	Cotter Pin ⅝ x ½	2	2
380-332-12	20	1		4	Cotter Pin ⅝ x ¾	2	3
380-332-12	19	5		7	Cotter Pin ⅝ x ¾	1	3
380-632-20	4	8		9	Cotter Pin ⅝ x 1¼	2	2
505-416-8	20	8		9	Flat Head Mach. Screw ¼-20 x ½	4	4
505-516-16	3	4		6	Flat Head Mach. Screw ⅝-18 x 1	4	4
515-416-12	22	4		6	Rd. Head Screw ¼-20 x ¾	2	6
515-416-12	6	6	B-B	8	Rd. Head Screw ¼-20 x ¾	2	6
515-416-12	4	7	B-B	8	Rd. Head Screw ¼-20 x ¾	2	6
515-416-16	4	6	A-A	8	Rd. Head Screw ¼-20 x 1	2	4
515-416-16	11	7	A-A	8	Rd. Head Screw ¼-20 x 1	2	4
530-14-10	11	1		4	Rd. Head Sheet Metal Screw 14 x ⅝	24	24
564-C-516-6	10	4		6	Allen Head Set Screw ⅝-18 x ⅜	4	4
564-C-616-6	6	8		9	Allen Head Set Screw ⅝-16 x ⅜	22	22
564-C-616-24	14	8		9	Allen Head Set Screw ⅝-16 x 1½	1	1
936-416	9	1		4	Int. Tooth Lock Washer ¼	4	89
936-416	7	2		5	Int. Tooth Lock Washer ¼	45	89
936-416	9	3	A-A	6	Int. Tooth Lock Washer ¼	18	89
936-416	23	4		6	Int. Tooth Lock Washer ¼	2	89
936-416	11	5		7	Int. Tooth Lock Washer ¼	10	89
936-416	7	6	A-A	8	Int. Tooth Lock Washer ¼	4	89
936-416	5	7	A-A	8	Int. Tooth Lock Washer ¼	4	89
936-416	25	8		9	Int. Tooth Lock Washer ¼	2	89
936-516	7	1		4	Int. Tooth Lock Washer ⅝	5	37
936-516	13	2	D	5	Int. Tooth Lock Washer ⅝	4	37
936-516	4	4		6	Int. Tooth Lock Washer ⅝	4	37
936-516	24	5	A	7	Int. Tooth Lock Washer ⅝	22	37
936-516	34	8		9	Int. Tooth Lock Washer ⅝	2	37
936-616	10	2	C	5	Int. Tooth Lock Washer ⅝	2	66
936-616	14	4		6	Int. Tooth Lock Washer ⅝	54	66
936-616	7	10		10	Int. Tooth Lock Washer ⅝	10	66
936-816	15	1		4	Int. Tooth Lock Washer ½	2	18
936-816	4	5		7	Int. Tooth Lock Washer ½	16	18
945-10	28	8		9	Plain Washer #10	2	2
945-416	6	2	B-A-C	5	Plain Washer ¼	14	14
945-916	15	5		7	Plain Washer ⅝	1	1
945-1216	11	6	A-A	8	Plain Washer ¾	1	4
945-1216	9	7	A-A	8	Plain Washer ¾	1	4
945-1216	9	8		9	Plain Washer ¾	2	4
997-1216	19	8		9	Retaining Ring ¾	2	2
997-1416	9	9		9	Retaining Ring ⅝	2	2

