

# OWNER'S GUIDE



## VACUUM SWEEPER VAC-35 GASOLINE ENGINE MODEL NO. PV-8705-I/C



**READ THESE INSTRUCTIONS  
BEFORE SETTING UP AND OPERATING MACHINE  
BE SAFE. PROTECT YOUR FAMILY, YOUR FRIENDS, YOURSELF.  
OBSERVE ALL SAFETY INSTRUCTIONS.**

**PARKER SWEEPER COMPANY**

**Box 1728**

**Springfield, Ohio 45501**

# TO THE OWNER

These instructions were written to assist you in the assembly and operation of your Vac-35. **READ THE INSTRUCTIONS** thoroughly **BEFORE** attempting to assemble and operate the machine so that you are familiar with the complete procedure and the safety precautions.

## RULES FOR SAFE OPERATION



The following safety precautions are suggested to prevent damage to the equipment or injury to the operator or nearby persons.

1. Do not allow anyone to operate the Vac-35 without proper instructions.
2. Do not permit children to operate the Vac-35.
3. Do not sweep too close to fire. Ingesting hot ashes or cigarette butts will ignite the Bag.
4. Stop the Engine before reaching into the Intake Housing or Discharge Chute to dislodge sticks or other debris.
5. Stop the Engine before attempting to make any adjustment or performing any maintenance work on the Vac-35.
6. When working on the Engine, always remove the Spark Plug Wire from the Engine and attach it to the V shaped Clip on the Engine head.
7. Do not run the Engine in an enclosed area. Exhaust gases contain carbon monoxide, an odorless and deadly poison.
8. Do not fill the Fuel Tank while the Engine is running. Spilling gasoline on a hot Engine may cause a fire or an explosion.
9. While machine is running, do not leave it unattended.
10. Before using the machine to pick up debris, police the area to be cleaned first, picking up any large objects such as glass, toys, dog bones and chunks of wood. If these pass through the machine, they could damage the Impeller, bend the Engine Crankshaft or put a hole in the Bag.
11. Avoid using the machine in dangerous places where steep slopes or loose debris will endanger the safety of the operator or other people.
12. Keep all Nuts, Bolts and Screws tight to be sure the Vac-35 is in safe working condition.
13. Follow the maintenance instructions as outlined in this manual.
14. Do not start or run Engine unless Bag and Intake Housing are properly secured as injury may result.

## IMPORTANT

**ALWAYS GIVE THE FOLLOWING INFORMATION WHEN  
ORDERING REPAIR PARTS:**

- |                               |                        |
|-------------------------------|------------------------|
| 1. Part Number (Not Ref. No.) | 3. Description of Part |
| 2. Quantity Needed            | 4. Model No. of Vac-35 |

**If unable to obtain parts locally, write down above information and send to:  
PARKER SWEEPER CO., BOX 1728, SPRINGFIELD, OHIO 45501**

Your unit is right hand (R.H.) or left hand (L.H.) as you stand behind it.

# ASSEMBLY INSTRUCTIONS

**YOUR SAFETY IS OUR CONCERN. READ ALL SAFETY RULES AND OPERATING INSTRUCTIONS BEFORE ATTEMPTING TO OPERATE THIS EQUIPMENT. FAILURE TO FOLLOW SAFETY RULES AND OPERATING INSTRUCTIONS MAY RESULT IN SERIOUS INJURY.**

1. The VAC-35 covered in this owner's guide is shipped complete in one box. Follow all instructions on assembly very carefully.
2. Unpack all items from Carton.
3. Tip box over so wheels are toward floor. Pull unit out of box and stand upright.
4. DO NOT discard the carton or any of the inserts until the unit is completely assembled.
5. All hardware is on the unit in its proper location. If something is missing, notify the dealer/distributor where unit was purchased. If unable to purchase parts locally, contact the Parker Sweeper Company.
6. Whenever the terms left or right hand, or "L" and "R" are used, it means from a position standing behind the unit facing forward.

NOTE: Before continuing with instructions in this Owner's Manual, unpack items from small carton. Assemble those items as outlined in Instruction Sheet included in that package.

## HANDLE ASSEMBLY

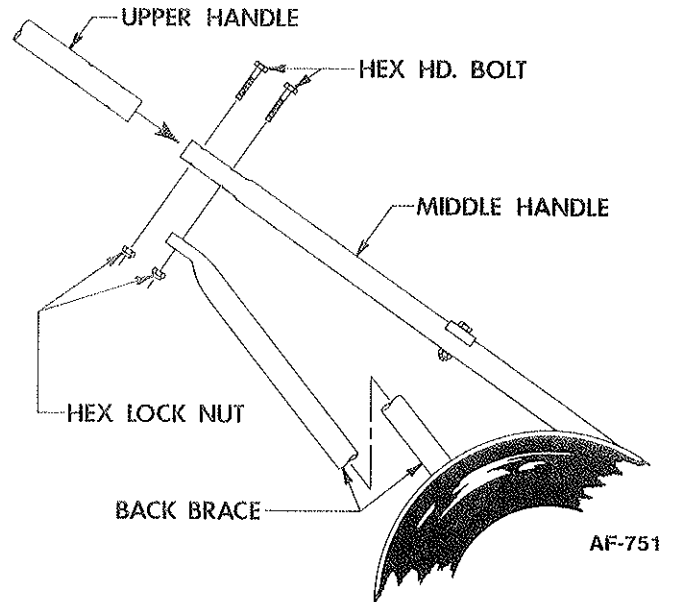
NOTE: See AF-788 Handle Assembly on Plate No. 1359 to the back of this owner's guide for reference to numbers used in the following instructions.

1. Remove Hex Hd. Bolts (15) and Hexagon Lock Nuts (21) from the bottoms of the Upper Handles (2) and (3).
2. Place Upper Handles (2) and (3) over the ends of the Lower Handles (4).
3. Align the lower holes in both Upper and Lower Handles. Replace Hexagon Hd. Bolts (15), removed in step 1, to each of the lower holes.
4. Lift Handles until the Back Braces (5) can be assembled to Bolts (15) assembled in step 3. Assemble Hexagon Lock Nuts (21). DO NOT TIGHTEN.
5. Align the upper holes in both Upper and Lower Handles. Assemble the remaining two Hexagon Hd. Bolts (15) and Hexagon Lock Nuts (21). DO NOT TIGHTEN.

NOTE: Check Alignment of Handle. The Hexagon Lock Nuts have been left loose to allow movement between the holes and the Bolts. Do not bend tubing to accomplish proper alignment.

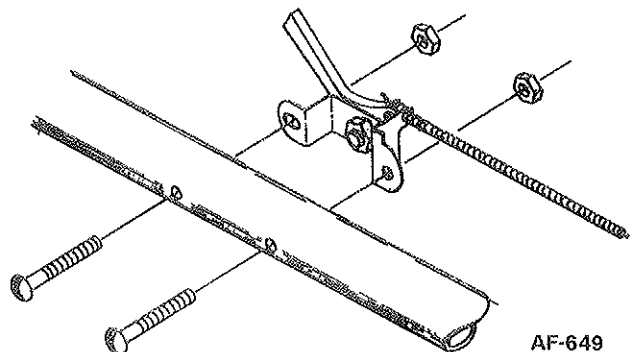
6. Once Handles are aligned, tighten all Hexagon Lock Nuts (21).

NOTE: Nuts should be tightened enough that at least two of the Bolt threads extend through the Nut. It may be necessary to collapse the tubing SLIGHTLY to accomplish this.



## THROTTLE HOOKUP

1. Remove Throttle Control (13) from the right Lower Handle (4).
2. Straighten the Throttle Cable out and run it up the Left Hand Handles (3) and (4).
3. Attach the Throttle Control (13) to the Upper Left Hand Handle (3) with the two Oval Head Screws (14) and Hexagon Nuts (20) furnished.
4. Attach Snap-On Clamps (11) to Handles to secure Throttle Cable.
5. Make sure no bends are less than 8" radius.



## TO ASSEMBLE SPIN-PAK®

NOTE: See AF-794 Housing Assembly on Plate No. 1360 to the back of this owner's guide for reference to numbers used in the following instructions.

**OBSERVE SAFETY RULES AT ALL TIMES. DON'T TAKE CHANCES!**

# ASSEMBLY INSTRUCTIONS (Cont'd.)

1. Remove Hex Hd. Bolts (20), Flatwashers (18), and Lock Nuts (26) from the three upper holes used to secure Retaining Ring (16) to Housing Assembly (1). DO NOT remove the bottom Bolt (20) or Retaining Ring (16) from Housing Assembly (1).
2. Align the holes in Spin-Pak® (2) with three upper holes in Retaining Ring (16) and Housing Assembly (1).
3. Replace hardware removed in step 1 and tighten.

## ATTACHING INTAKE HOUSING

1. Insert Hinge Bosses on Collar of Intake Housing (12) behind the Hinge Extension on Front Cover Assembly (7).
2. Swing Intake Housing (12) to lay flat against Front Cover Assembly (7).
3. Secure by placing Flatwasher (9) and Adjusting Knob (8), on Pivot Bolt, over the Collar of Intake Housing (12) and tighten Adjusting Knob (8).

## IMPORTANT

**WARNING:** The engine contains NO OIL. Read the Engine Instruction Manual carefully before operating the VAC-35. Be sure you know how to start and stop the engine before proceeding further. Do not start the engine until all assembly is finished.

## WARNING

Make a thorough inspection to see that all fastenings are tight and all parts are properly installed. DO NOT start Engine without Intake Housing and Dust Bag in place.

If Engine is started without Intake Housing attached, serious injury may result by drawing clothing or parts of the body into the Fan.

If Engine is run without Spin-Pak® or Dust Bag, small stones or other objects may be picked up and propelled at operator or bystanders through the unprotected opening causing serious injury.

# OPERATING INSTRUCTIONS

## READ SAFETY OPERATING INSTRUCTIONS BEFORE OPERATING EQUIPMENT

1. Heavy concentration of sand and gravel should be avoided. These materials are extremely abrasive, and while the VAC-35 will handle moderate amounts of these materials, it is not designed for heavy applications. Treat your VAC-35 with reasonable care and it will repay you with long, trouble-free service.
2. The VAC-35 will handle most common kinds of debris found around industrial plants, commercial buildings, homes and farms. Acid contaminated materials, magnesium, dust and other DANGEROUS DEBRIS that is considered hazardous should not be handled with the VAC-35 unless approved by a regulating authority considered to be an expert in the handling of such hazardous materials.
3. The efficiency of this unit depends on the breathing capacity of the Dust Bag. Under extremely dusty conditions the bag should be emptied and cleaned frequently. Always empty and clean bag before storing after use. Debris allowed to remain in the bag may cause spontaneous combustion, resulting in an explosion or fire. See Instructions supplied with Dust Bag.

## TO START UNIT

**IMPORTANT:** Read the Engine manual CAREFULLY before operating the VAC-35.

Before starting the engine read and understand the following:

1. Be sure the engine crankcase is filled with the proper type and amount of oil.
2. Spin-Pak® is in place.
3. Dust Bag or Discharge Hose is in place.
4. Intake Housing or Hose Kit is attached to the Fan Housing.

## TO STOP ENGINE

The Stop Switch for the Briggs & Stratton engine on this unit is operated by the Throttle Control Lever. To stop Engine, back off on the Throttle as far as possible; this works as an automatic Stop Switch on the Engine.

**WARNING:** Allow engine to cool 2 or 3 minutes before refueling. Fuel spilled on a hot engine could ignite, resulting in serious damage to the unit and possible injury to the operator.

## SERVICING AND OPERATING INSTRUCTIONS.

Refer to Engine Manufacturer's Service Manual. Careful attention to care of air cleaner and crankcase lubrication instructions will insure longer engine life.

KEEP ENGINE CLEAN.

## LUBRICATION

1. Add a few drops of oil to the Throttle Control Cable and Wire to help keep it operating smoothly.
2. Grease fittings are located in the hubs of the rear wheels. Fresh grease should be added periodically to assure proper lubrication of Wheels.
3. Refer to Engine operating manual for proper lubrication of the Engine.

NOTE: Check all items once a week if unit is used daily.

**DANGER:** Improper use of this equipment may result in serious injury.

When using hose attachment, keep it away from engine exhaust system and other parts of the engine that may be hot enough to burn plastic hose.

## IMPORTANT INFORMATION

The VAC-35 is not equipped with a spark arrestor muffler. If the VAC-35 is to be used in the state of California, the state law requires spark arrestor mufflers be used to comply with Section 4442 of the California Public Resources Code. Contact your service center and have this muffler installed.

**NOTE: FAILURE TO OBSERVE SAFETY INSTRUCTIONS MAY RESULT IN SERIOUS INJURY.**

# WARRANTY INFORMATION

Parker Sweeper Company warrants each new piece of equipment manufactured under its name except the engine, to be free of defects in materials and workmanship under normal use and service. Parker Sweeper Company's obligation is limited to repair or replacement at its option for one (1) year (ninety [90] days for commercial service) from date of purchase.

If trouble should occur, please contact the companies listed, giving them all information: Name of unit purchased from company (Parker VAC PV-8705-I/C); problem with part; when unit was purchased; model number of engine, etc., and your complete return address complete with zip code. Failure to provide complete information will result in unnecessary delay of repair and return of unit. Please contact the following companies that supply Parker Sweeper Co. with parts. Contact the company directly at the address listed if any problems should occur.

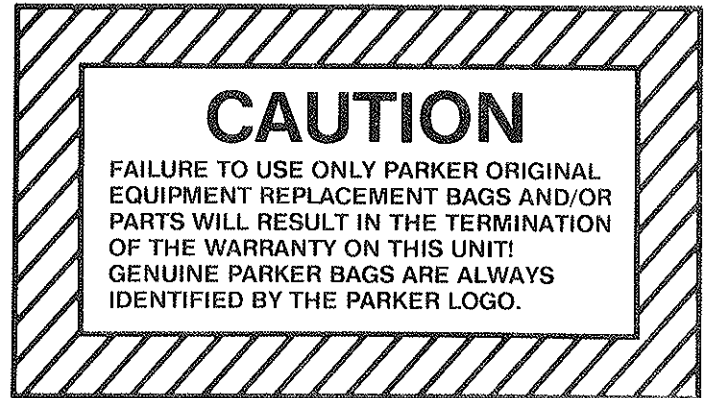
All parts listed are under the manufacturer's name and part number. Replacement parts should be purchased directly from the company listed with a complete description of the part and part number.

Parts listed under the Standard Parts can be purchased from most hardware stores.

Proper assembly of replacement parts is the responsibility of the owner or mechanic doing the work. Parker Sweeper Company warranty only applies to the original purchased unit. Under no circumstances does the warranty extend beyond the original time specified from date of purchase.

## ENGINE:

Briggs & Stratton Company  
P.O. Box 702  
Milwaukee, Wisconsin 53201



## HOW TO ORDER REPAIR PARTS

NOTE: When ordering service parts for any model VAC, follow the instructions listed below. By so doing, you will be assured of receiving the correct part in the shortest possible time.

1. Give the model and serial number found on the back of fan housing or back of chassis on the unit.
2. Write the complete part number as well as the description of the part, and quantity of part required.
3. Whenever the terms "left and right, or L and R" are used herein, it should be understood to mean from a position facing in direction of forward travel.

4. Give detailed shipping instructions, that is: whether shipment is to be parcel post, United Parcel Service, air express, freight or truck.

NOTE: Parker Sweeper Co. is continually striving to improve its products. We must, therefore, reserve the right to make improvements or changes, when it becomes practical and possible to do so, without incurring any obligation to make changes or additions to the equipment previously sold.

## OPTIONAL ACCESSORIES

**NOTE:** Accessory No. and Price List can be obtained from a local distributor.

**24" Intake Housing:** For sweeping in narrow aisles or in areas where heavier objects are to be collected.

**36" Intake Housing:** Ideal for sweeping lighter weight debris and in larger, open areas.

**Lumite® Bag:** 10 cu. ft. capacity, polypropylene material. Won't fade, shrink, mildew or rot. Use when gathering damp or wet material.

**Flip-Gate 30" Nose Cone:** Allows convenient and adjustable intake of larger debris and trash.

**Hose Attachment 8" Dia.:** 15 ft. length overall, fits all VAC-35 models. Attaches to impeller housing for cleaning debris from hard-to-reach areas.

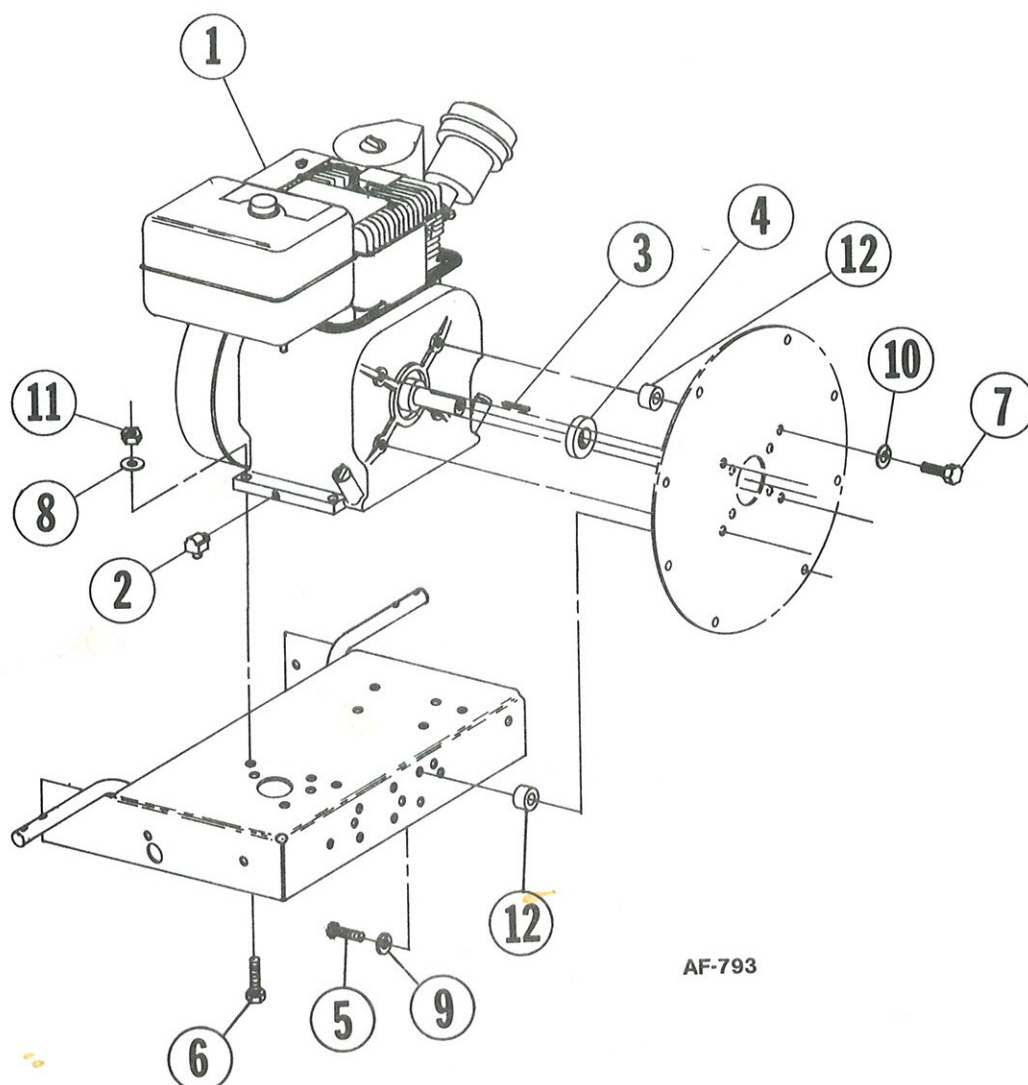
**Hose Attachment 6" Dia.:** 15 ft. length overall, fits all VAC-35 models. Attaches to impeller housing for cleaning debris from hard-to-reach areas.

**Hose Attachment 4" Dia.:** 15 ft. length overall, fits all VAC-35 models. Attaches to impeller housing for cleaning debris from hard-to-reach areas.

**READ SAFETY & OPERATING INSTRUCTIONS BEFORE OPERATING EQUIPMENT**



## ENGINE ASSEMBLY



AF-793

## PARTS LIST

Ref. No.	Part No.	Qty. Per Unit	Description
1	* <del>85-46-D</del> 85-46-D	1	Engine, B&S I/C 5 HP
2	61-25-A	1	Street Elbow 1/4 x 90°
3	61-65-A	1	Fan Key 3/16 sq. x 1 3/4 LG.
4	73-20-A	1	Fan Spacer
** 5	65-416-24	2	Bolt, Hex Hd. 1/4-20 x 1 1/2
** 6	65-516-24	4	Bolt, Hex Hd. 5/16-18 x 1 1/2
** 7	60-516-16	4	Bolt, Hex Hd. 5/16-24 x 1
** 8	945-516	4	Flatwasher, Plain 5/16
** 9	935-416	2	Lockwasher, Spring 1/4
** 10	935-516	4	Lockwasher, Spring 5/16
** 11	365-516	4	Nut, Hex Lock 5/16-18
12	81-42-A	6	Spacer

\*B&amp;S Model No. 132412 Spec. 0222-01

\*\*Items should be purchased through a local hardware store.

Engine  
87-11-D  
Will fit but  
is not an I/C

## HOUSING ASSEMBLY

## PARTS LIST

Ref. No.	Part No.	Qty. Per Unit	Description
1	70-103-D	1	Housing Assembly
2	85-110-B	1	Spin-Pak®
3	64-78-C	8	Anti-Wrap Segment
4	84-239-C	1	Back Plate & Gasket
5	81-194-D	1	Heat Shield
6	61-14-D	1	Fan Wheel
7	SA-1389-D	1	Front Cover Assembly
* 8	80-29-A	1	• Adjusting Knob
* 9	945-816	1	• Flatwasher, Plain 1/2
*10	63-190-A	1	• O-Ring Gasket
11	82-138-B-1	1	Special Washer
12	MA-251-D	1	30" Intake Housing Assembly
**13	73-67-D	1	• Skirt
**14	62-98-C	2	• Guard
**15	80-332-A	15	• Fastener
16	85-59-C	1	Retaining Ring

Items listed below should be purchased through a local hardware store.

17	65-416-12	8	Bolt, Hex Hd. 1/4-20 x 3/4
18	945-416	18	Flatwasher, Plain 1/4
19	364-416	8	Nut, Hex Lock (thin) 1/4-20
20	65-416-16	14	Bolt, Hex Hd. 1/4-20 x 1
21	65-416-20	4	Bolt, Hex Hd. 1/4-20 x 1 1/4
22	65-416-24	2	Bolt, Hex Hd. 1/4-20 x 1 1/2
***23	60-516-16	1	Bolt, Hex Hd. 5/16-24 x 1
24	935-416	16	Lockwasher, Spring 1/4
25	935-516	1	Lockwasher, Spring 5/16
26	365-416	4	Nut, Hex Lock 1/4-20

\*Items 8, 9 and 10 are supplied with item 7, but may be purchased separately.

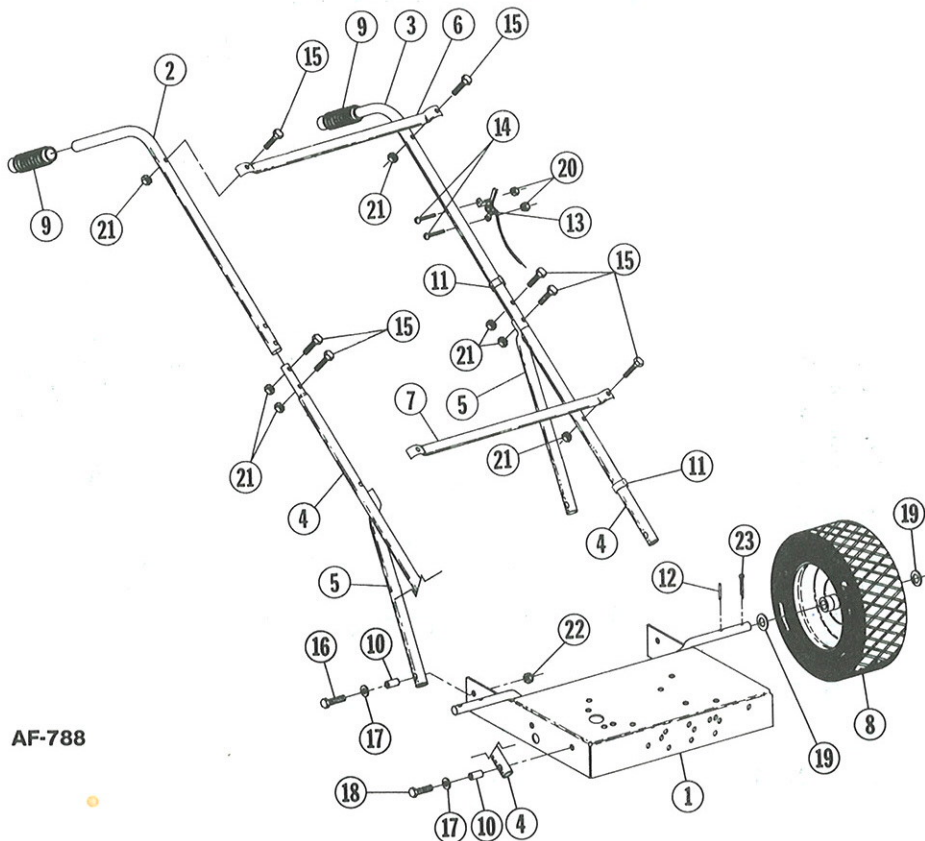
\*\*Items 13, 14 and 15 are supplied with item 12, but may be purchased separately.

\*\*\*Item 23, torque to 18 to 22 ft. lbs.





## HANDLE ASSEMBLY



AF-788

## PARTS LIST

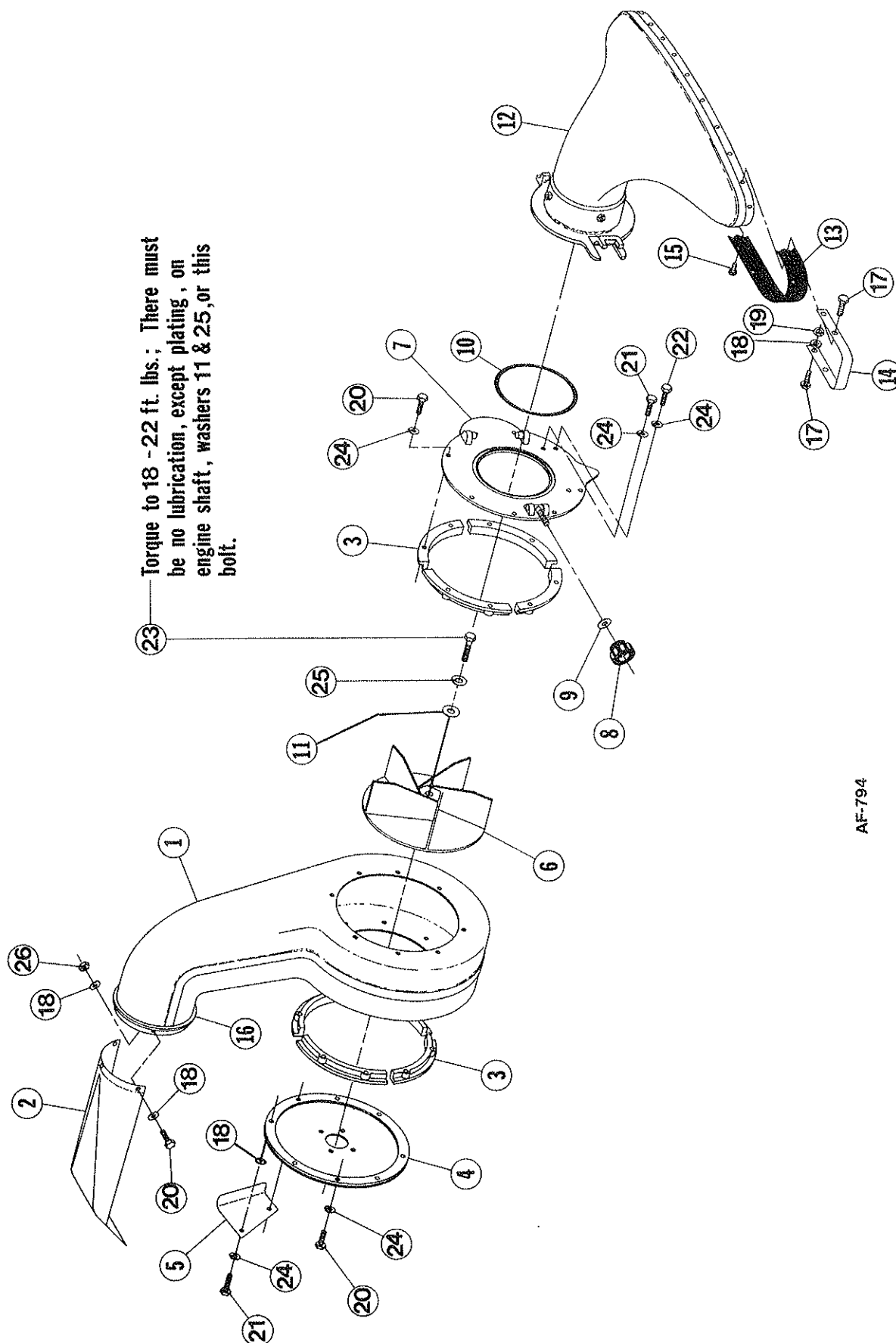
Ref. No.	Part No.	Qty. Per Unit	Description
1	88-60-C	1	Chassis Weldment
2	80-321-C	1	Upper Handle R.H.
3	83-18-C	1	Upper Handle L.H.
4	88-47-B	2	Lower Handle
5	88-48-C	2	Handle Back Brace
6	81-04-B	1	Cross Brace, Upper
7	81-47-B	1	Cross Brace, Lower
8	SA-231-B	2	Wheel Assembly
9	80-232-A	2	Handle Grip
10	80-238-A	4	Insert
11	80-276-A	2	Clamp, Snap-On
12	84-103-A	2	Roll Pin .199/.194 Dia. x 1 1/2 Lg.
13	83-25-B-41	1	Throttle Control Assembly

Items listed below should be purchased through a local hardware store.

14	515-10-20	2	Screw, Rd. Hd. Mach. 10-24 x 1 1/4
15	65-416-24	8	Bolt, Hex Hd. 1/4-20 x 1 1/2
16	65-516-32	2	Bolt, Hex Hd. 5/16-18 x 2
17	945-516	4	Flatwasher, Plain 5/16
18	65-516-24	2	Bolt, Hex Hd. 5/16-18 x 1 1/2
19	945-1216	4	Flatwasher, Plain 3/4
20	365-10	2	Nut, Hex Lock 10-24
21	365-416	8	Nut, Hex Lock 1/4-20
22	365-516	2	Nut, Hex Lock 5/16-18
23	380-432-20	2	Cotter Pin

*Wheel Bldg  
69-222-A  
2 repl./wheel*

## HOUSING ASSEMBLY



AF-794