

# Instruction Sheet

## Kit Number: 78591500

### BRUSH CUTTER TRANSPORT TIRE KIT

For use with 32" Rough-Cut Mower Attachment



**WARNING: FAILURE TO FOLLOW INSTRUCTIONS** could result in personal injury and/or damage to unit.

Read, understand, and follow all safety practices in Operator's Manual before beginning.

### Package Contents

Check the contents of your kit for the parts listed below. Also see Figure 1.

Item	Description	Qty	Ariens P/N
1	Front Wheel Weldment	1	09133553
2	Wheel Assembly	1	07101112
3	Caster Fork	1	03855153
4	3/8"-16 x 1 1/4" Hex Bolt	1	05901724
5	3/8" x 3/32" Lock Washer	1	06300116
6	3/8" x 1 1/2" x 1/8" Flat Steel Washer	1	06401035
7	Caster Tube	1	D13003
8	1/2"-13 x 5 1/2" Hex Bolt	1	05901632
9	1/2"-13 Nylon-Locking Flange Nut	1	06500810
10	Pin	2	09133600
11	Retaining Ring	2	00967057
12	3/4" x 1 5/16" x 1/8" Flat Steel Washer	4	06401037
13	3/16" Lynch Pin	2	00967212

### BEFORE INSTALLATION

1. If brush mower attachment is installed, stop engine, remove key and engage parking brake.
2. Wait for all moving parts to stop and for hot parts to cool.
3. Disconnect spark plug wire.

### INSTALLATION

**IMPORTANT:** Illustrations show unit in the operating position.

1. Secure caster fork (item 3) to front wheel weldment (item 1) using one 3/8" x 1 1/2" flat steel washer (item 6), one 3/8" x 3/32" lock washer (item 5) and one 3/8" x 1 1/4" hex bolt (item 4). See Figure 2.

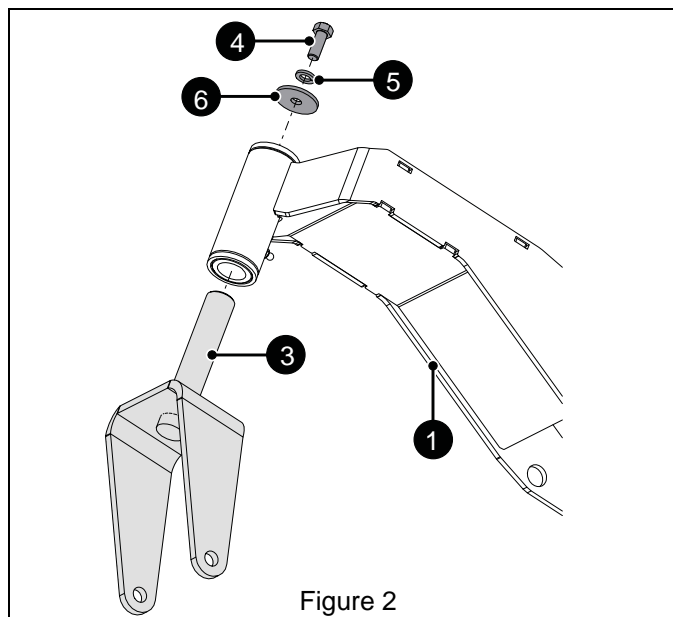


Figure 2

2. Install caster tube (item 7) in wheel assembly (item 2). See Figure 3.

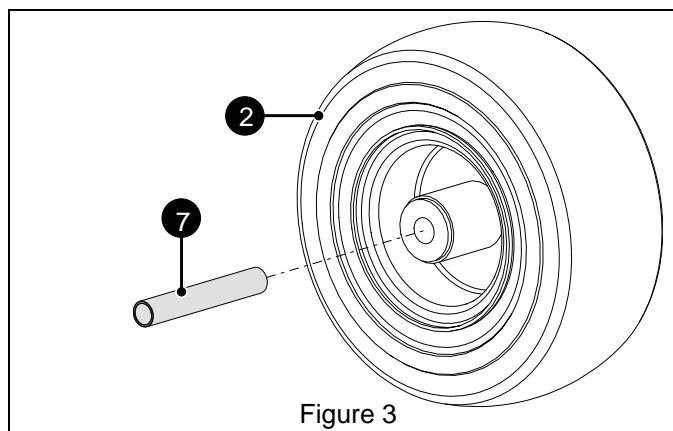


Figure 3

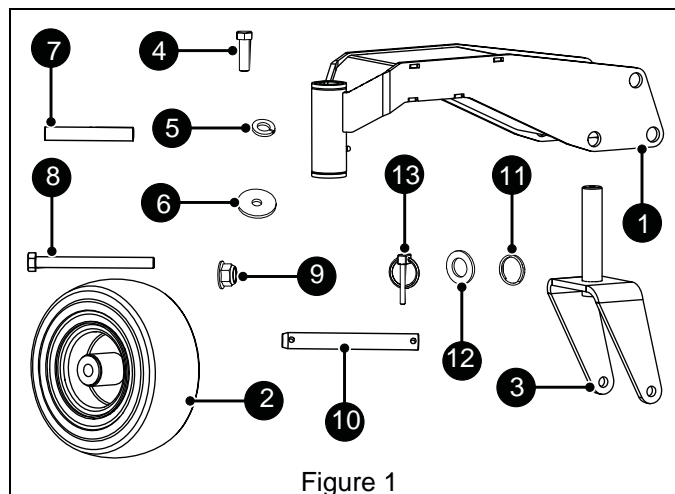
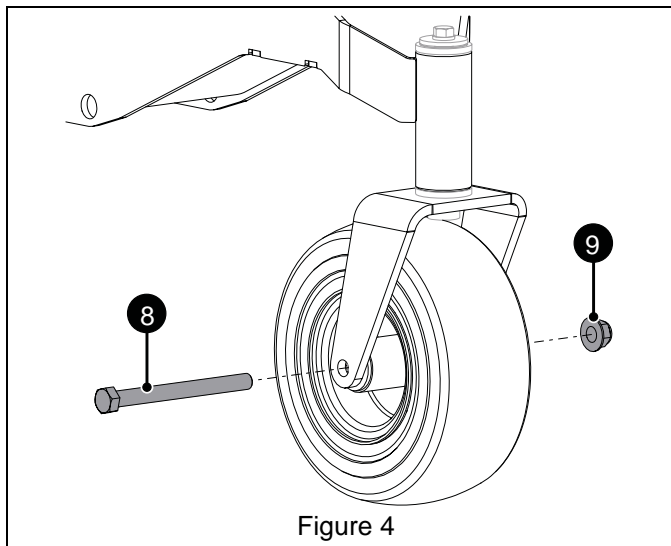
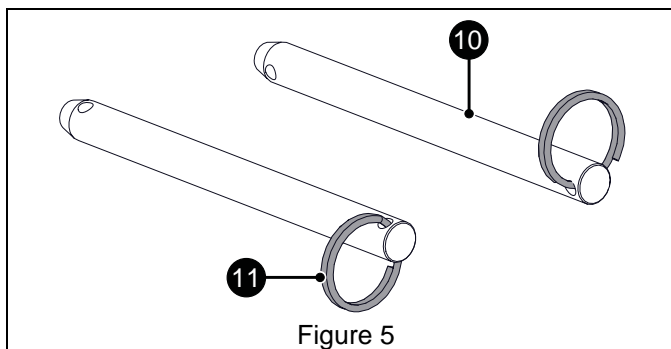


Figure 1

3. Lubricate wheel bearings. See *Lubrication* on page 3.
4. Position wheel in caster and secure with one 1/2" x 5 1/2" hex bolt (item 8) and one 1/2" nylon-locking flange nut (item 9). See Figure 4.

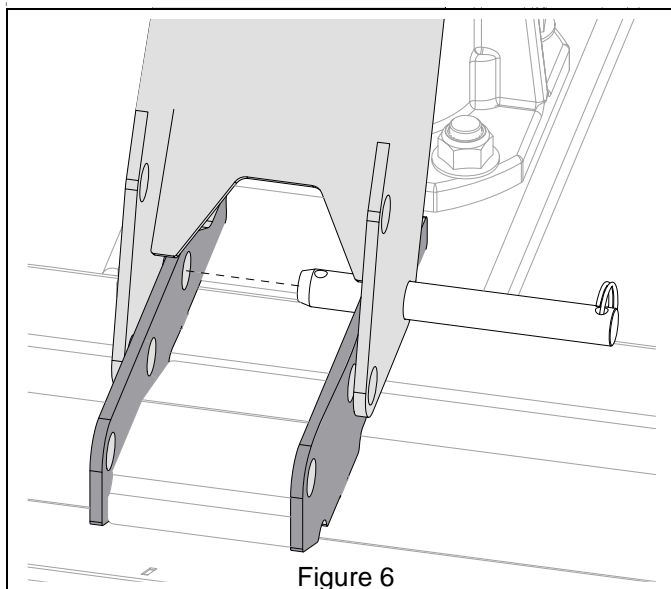


5. Install retaining rings (item 11) through pins (item 10). See Figure 5.

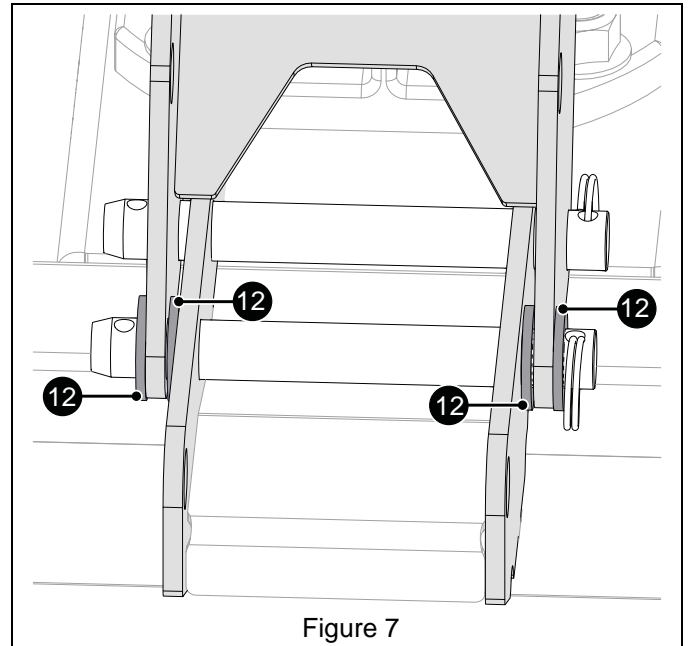


See Figure 6.

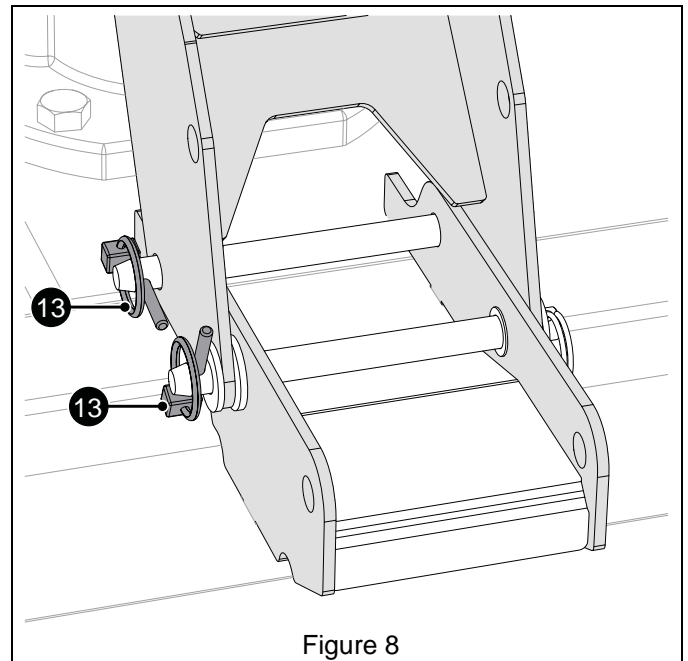
6. Align holes in transport tire assembly and frame.
7. Install pin through rear holes.



8. Install pin through front holes and washers (item 12). Install two 3/4" x 1 5/16" flat steel washers on each side of tire assembly base. See Figure 7.



9. Install lynch pins (item 13). See Figure 8.



10. Reconnect spark plug wire.

## LUBRICATION

Gravely recommends using Gravely Hi-Temp Grease or equivalent to lubricate fittings.

**IMPORTANT:** Wipe each fitting clean before and after lubrication.

1. Apply grease to caster fork at grease zerk. See Figure 9.

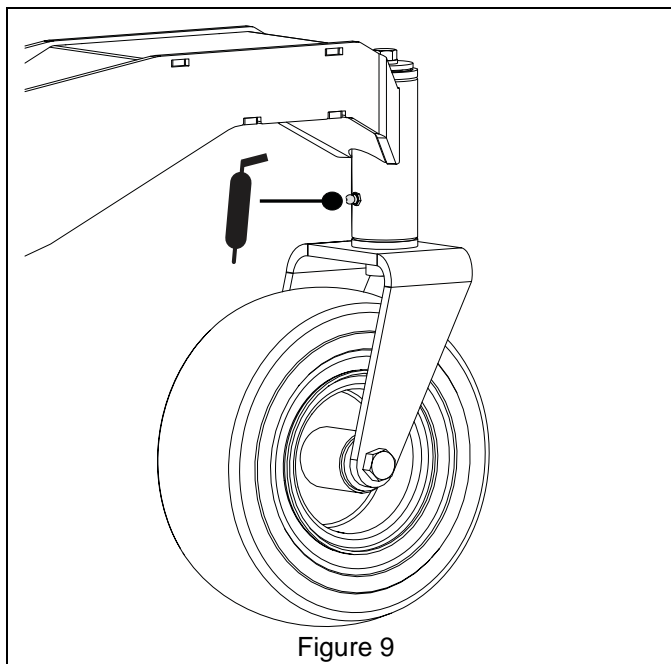


Figure 9

See Figure 10.

2. Remove wheel from caster.
3. Remove end caps.
4. Apply grease to wheel bearings at grease zerk until grease squeezes through seal in the wheel hub.
5. Reinstall end caps.
6. Reinstall wheel.

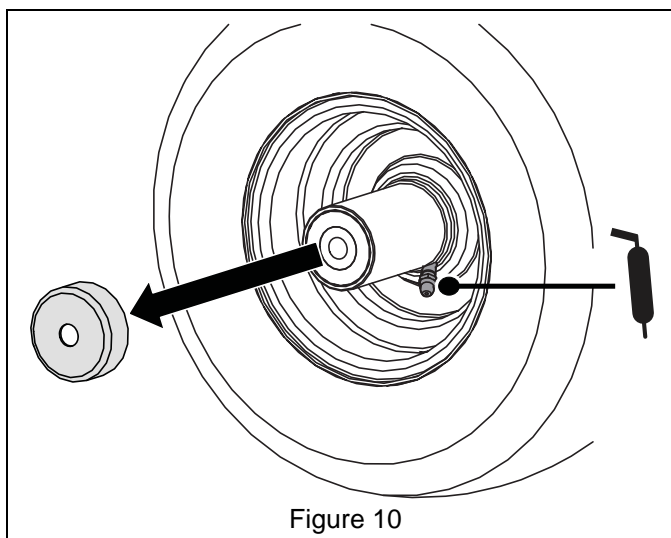
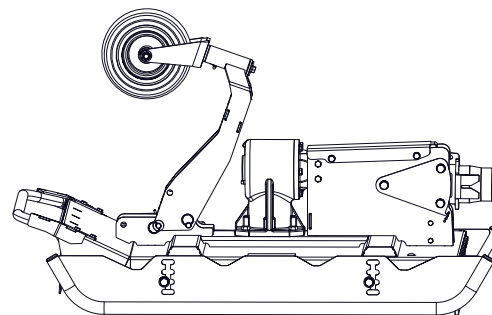


Figure 10

## OPERATION

**NOTICE:** To be used for transport only. Transport tire must be in the up position when operating brush mower attachment. See Figure 11.

Up – Operation with Brush Mower Attachment



Down – Transport Position

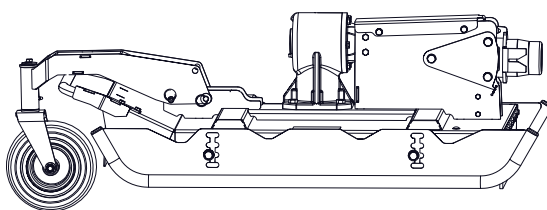


Figure 11

To move from operating position to transport position:

1. Park unit on a flat level surface, ensure the engine is shut off and the parking brake is set.
2. Lift and support front of mower deck.
3. Remove lynch pin from rear pin. See Figure 12.

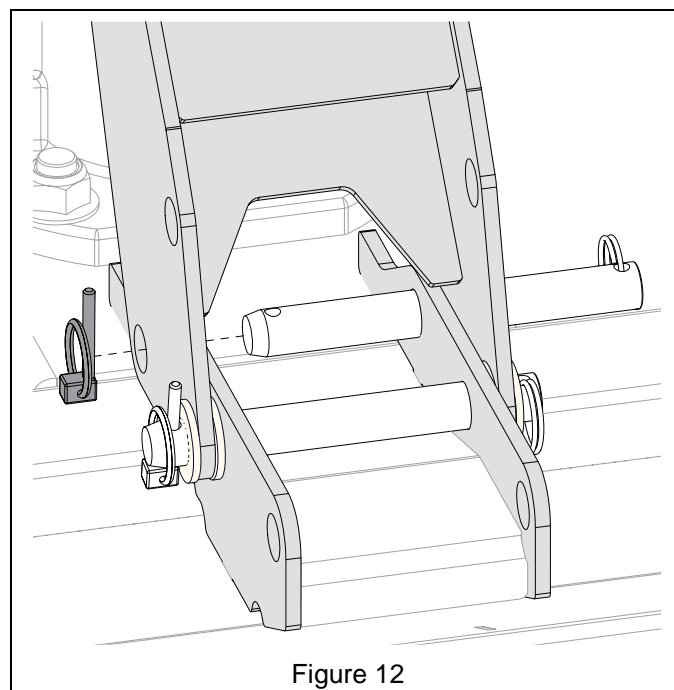
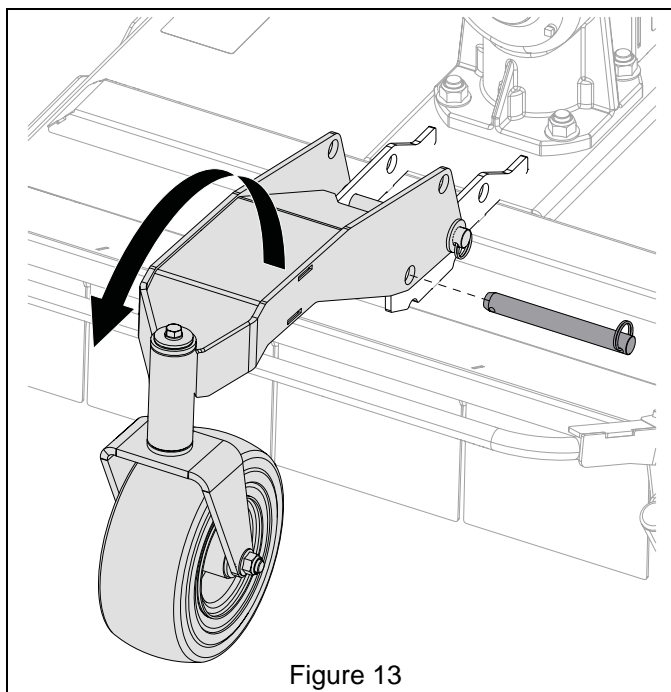


Figure 12

4. Rotate tire assembly forward and reinstall pin through the front holes. See Figure 13.



5. Reinstall lynch pin. See Figure 14.

