

# Instruction Sheet

## Kit Number: 79222300

### FRONT WEIGHT KIT



**WARNING: FAILURE TO FOLLOW INSTRUCTIONS** could result in personal injury and/or damage to unit.  
Read, understand, and follow all safety practices in Operator's Manual before beginning.

### Package Contents

Check the contents of your kit for the parts listed below  
Also see Figure 1.

Item	Description	Qty	AriensCo P/N
1	Counter Weight Plate	5	04422451
2	Cast Iron Weight	1	00172000
3	1/2"-13 x 5 1/2" Hex Bolt	2	05901632
4	17/32" x 1 1/16" Flat Washer	2	06401015
5	1/2"-13 Center Locking Flange Nut	2	06500902

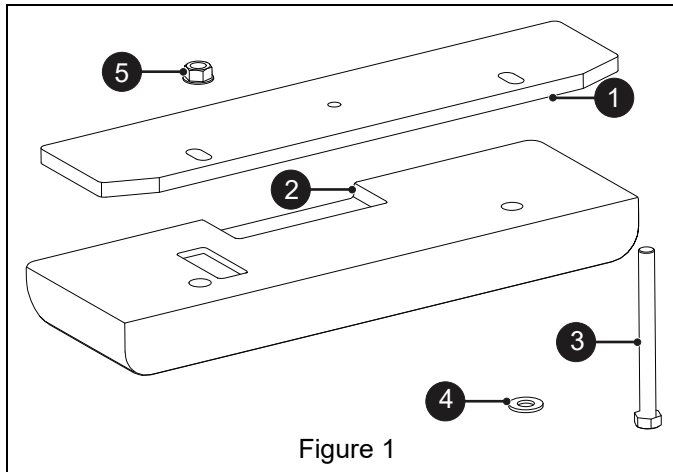


Figure 1

### REMOVAL

1. Park unit on a flat level surface and engage parking brake.
2. Stop engine, remove key and wait for moving parts to stop and for hot parts to cool.
3. Disconnect spark plug wires.
4. Rotate operator footrest up and lock in service position.
5. Remove and retain two round head square neck bolts, two center locking flanged nuts and two tapping screws securing front bumper. Remove and retain bumper. See Figure 2.

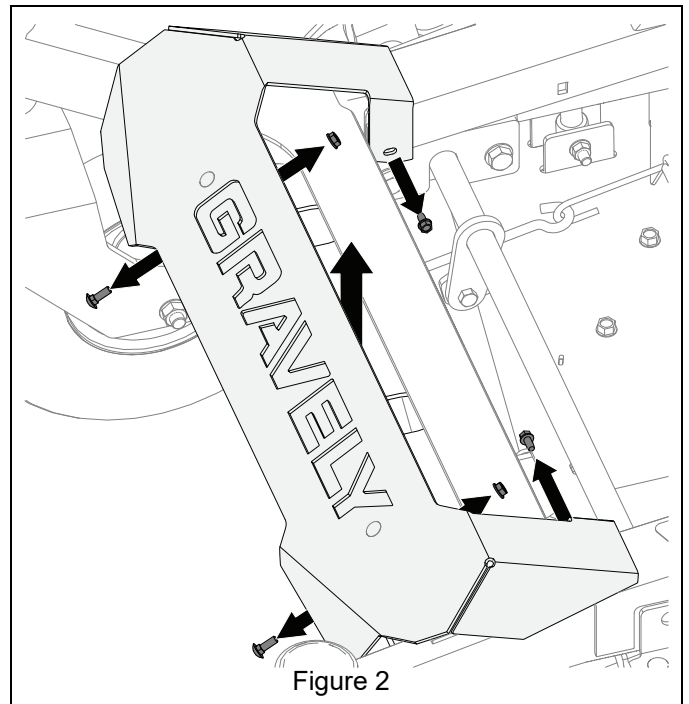
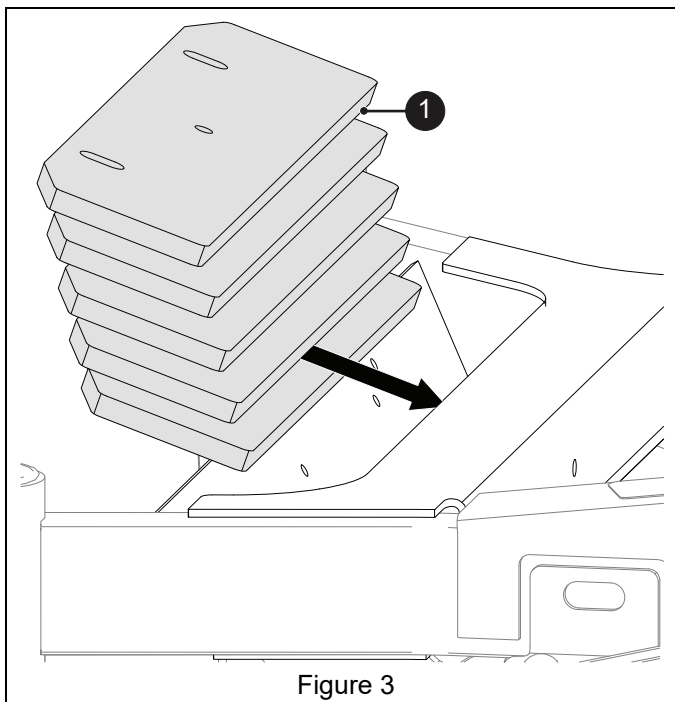


Figure 2

## INSTALLATION

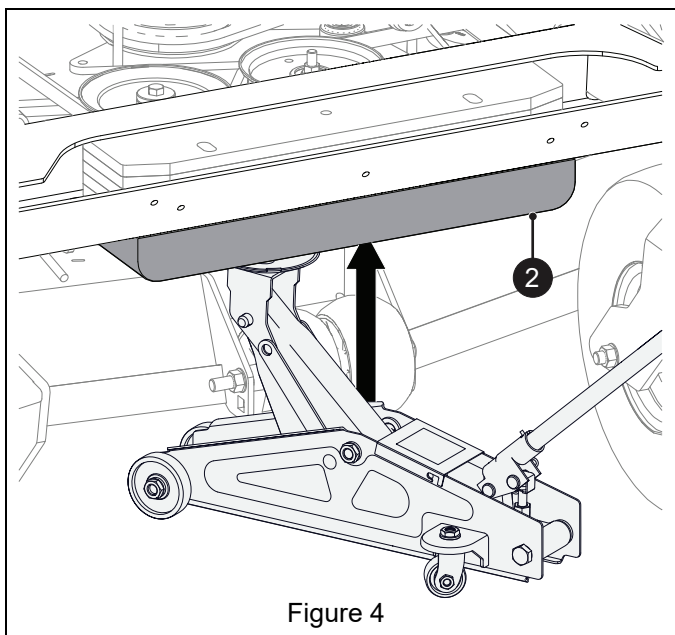
1. Insert five counter weight plates (item 1) into frame crossmember pocket and align mounting holes with holes in frame crossmember. Plates are positioned with angled corners facing forward. See Figure 3.

**NOTICE:** Ensure slots in plates align with holes in crossmember for easier hardware installation.

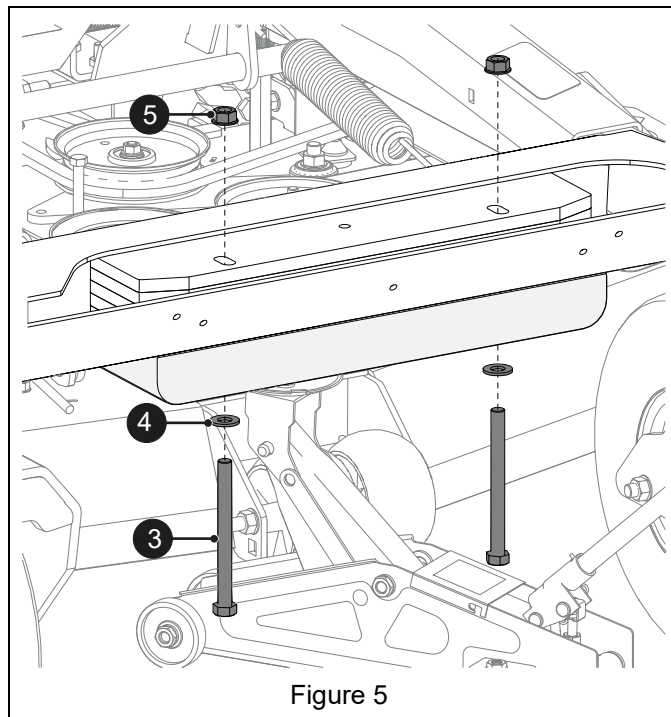


**CAUTION:** Avoid Injury! Cast iron plate weighs 25 kg (55 lb). Use a floor jack or other suitable device to lift and hold weight in position until fasteners can be installed.

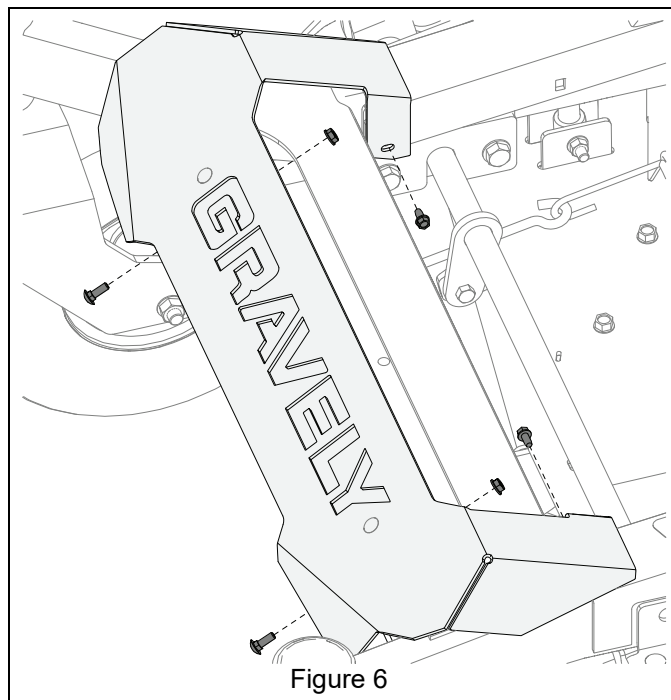
2. Position cast iron weight plate (item 2) under the frame crossmember. See Figure 4.



3. Secure all weight plates with two 1/2" x 5 1/2" hex bolts (item 3), two flat washers (item 4) and two 1/2" center locking flange nuts (item 5). Bolts are inserted through washers from under unit. See Figure 5.



4. Remove floor jack and reinstall front bumper using hardware removed in Removal step 5. See Figure 6.



5. Return operator footrest to operating position.