

Instruction Sheet

Kit Number: 79216400

BAGGER ATTACHMENT KIT – 60" DECK

WARNING: FAILURE TO FOLLOW INSTRUCTIONS could result in personal injury and/or damage to unit.

Read, understand, and follow all safety practices in Operator's Manual before beginning.

NOTICE: Refer to the bagger Operator's Manual for additional installation instructions.

Package Contents

Check the contents of your kit for the parts listed below. Also see Figure 1.

Item	Description	Qty	Ariens P/N
1	V-Belt	1	07200636
2	Counterweight Plate	2	04422451
3	Cast Iron Weight	1	00172000
4	1/2-13" x 4" Hex Bolt	2	05961900
5	17/32" Flat Steel Washer	2	06441900
6	1/2-13" Nyloc Flange Nut	2	06500010
7	Baffle	1	04589851
8	3/8-16 x 3/4" Hex Bolt	2	05959400

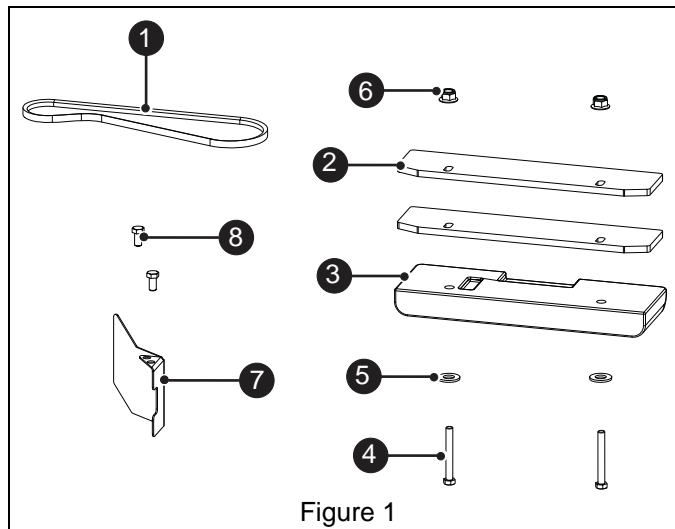


Figure 1

INSTALL COUNTERWEIGHTS

CAUTION: ALWAYS install counterweights on front axle before operating unit with bagger attached.

1. Open footrest panel. Remove and retain four 5/16" nuts securing foot plate. Remove front two nuts using a socket and extension through slots located on underside. Remove foot plate. See Figure 2.

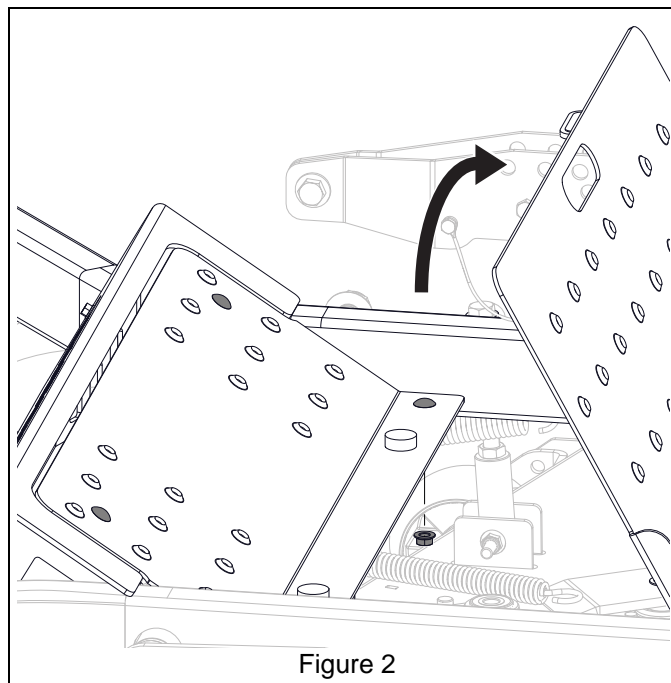


Figure 2

See Figure 3.

2. From under machine install cast iron weight (item 3) with two 17/32" flat steel washers (item 5) and two 1/2 x 4" hex bolts (item 4).
3. From above, install two counterweight plates (item 2) onto two hex bolts. Secure with two 1/2" locking flange nuts (item 6).

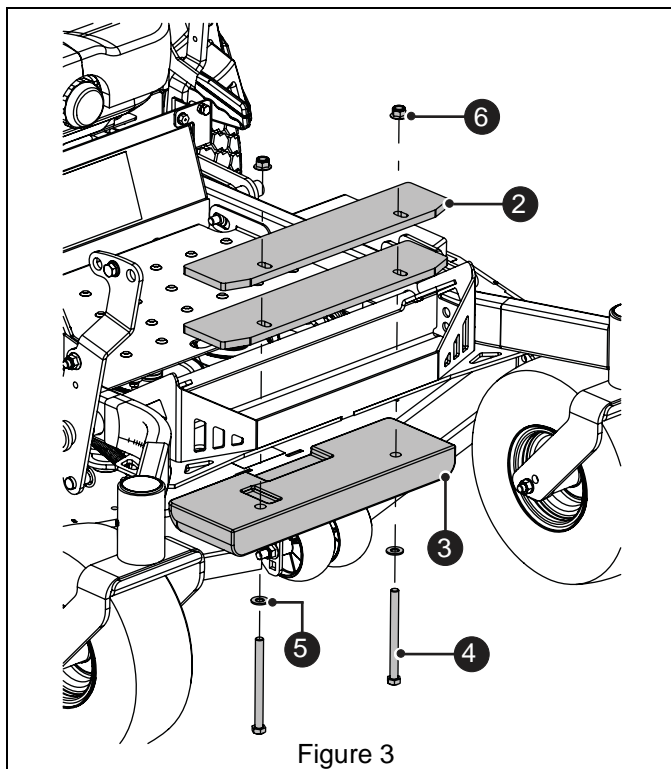


Figure 3

4. Reinstall footplate with retained hardware.

INSTALL FRONT BLOWER BAFFLE

1. Remove and discard front hex bolt and nyloc nut from the idler. See Figure 4.

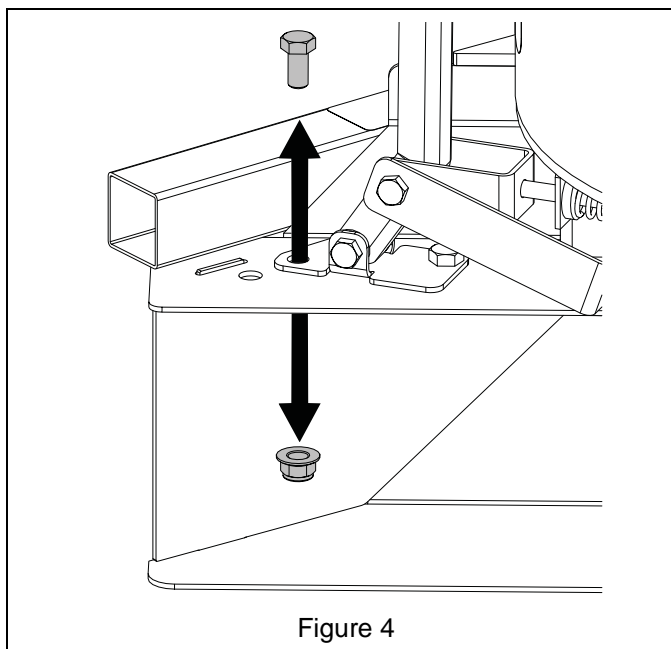


Figure 4

2. Install baffle (item 7) in front of blower housing outlet. Secure with two 3/8 x 3/4" hex bolts (item 8). See Figure 5.

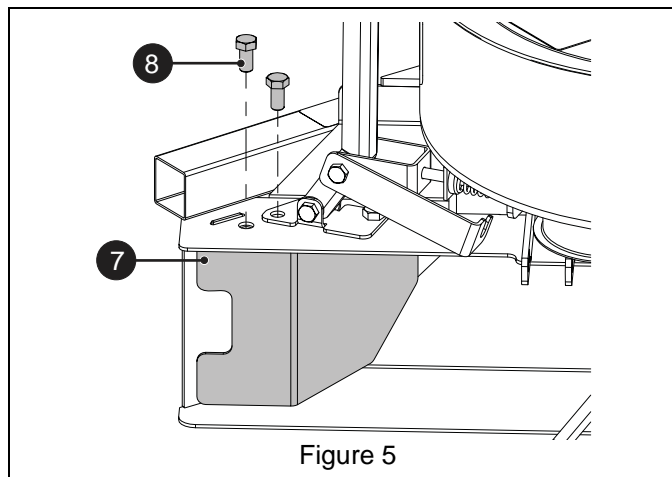


Figure 5

INSTALL V-BELT

1. Place blower belt tensioner in released position.
2. Install V-belt (item 1) around split pulley on blower assembly so that back side of belt contacts idler pulley. See Figure 6.

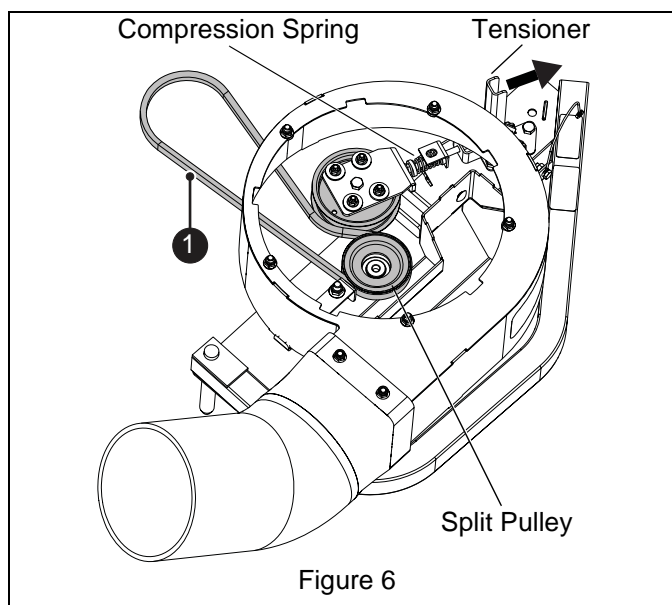


Figure 6

3. Place blower belt tensioner in operating position.

IMPORTANT: Ensure flat side of V-belt contacts idler pulley and the V-side of V-belt contacts split pulley as shown in Figure 7.

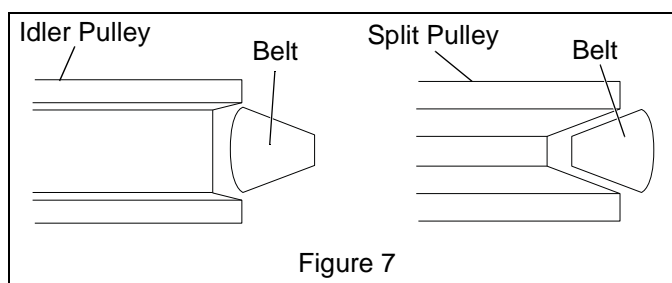


Figure 7