

# Instruction Sheet

## Kit Number: 79215700

### 72" MULCH KIT



**WARNING: FAILURE TO FOLLOW INSTRUCTIONS** could result in personal injury and/or damage to unit.

Read, understand, and follow all safety practices in Operator's Manual before beginning.

### Package Contents

Check the contents of your kit for the parts listed below. Also see Figure 1.

Item	Description	Qty	Ariens P/N
1.	Left Baffle	1	04781251
2.	Discharge Baffle	1	04781051
3.	Right Baffle	1	04995051
4.	Rear Baffle	2	04781151
5.	Mulching Blade	3	04887800
6.	5/16"-18 Nylon Locking Flange Nut	13	06545400
7.	5/16"-18 x 1" Round Head Square Neck Bolt	1	06200231

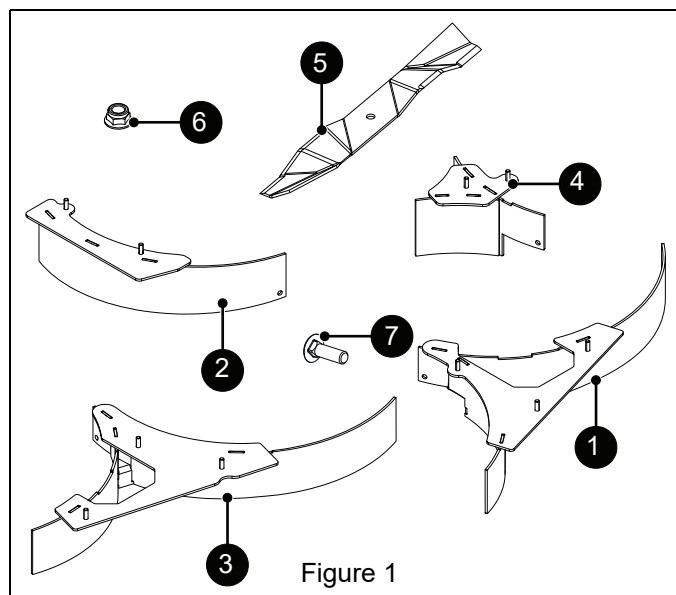


Figure 1

### REMOVAL

1. Park unit on a flat, level surface and engage parking brake.
2. Stop engine, remove key and wait for moving parts to stop and for hot parts to cool.
3. Disconnect spark plug wires.
4. Remove hardware retaining discharge chute assembly and remove chute assembly. Retain all parts for operation without mulch kit. See Figure 2.

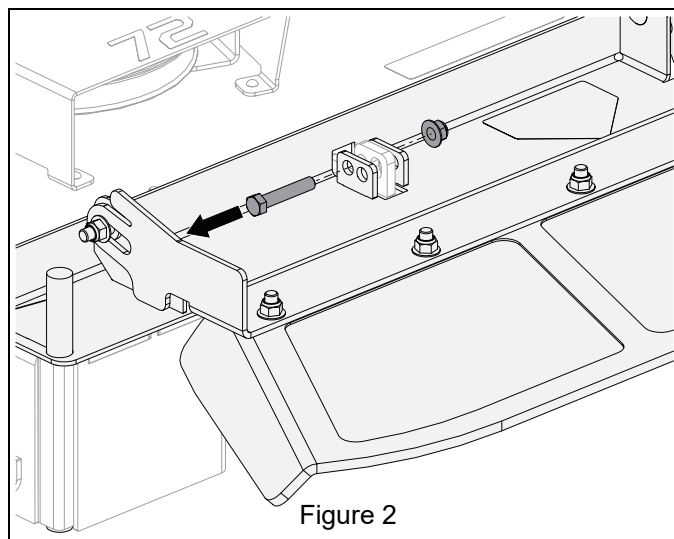


Figure 2

5. Remove ten tapping screws from deck. Retain for operation without mulch kit. See Figure 3.

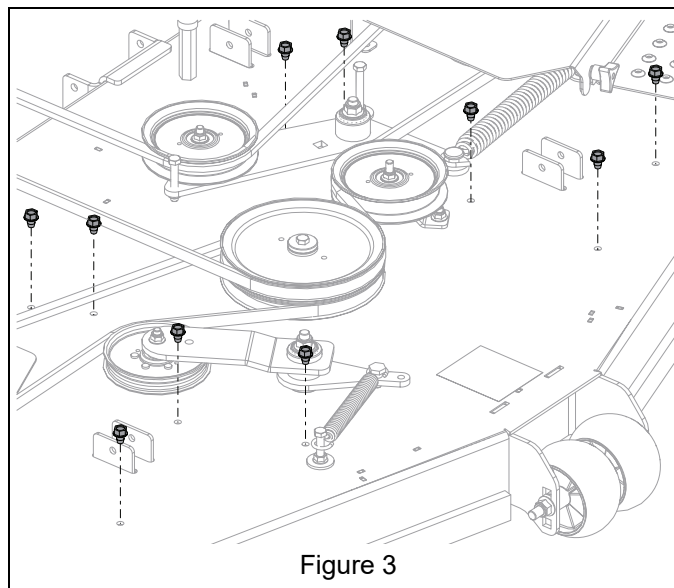


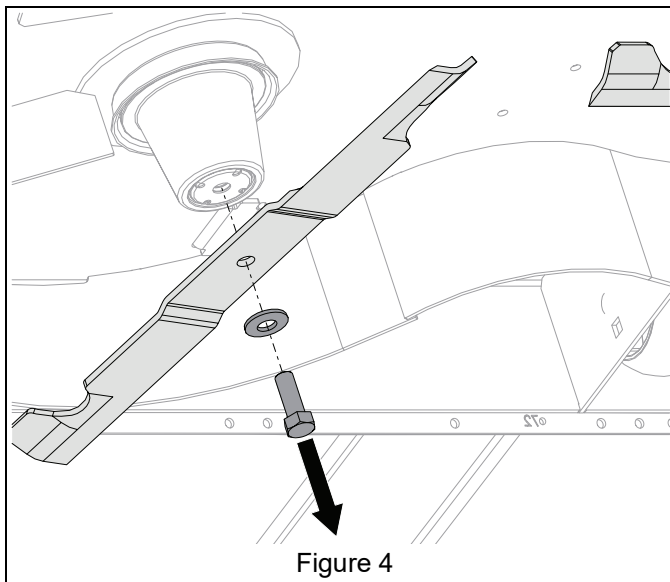
Figure 3



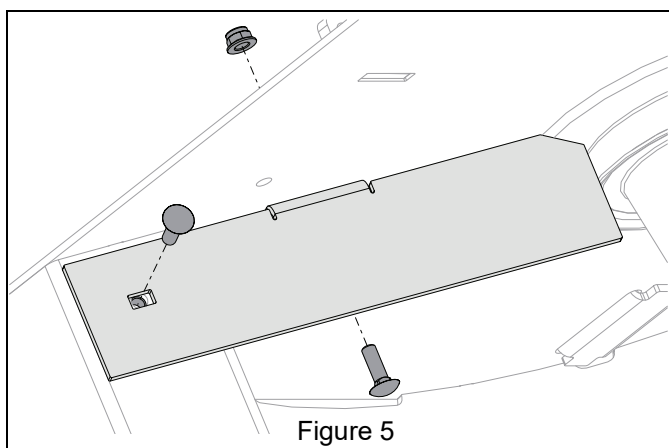
**CAUTION: AVOID INJURY!** Use sturdy gloves or padding to protect hands when working with mower blades.

Rotation of one blade rotates the other blades.

6. Remove and retain hardware retaining mower blades and remove blades. Retain blades for operation without mulch kit. See Figure 4.

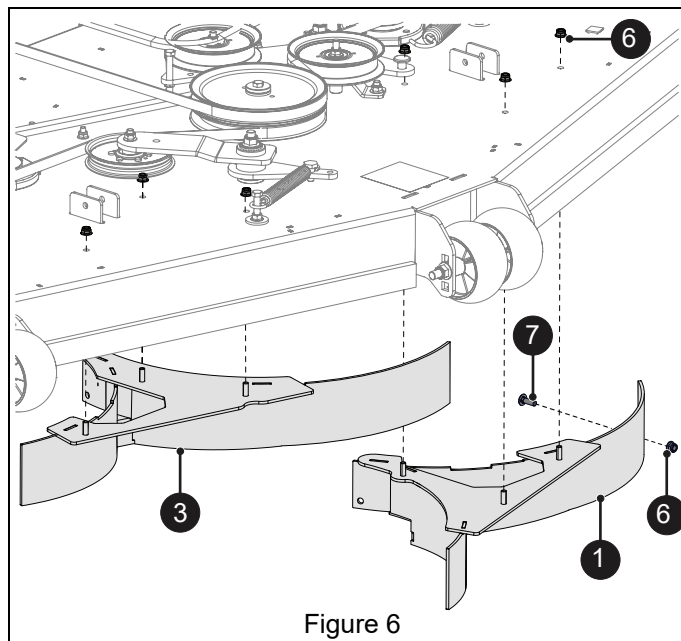


7. Remove hardware retaining discharge baffle and remove baffle. Retain parts for operation without mulch kit. See Figure 5.

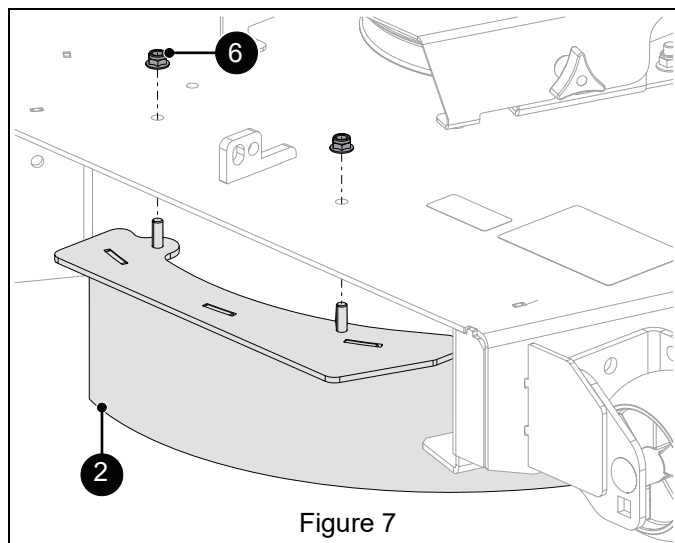


## INSTALLATION

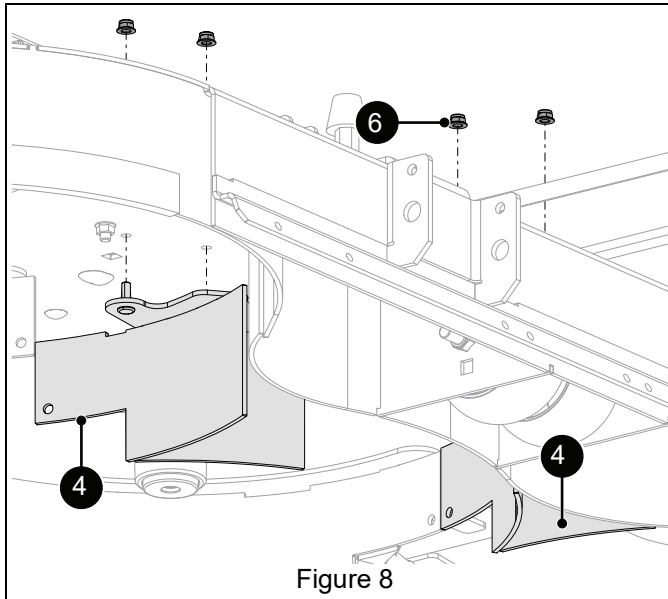
1. Secure left baffle (item 1) to deck with one 5/16" x 1" round head square neck bolt (item 7) and four 5/16" nylon locking flange nuts (item 6). Secure right baffle (item 3) to deck with three 5/16" nylon locking flange nuts (item 6). See Figure 6.



2. Secure discharge baffle (item 2) to deck with two 5/16" nylon locking flange nuts (item 6). See Figure 7.



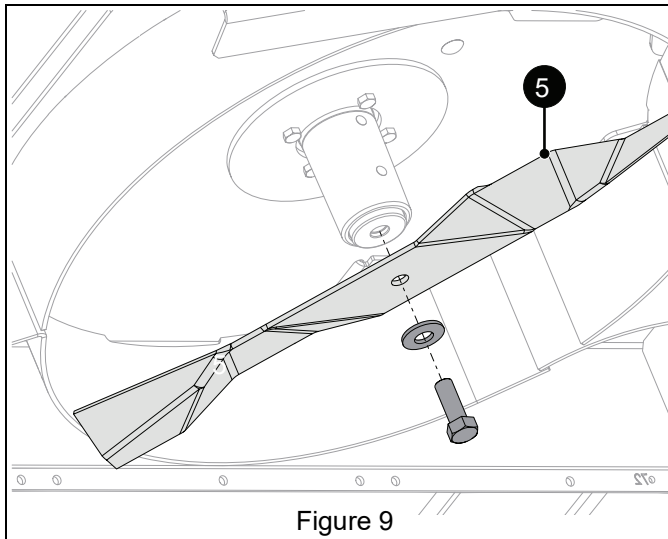
3. Secure rear baffles (item 4) to deck with four 5/16" nylon locking flange nuts (item 6). See Figure 8.



**CAUTION: AVOID INJURY!** Use sturdy gloves or padding to protect hands when working with mower blades.

Rotation of one blade rotates the other blades.

4. Secure one mulching blade (item 5) to each spindle with original blade mounting hardware. Ensure washers are installed with cupped side against blades and torque to 156 N•m – 217 N•m (115 lb-ft – 160 lb-ft). See Figure 9.



5. Rotate blades to verify blades and baffles don't interfere.
6. Reconnect spark plug wires.

## MULCHING TIPS

1. Mow at full throttle and half speed.
2. Mow dry grass only.
3. Keep mower blades sharp.
4. Cut no more than 2.5 cm (1") at a time. For tall grass, mow at a higher cutting height, then make a second or third pass with the deck set to the desired cutting height.
5. Clean the underside of deck after each mowing, but DO NOT wash with high-pressure water.