

Instruction Sheet

Kit Number: 79108800

HD / PRO-TURN Z SUSPENSION SEAT KIT



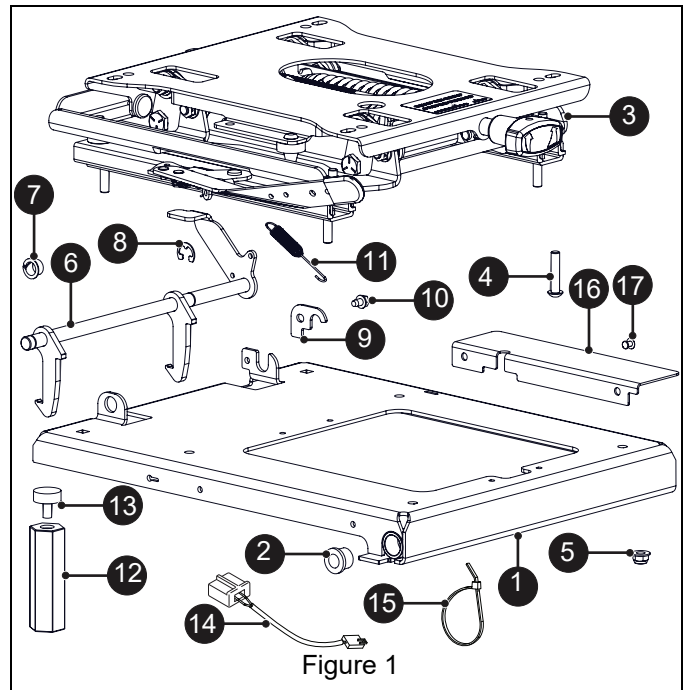
WARNING: FAILURE TO FOLLOW INSTRUCTIONS could result in personal injury and/or damage to unit.

Read, understand, and follow all safety practices in Operator's Manual before beginning.

Package Contents

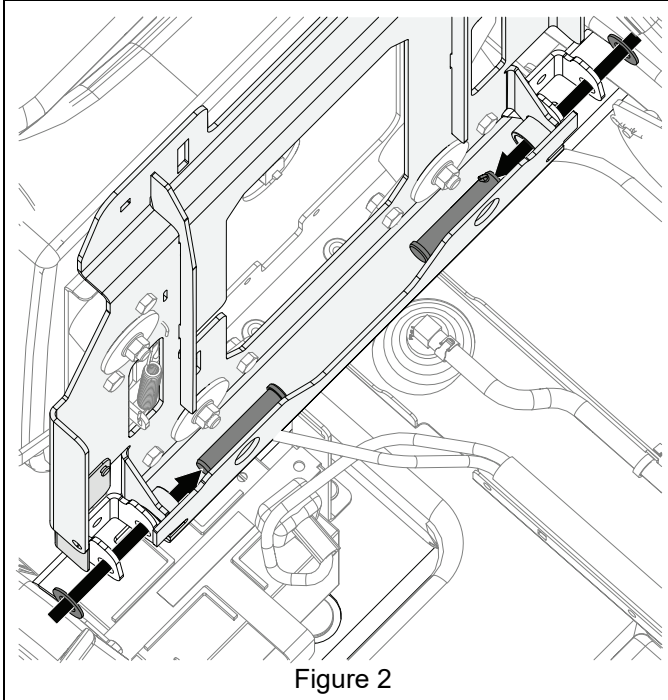
Check the contents of your kit for the parts listed below. Also see Figure 1.

Item	Description	Qty	AriensCo P/N
1	Seat Plate Assembly * (Preassembled with items 2, 16, 17)	1	05255751
2	Flange Bushing *	2	05500901
3	Ultra-Low Suspension With Slides	1	09380900
4	5/16"-18 x 1 1/2" Button Socket Head Cap Screw	4	05901727
5	5/16"-18 Nylon Flange Nut	4	06500809
6	Suspension Seat Latch	1	05255851
7	1/2" Polyliner Split Bushing	2	05500026
8	1/2" External Retaining Ring	2	05710200
9	Rod Keeper Bracket	1	05255951
10	1/4"-20 x 3/8" Hex Head Tapping Screw	1	07400125
11	Extension Spring	1	08321100
12	5/16"-18 x 3 3/8" Coupler Nut	2	06553300
13	Rubber Bumper	2	07533600
14	Harness Extension	1	09383900
15	Cable Tie	2	07517300
16	Seat Plate Guard *	1	05108451
17	3/16" x 1/4" Rivet *	2	06800120
* Preassembled			



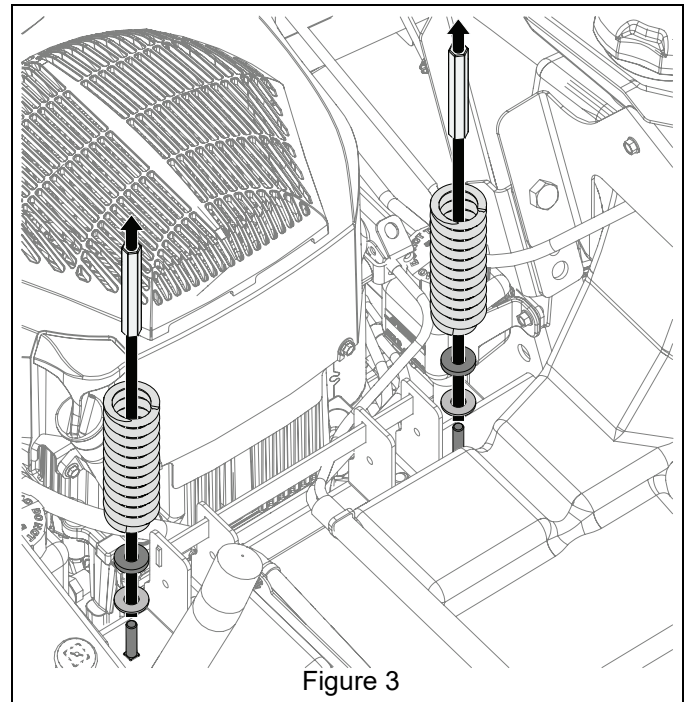
REMOVAL

1. Stop engine, remove key and engage parking brake. Wait for moving parts to stop and for hot parts to cool.
2. Tilt seat forward and disconnect seat switch harness from seat switch.
3. Remove and retain two slic pins and flat washers attaching seat plate to mower and remove seat assembly. See Figure 2.

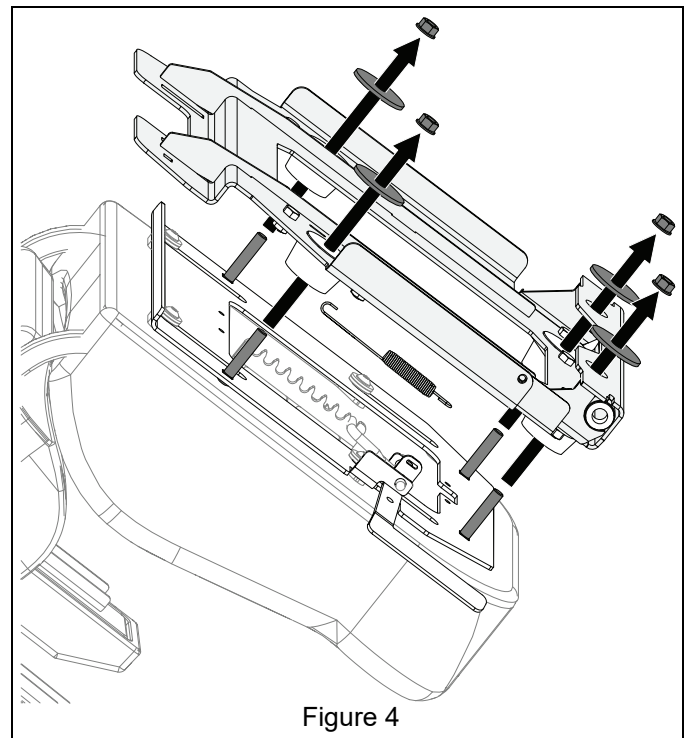


4. Place seat assembly seat-side down on clean cardboard or shop towels to avoid damaging seat material.

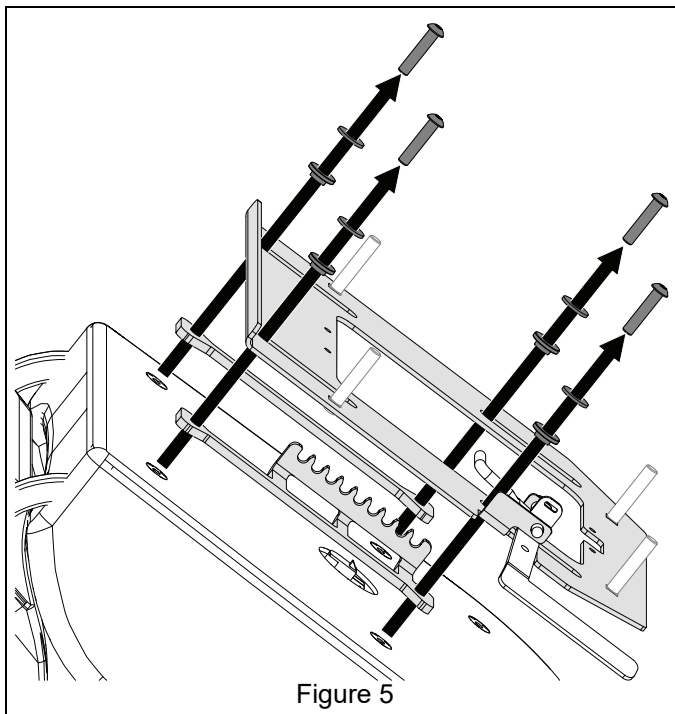
5. Remove and retain two 5/16" bolts securing coupling nuts, compression springs and flat washers. Dispose of coupling nuts, compression springs and washers. See Figure 3.



6. Remove seat adjuster spring.
7. Remove and discard four flange nuts and flat washers securing isolation seat plate assembly and remove and discard plate assembly. See Figure 4.

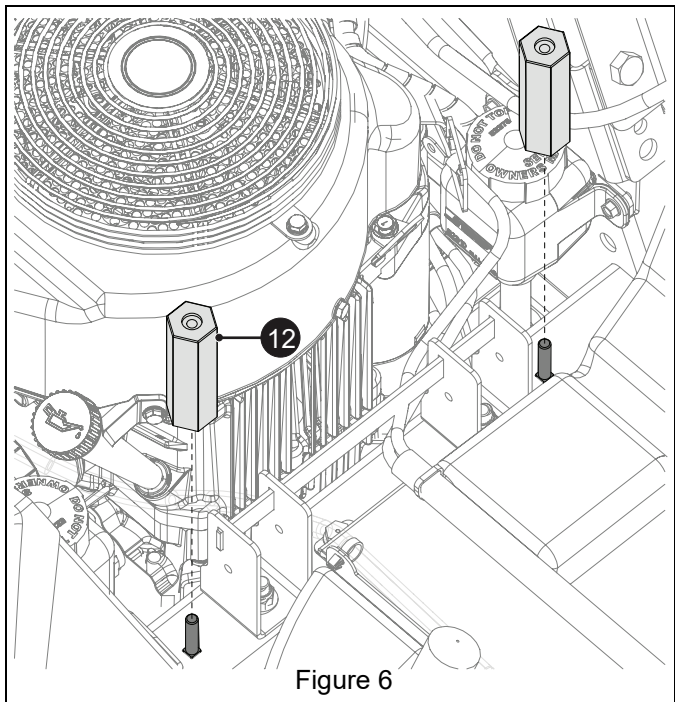


8. Remove and discard four socket head cap screw bolts, flat washers and flange bushings securing seat mounting plate and slides and remove and discard seat mounting plate and slides. Retain seat. See Figure 5.

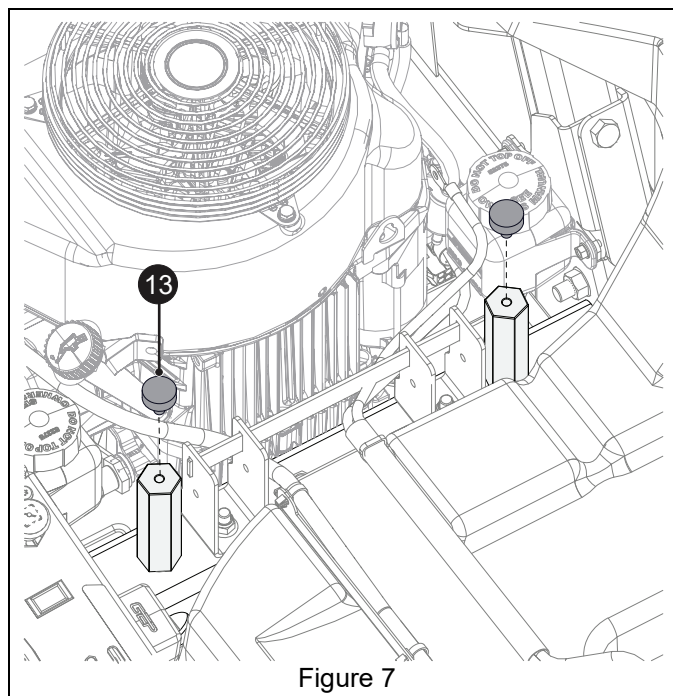


INSTALLATION

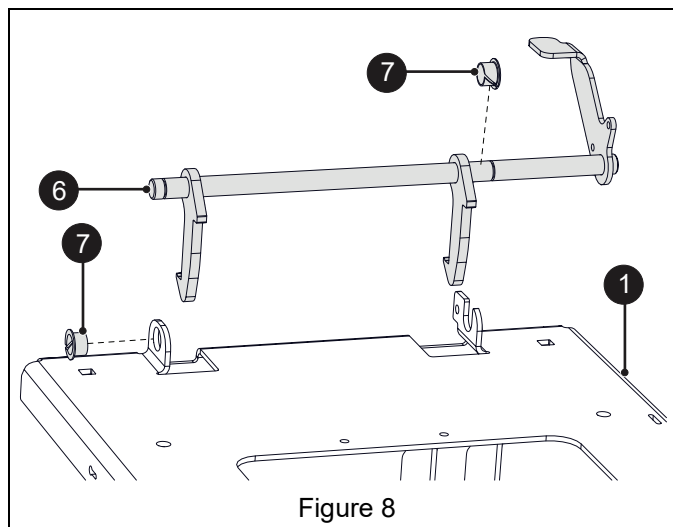
1. Attach two coupler nuts (item 12) using round head square neck bolts removed earlier. The recessed ends of the nuts face bolts. See Figure 6.



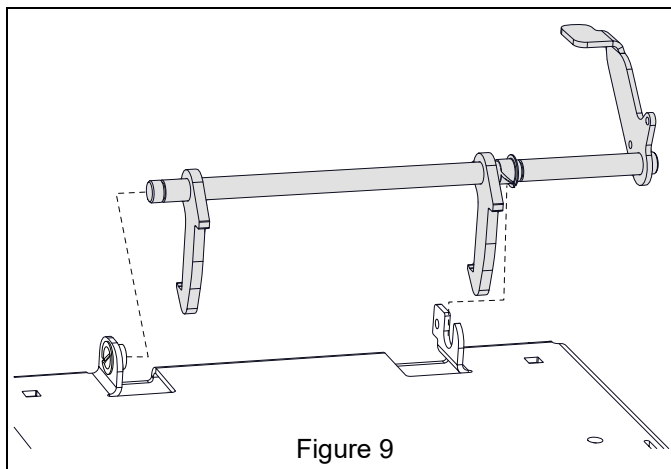
2. Install two rubber bumpers (item 13) on coupling nuts. Fully tighten bumpers. See Figure 7.



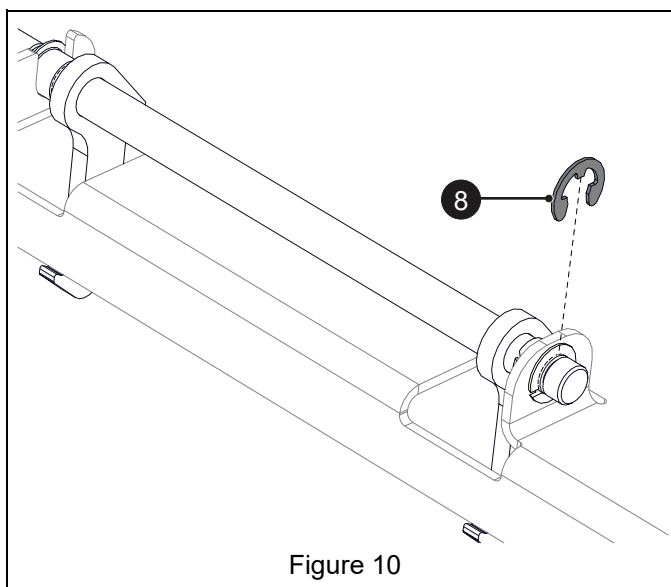
3. Install one split bushing (item 7) on seat latch (item 6). Install second split bushing (item 7) on seat plate assembly (item 1). Install bushings with the flanges facing outward. See Figure 8.



4. Install seat latch into seat plate assembly. Ensure that bushing flange on latch is positioned on the outside of the seat bracket. See Figure 9.

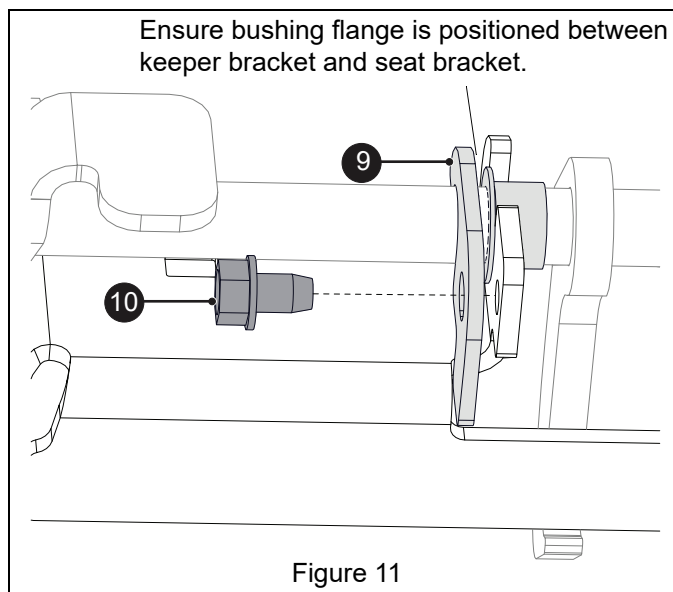


5. Install one retaining ring (item 8) on seat latch end away from handle. See Figure 10.

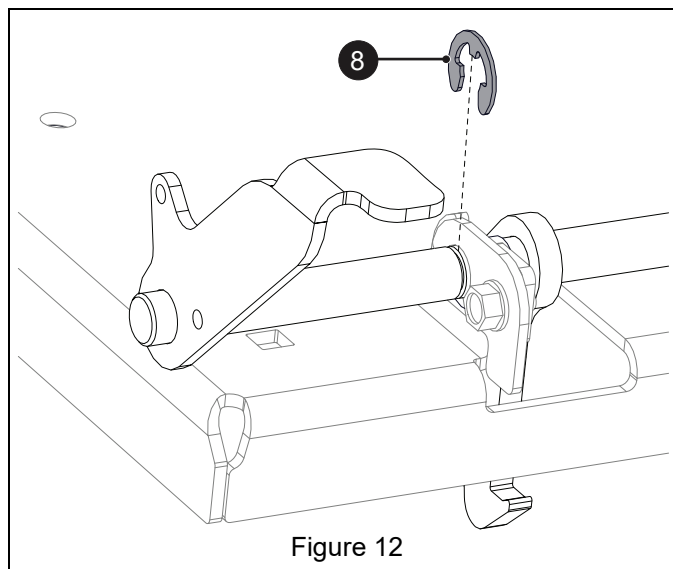


6. Install rod keeper bracket (item 9) on seat bracket and retain with one 1/4" x 3/8" tapping screw (item 10). See Figure 11.

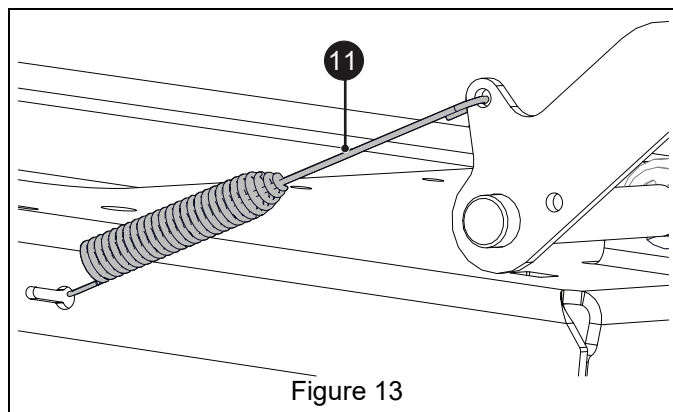
IMPORTANT: Ensure that the split bushing flange is positioned between the keeper bracket and the seat bracket.



7. Install second retaining ring (item 8) on seat latch next to keeper plate. See Figure 12.



8. Install extension spring (item 11) on seat latch and connect to keyhole slot in seat plate. See Figure 13.



See Figure 14.

9. Attach harness extension (item 14) to seat switch.
10. Route harness through round hole in suspension assembly (item 3) and position suspension assembly onto seat. Retain with four 5/16" x 1 1/2" button socket head cap screws (item 4).

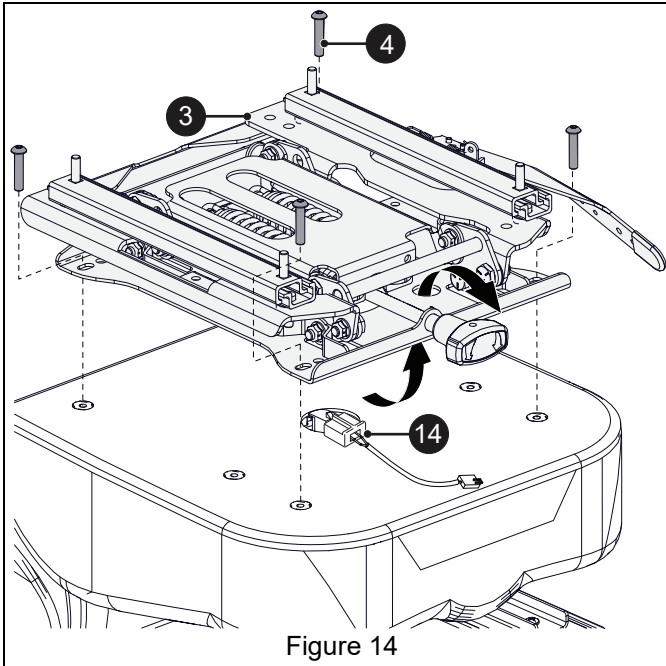


Figure 14

11. Position seat plate assembly onto suspension assembly and retain with four 5/16" nylon flange nuts (item 5). See Figure 15.

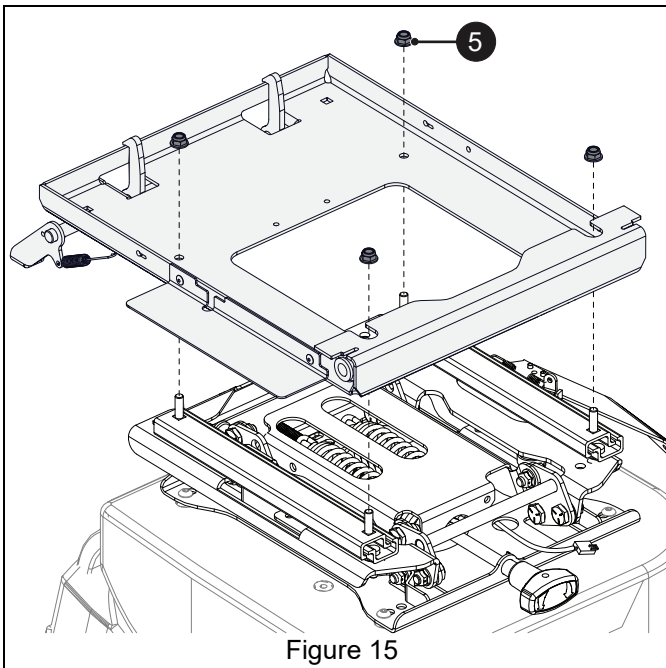


Figure 15

12. Position seat assembly on unit and secure with two slic pins and flat washers removed earlier. See Figure 16.

IMPORTANT: Slic pins **MUST** be installed from inside facing out with flat washers on the outside.

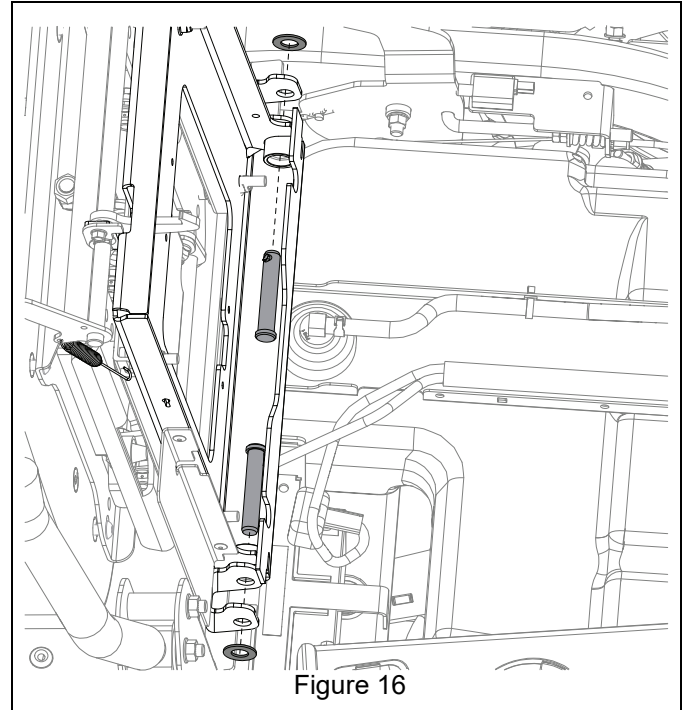


Figure 16

13. Connect seat switch to harness extension and secure harness with two cable ties (item 15). See Figure 17.

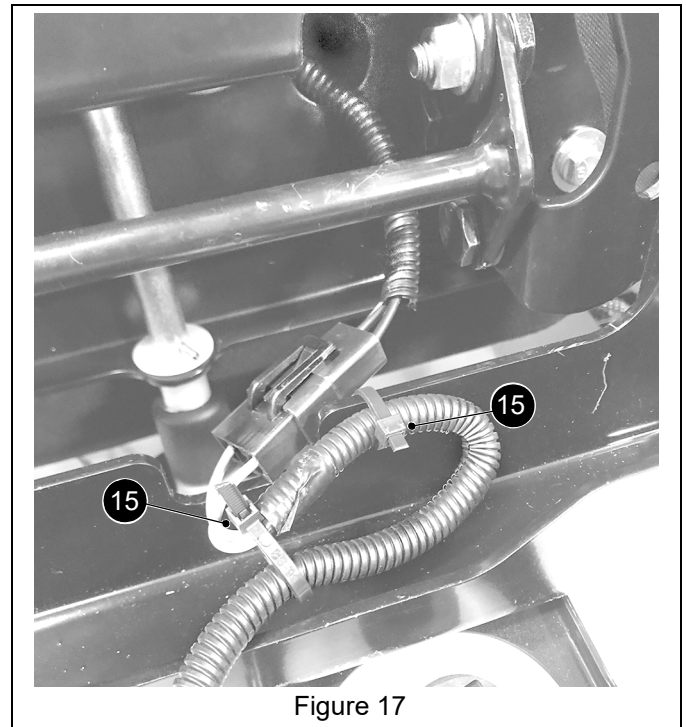


Figure 17

14. Return seat to operating position.
15. Ensure that seat latch forks fully engage in the seat receiver.